

AUTOMATED CURBSIDE CART COLLECTION GUIDE

NEW AUTOMATED CART COLLECTION
PROGRAM BEGINS **AUGUST 2025**

Wait until your
first collection day
in **August 2025**
to use your new
carts.



New In 2025! Automated Collection Program

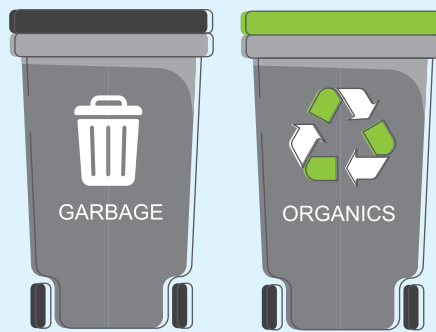
Single-detached and non-strata townhomes in Langley City will receive two wheeled carts — one for garbage and one for organics.



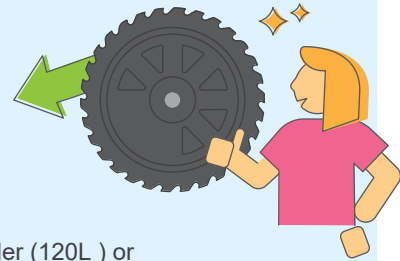
Garbage collection will continue to be collected biweekly (every other week).
Organics collection will continue to be collected weekly.

There are three cart sizes: 120 L, 240 L, and 360 L

All single-detached and non-strata family homes will receive the **default 240 L** size garbage and organics cart.



The carts have large, sturdy wheels and a stable base, making them easy to move on pavement, gravel, grass and even snow.



If you need to exchange your cart for a smaller (120L) or bigger (360 L) size, email col@emterra.ca or call **604.635.0999**. Additional fees may apply.



All garbage and organics must be placed inside the correct cart. On collection day, the lids must be completely closed. If carts are overflowing or have materials placed on top of the lids, they will not be collected.

All carts are equipped with a Radio Frequency Identification (RFID) tag and a unique serial number linked to the assigned property. All collection trucks are equipped with a RFID reader and an onboard computer to track collection for each household and monitor for contamination.

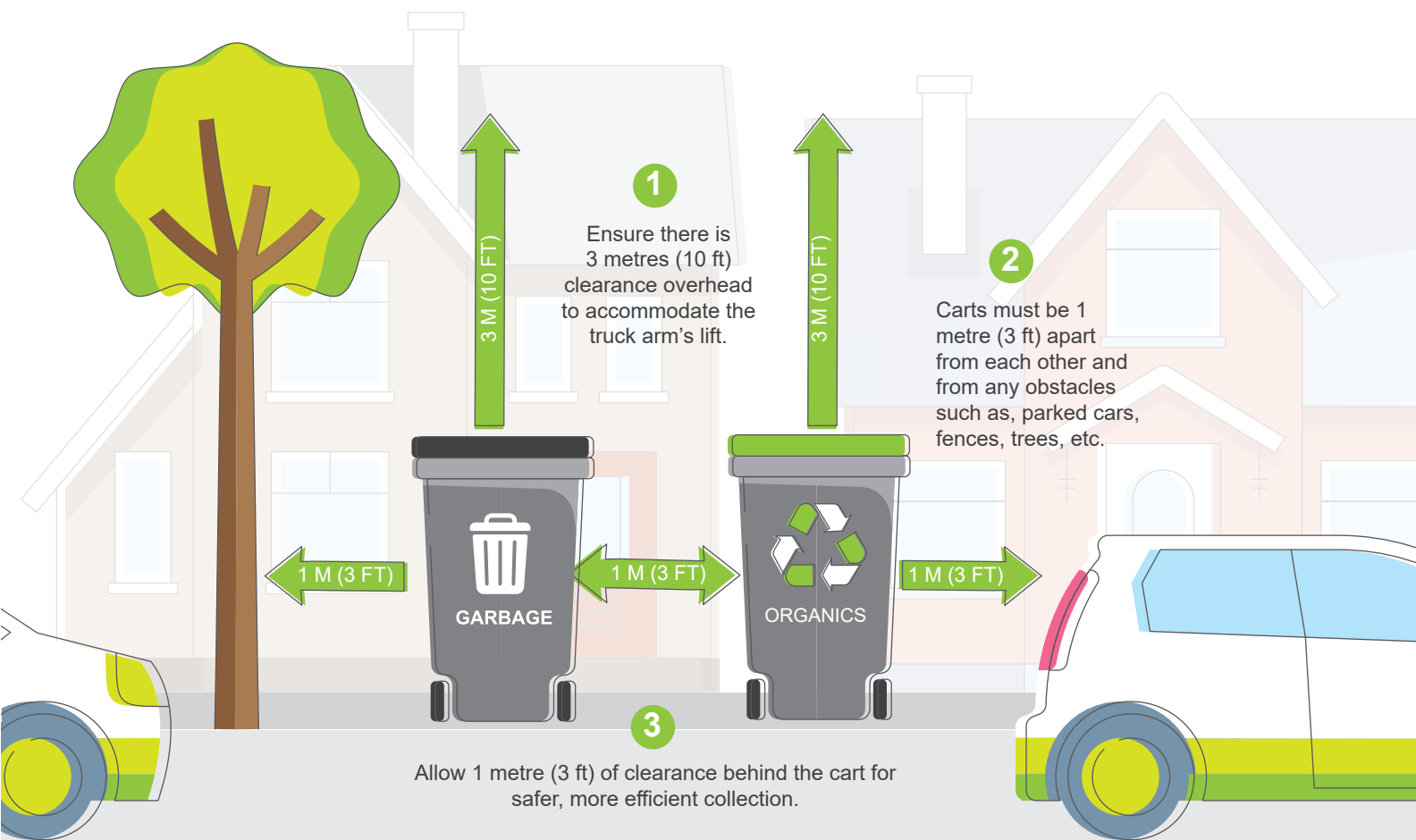
Only carts provided by the City are compatible with the new automated curbside collection service trucks.

The carts can be stored where you currently keep your garbage, recycling and organics bins – in the garage, backyard, outdoor storage unit, side of your home or front yard – as long as it's within your property boundary. The carts cannot be stored on a road or sidewalk.

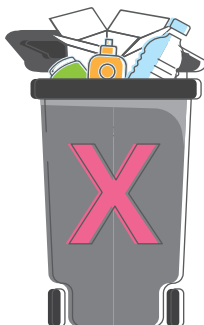
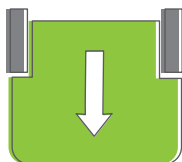
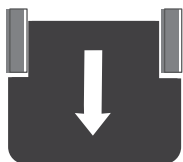


If you wish to change your cart size, email col@emterra.ca or call 604.635.0999.

Setting Out The Carts For Collection



Place the **new wheeled carts** out for collection on your **first collection day on or after August 1, 2025.**



4 Point the arrows on the cart lids towards the street with handles towards your house.

5 Ensure lids can fully close and waste is not packed too tightly in the cart.

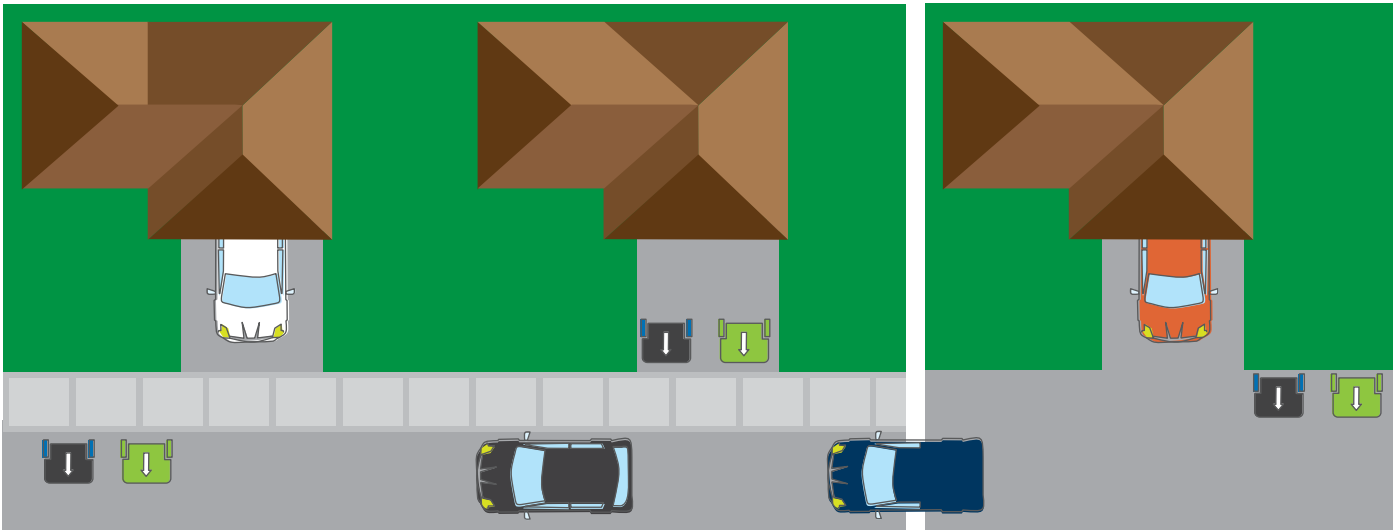
6 Carts must not obstruct sidewalks, bike lanes or the flow of traffic.



Set carts out for collection by 7:30 AM on your collection day.
Please do not place carts out the night before collection.

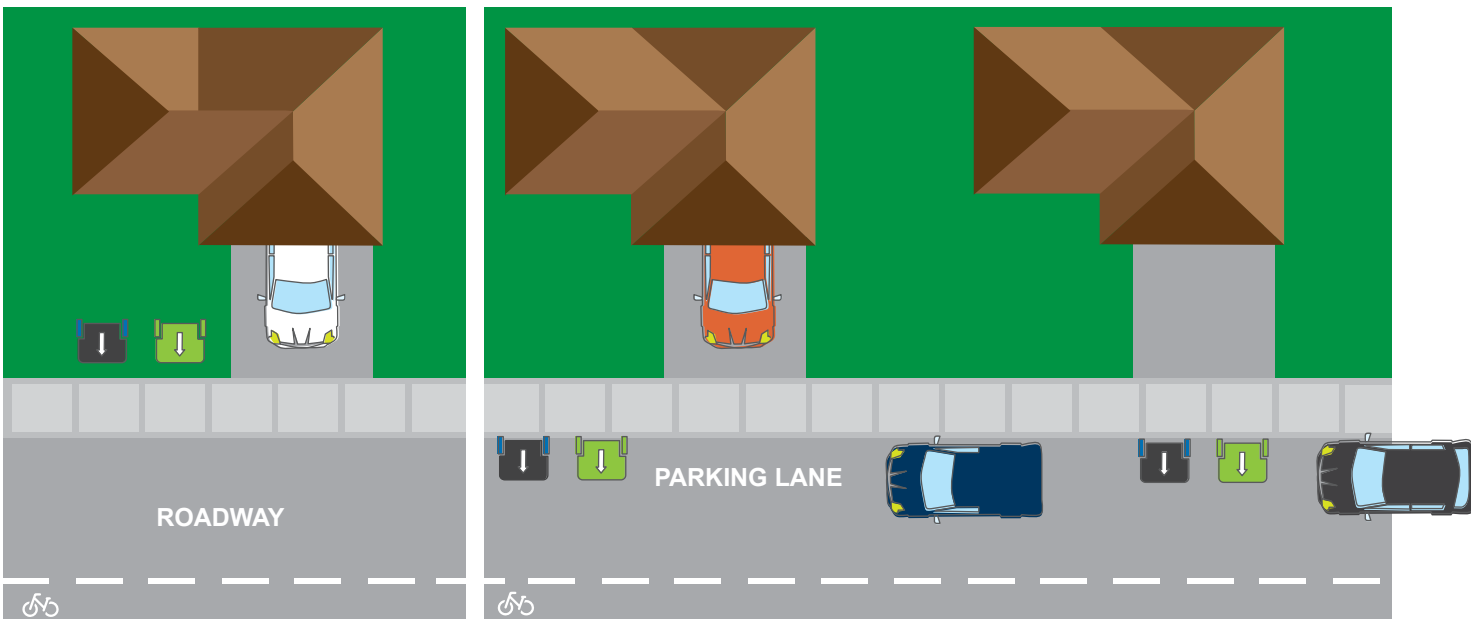
Setting Out The Carts For Collection

Street Collection **with no marked bike lanes**



- Place carts on the street with wheels against the curb.
- For steep-sloped driveways, set carts out on the street against the curb.
- Alternatively, if obstructed by parked cars, carts can be placed on the driveway if within 3.5 m (12 ft) of the roadway.

Street Collection **with bike lanes & parking lanes**



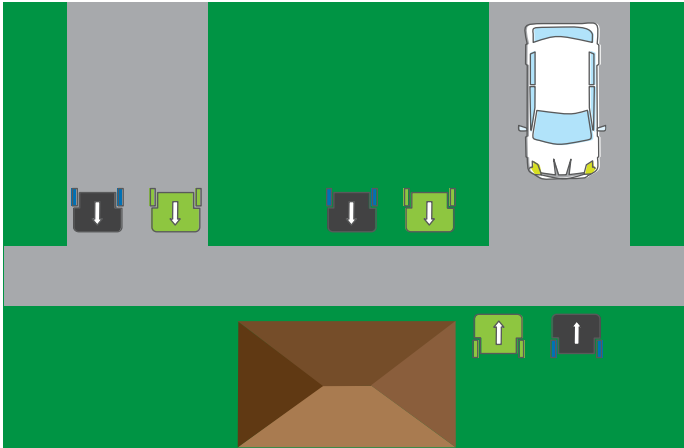
- In areas with no parking lane, carts should be placed behind the sidewalk.
- In areas with a parking lane, carts should be placed in the parking lane for collection.
- Alternatively, if obstructed by parked cars, carts can be placed on the driveway if within 3.5 m (12 ft) of the roadway.
- Place carts on the property receiving collection in a less sloped area away from obstacles like fences and parked cars.
- Truck arm has a reach of 3.5 meters (12 ft).



If you are unsure of where to place your cart for collection, please
email col@emterra.ca or call 604.635.0999.

Setting Out The Carts For Collection

Laneway Collection



- Set carts on a less sloped area within reach of the truck arm.
- Narrow laneways where space is limited, ensure your cart is as close to the lane as possible.

Cul-de-sacs



- Cul-de-sacs can be challenging for collection due to limited space.
- Park vehicles inside the garage or in the driveway on collection day, and move other obstacles like basketball hoops and hockey nets off the street at least 1-metre away from where the carts are placed.

Snow Event



- When shovelling, clear a flat spot adjacent to the end of your driveway for your carts.
- Alternatively, carts can be placed on a cleared driveway if within 3.5 m (12 ft) of the roadway.
- Don't place carts behind or on top of snowbanks.
- Inclement weather or poor road conditions may result in the cancellation of collection services



If you are unsure of where to place your cart for collection, please **email col@emterra.ca or call 604.635.0999.**

Never forget a collection day.
Get reminders by email, text, or call.

Cart Tips



Garbage Cart:

- ✓ Items can be placed bagged or loose in the cart.
- ✓ Please bag any personal hygiene waste.
- ✓ Ensure lids are fully closed.



TIPS:

- Put food and yard waste into your organics cart.
- Avoid single-use items.
- Donate usable goods.



Organics Cart:

- ✓ Please put out your materials every week even if it's a small amount.
- ✓ Put both food and yard waste in the organics cart.
- ✓ If you choose to line your organics cart, use paper such as a yard waste bag, newspaper, or soiled pizza box. (Compostable and biodegradable plastics are not accepted).
- ✓ Make food waste less wet by straining out liquids from soups or sauces before placing them in the cart.
- ✓ Wrap wet food waste in paper to stop it from sticking to the cart.
- ✓ Pre-freeze food waste before placing it in the cart to reduce odor
- ✓ Keep the lid closed to avoid wildlife interactions.
- ✓ During warm weather, consider storing in a garage, shed or shady area to help reduce odour.



Recycling service will remain unchanged with Recycle BC. For more details on what can be recycled and more, visit recyclebc.ca.



Not sure what's allowed in each cart? Learn more at LangleyCity.ca/Waste

Important Information About The Carts

Resident's Responsibility

- ✓ Use Langley City issued carts for curbside collection.
- ✓ Properly place carts for collection.
- ✓ Keep carts clean and secure.
- ✓ Write your address on carts in the white square.
- ✓ Carts stay with the property even if you move.
- ✓ If the cart is damaged or misplaced, call, or email for replacement options: 604.635.0999 | col@emterra.ca



Old Collection Containers

Your existing garbage, recycling and/or organics container belong to you. There are a number of creative and environmentally friendly ways to repurpose these containers and keep them out of the landfill, such as:

- ✓ Storage for tools, potting soil, mulch, yard waste and animal feed
- ✓ Rain barrels
- ✓ DIY vegetable planter
- ✓ Collect your depot items (I.e. Flexible plastics, glass, foam packaging or refundables)



Langley City is currently exploring options for a community exchange program of old containers. More information will be available at [LangleyCity.ca](https://www.langleycity.ca)



This new collection program will help ensure waste is **managed efficiently**, creating the **least negative impact** on the **environment** and supporting our **valued landfill space** by encouraging garbage separation. The new automated collection system will be **safer** and **reduce service failures** throughout the year. By rethinking curbside collection, we can all do our part to keep garbage and organics out of the region's landfill.

Waste placed in the new collection carts
prior to August 2025 will not be collected.



For more information, visit LangleyCity.ca/Carts