

© Copyright reserved. This drawing and design is the property of PMG Landscape Architects and may not be reproduced or used for other projects without their permission.

pmg
LANDSCAPE ARCHITECTS

Suite C100 - 4185 Still Creek Drive
Burnaby, British Columbia, V5C 6G9
p. 604 294-0011 ; f. 604 294-0022

SEAL:



NO.	DATE	REVISION DESCRIPTION	DR.
4	26.OCT.23	NEW SITE PLAN	RI
3	26.SEP.23	UPDATE PL	RI
2	26.AUG.23	ISSUED FOR DP	RI
1	24.AUG.23	CITY COMMENTS	RI
2	24.AUG.23	NEW SITE PLAN	RI
1	24.AUG.23	PER CLIENT REQUIREMENTS	RI

NO. DATE REVISION DESCRIPTION DR.

CLIENT:

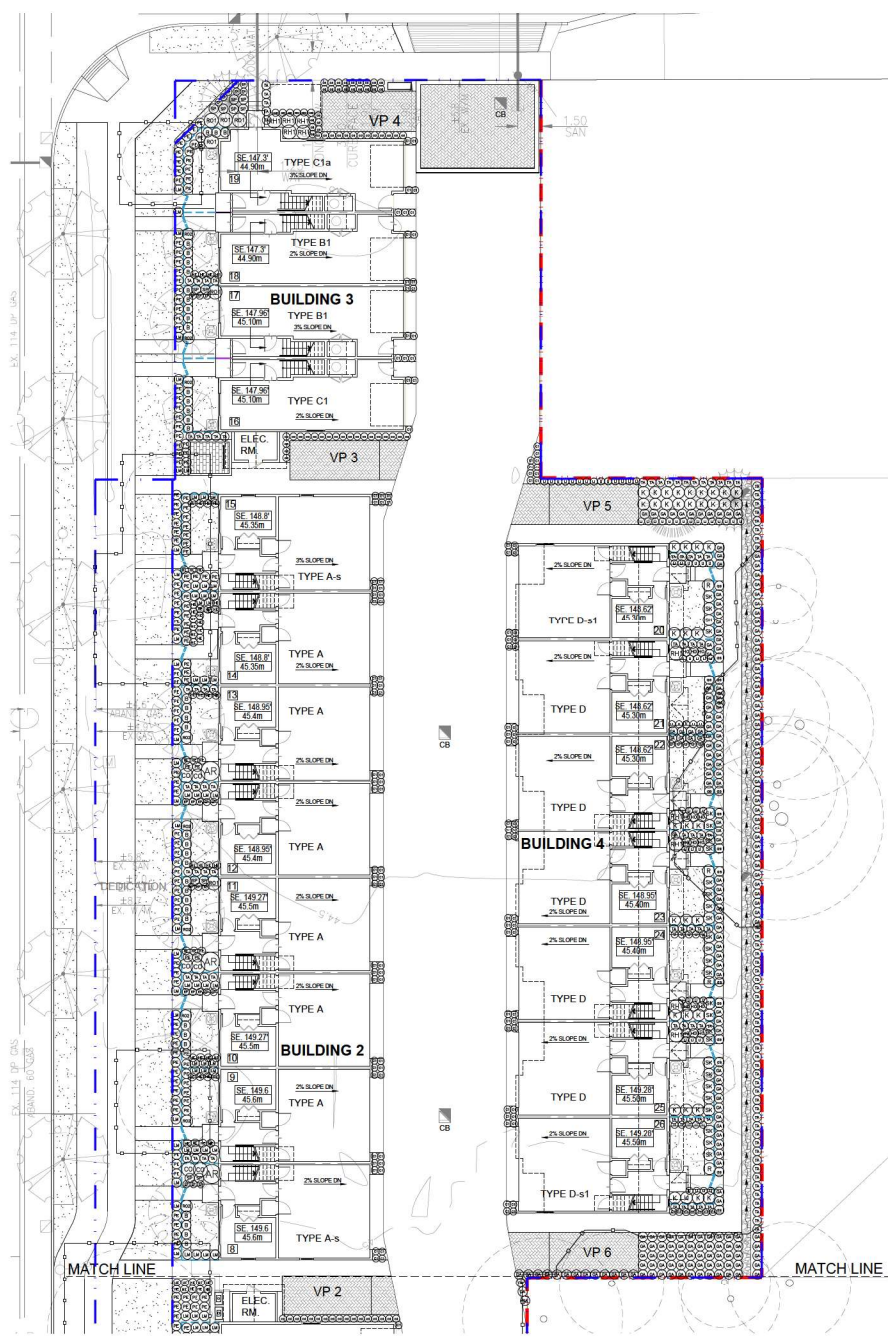
PROJECT:
26 UNIT TOWNHOUSE DEVELOPMENT
4560, 4570, 4580 208 STREET & 20815 45A AVENUE
CITY OF LANGLEY, BC

DRAWING TITLE:
SHRUB PLAN

DATE: 24.MAY.23 DRAWING NUMBER:
SCALE: 1:50
DRAWN: RI
DESIGN: RI
CHKD: YR

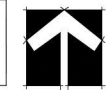
L2
OF 5

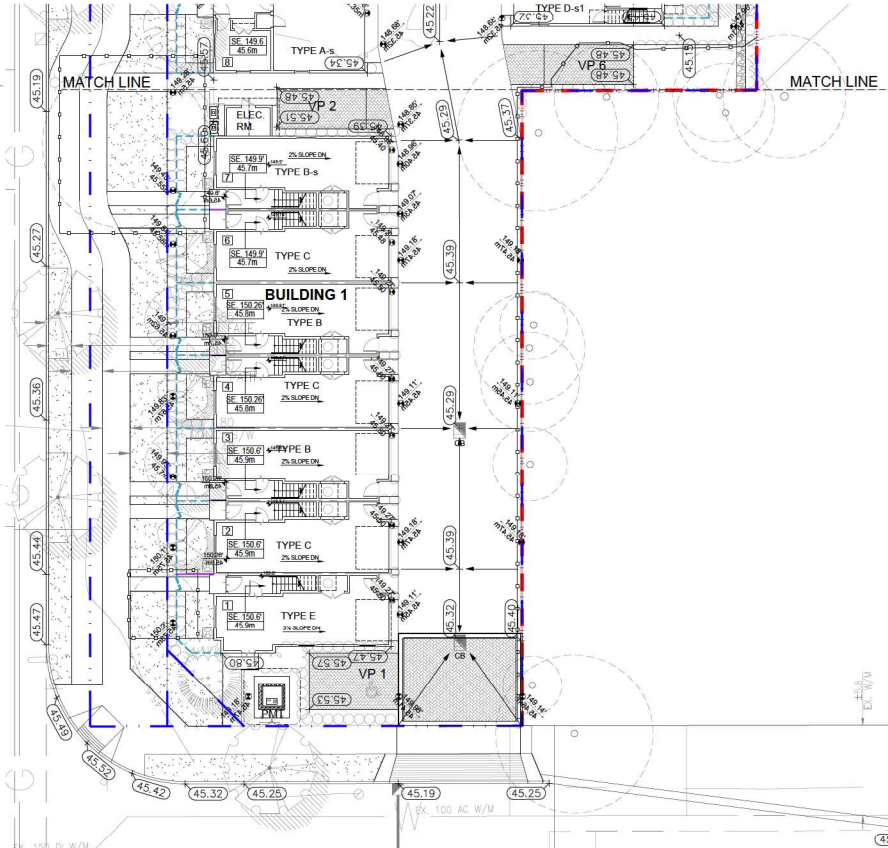
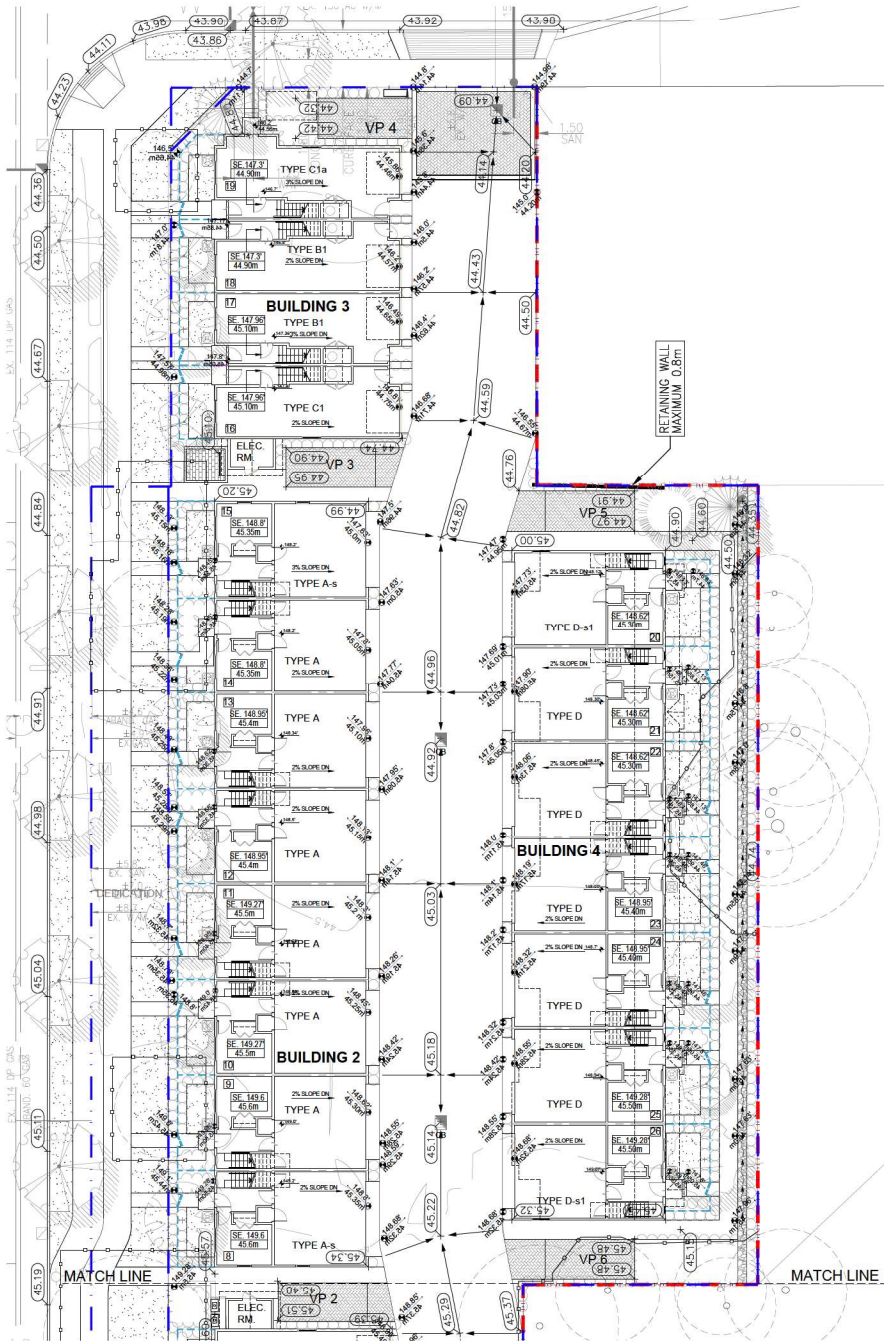
24069-3.2P PMG PROJECT NUMBER: 24-069



PLANT SCHEDULE			PMG PROJECT NUMBER: 24-069	
KEY	QTY	BOTANICAL NAME	COMMON NAME	PLANTED SIZE / REMARKS
SHRUB	3	ARBUTUS UNEDO 'COMPACTA'	COMPACT STRAWBERRY BUSH	#3 POT, 80CM
	63	BUXUS MICROPHYLLA 'WINTER GEM'	LITTLE-LEAF BOX	#2 POT, 40CM
	8	CORNUS SERICEA	REDTWIG DOGWOOD	#2 POT, 80CM
	41	KALMIA LATIFOLIA 'ELF'	DWARF MOUNTAIN LAUREL	#3 POT, 50CM
	4	RHODODENDRON 'SON BELLS'	RHODODENDRON	#2 POT, 50CM
	10	RHODODENDRON 'P.J.M.'	RHODODENDRON, LIGHT PURPLE; E. MAY	#2 POT, 50CM
	10	ROSA MIDLAND 'BONICA'	BONICA ROSE	#2 POT, 40CM
	16	ROSA MIDLAND 'REB'	MIDLAND ROSE, RED	#2 POT, 40CM
	28	SKIMMIA JAPONICA (90% MALE)	JAPANESE SKIMMIA	#2 POT, 30CM
	21	SPIRAEA JAPONICA 'LITTLE PRINCESS'	LITTLE PRINCESS SPIRAEA; PINK	#2 POT, 40CM
	149	TAXUS X MEDIA 'YULE'	HILLSIDE YEW	1.0M BALL
GRASS	176	CAREX FLAGELLIFERA 'KOW'	KOW WEEPING SEDGE	#1 POT
	81	CAREX OPHIENSIS 'EVERGOLD'	EVERGOLD JAPANESE SEDGE	#1 POT
	202	PENNISETUM ALOPECUROIDES 'HAMELIN'	DWARF FOUNTAIN GRASS	#1 POT
PERENNIAL	15	ASTILBE 'ARENDSIS 'RED SENTINEL'	FALSE SPIREAE, RED	#1 POT
	33	ECHINACEA PURPUREA	PURPLE CONEFLOWER	15CM POT
	81	HEMEROCALLIS 'WHITE TEMPTATION'	DAYLILY, WHITE	#1 POT, 20CM
	15	HOSTA 'PATRIOT'	HOSTA, GREEN AND WHITE VARIEGATED	#1 POT, 1 EYE
	76	LAUENGLIA ANGUSTIFOLIA 'MUNSTEAD'	ENGLISH LAVENDER, COMPACT; VIOLET-BLUE	#1 POT
	78	LIRIOPE MUSCARI	BLUE LILY-TURF	#1 POT
	201	GAULTHERIA SHALLON	SALAL	#1 POT, 20CM

NOTES: * PLANT SIZES IN THIS LIST ARE SPECIFIED ACCORDING TO THE BC LANDSCAPE STANDARD AND CANADIAN LANDSCAPE STANDARD, LATEST EDITION. CONTAINER SIZES SPECIFIED AS PER ON-SITE STANDARD. BOTH PLANT SIZE AND CONTAINER SIZE ARE THE MINIMUM ACCEPTABLE SIZES. * REFER TO SPECIFICATIONS FOR DEFINED CONTAINER MEASUREMENTS AND OTHER PLANT MATERIAL REQUIREMENTS. * SEARCH AND REVIEW: MAKE PLANT MATERIAL AVAILABLE FOR OPTIONAL REVIEW BY LANDSCAPE ARCHITECT AT SOURCE OF SUPPLY. AREA OF SEARCH TO INCLUDE LOWER MAINLAND AND FRAZER VALLEY. * SUBSTITUTIONS: OBTAIN WRITTEN APPROVAL FROM THE LANDSCAPE ARCHITECT PRIOR TO MAKING ANY SUBSTITUTIONS TO THE SPECIFIED MATERIAL. UNAPPROVED SUBSTITUTIONS WILL BE REJECTED. ALLOW A MINIMUM OF FIVE DAYS PRIOR TO DELIVERY FOR REQUEST TO SUBSTITUTE. SUBSTITUTIONS ARE SUBJECT TO BC LANDSCAPE STANDARD AND CANADIAN LANDSCAPE STANDARD. DEFINITION OF CONDITIONS OF AVAILABILITY. * ALL LANDSCAPE MATERIAL AND WORKMANSHIP MUST MEET OR EXCEED BC LANDSCAPE STANDARD AND CANADIAN LANDSCAPE STANDARD, LATEST EDITION. * ALL PLANT MATERIAL MUST BE PROVIDED FROM CERTIFIED DISEASE FREE NURSERY. * BIO-SOLIDS NOT PERMITTED IN GROWING MEDIUM UNLESS AUTHORIZED BY LANDSCAPE ARCHITECT.





© Copyright reserved. This drawing and design is the property of PMG Landscape Architects and may not be reproduced or used for other projects without their permission.

pmg
LANDSCAPE ARCHITECTS

Suite C100 - 4185 Still Creek Drive
Burnaby, British Columbia, V5C 6G9
p. 604 294-0011 ; f. 604 294-0022

SCALE:



NO.	DATE	REVISION DESCRIPTION	DR.
4	26.OCT.23	NEW SITE PLAN	RI
3	26.SEP.23	UPDATE PL	RI
4	26.AUG.23	ISSUED FOR DP	RI
3	24.JUL.23	CITY COMMENTS	RI
2	24.JUN.23	NEW SITE PLAN	RI
1	24.JUN.23	PER CLIENT REQUIREMENTS	RI

CLIENT:

PROJECT:

26 UNIT TOWNHOUSE DEVELOPMENT

4560, 4570, 4580 208 STREET
& 20815 45A AVENUE
CITY OF LANGLEY, BC

DRAWING TITLE:

GRADING PLAN

DATE: 24.MAY.23 DRAWING NUMBER:

SCALE: 1:150

DRAWN: RI

DESIGN: RI

CHKD: YR

L4

OF 5





SCALE:

NO.	DATE	REVISION DESCRIPTION	DR.
4	28.OCT.15	NEW SITE PLAN	RU
5	28.SEP.15	UPDATE PL	RU
6	28.AUG.15	ISSUED FOR DP	RU
3	24.JUN.15	CITY COMMENTS	RU
2	24.JUN.15	NEW SITE PLAN	RU/RS
1	24.JUN.15	PER CLIENT REQUIREMENTS	RS

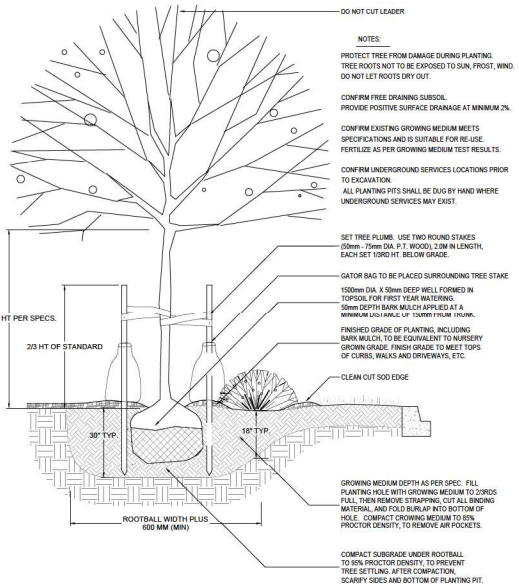
NO. DATE REVISION DESCRIPTION DR.

CLIENT:

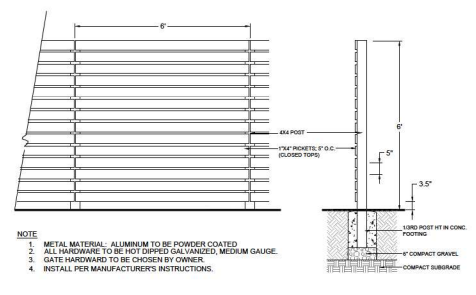
PROJECT:
26 UNIT TOWNHOUSE DEVELOPMENT
4560, 4570, 4580 208 STREET
& 20815 45A AVENUE
CITY OF LANGLEY, BC

DRAWING TITLE:
LANDSCAPE DETAILS

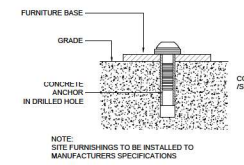
DATE: 24.MAY.25 DRAWING NUMBER:
SCALE: AS SHOWN **L5**
DRAWN: RU
DESIGN: RU
CHKD: YR **OF 5**



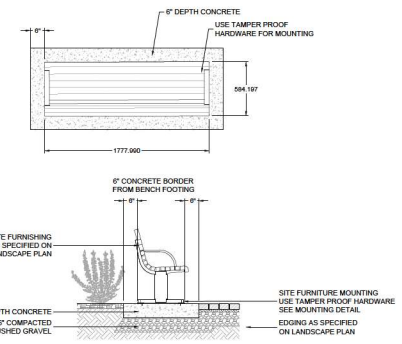
1 TREE AND SHRUB PLANTING AT GRADE
1:25



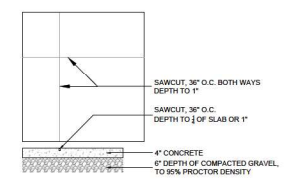
3 1.8M HT. ALUMINUM FENCE
1:25



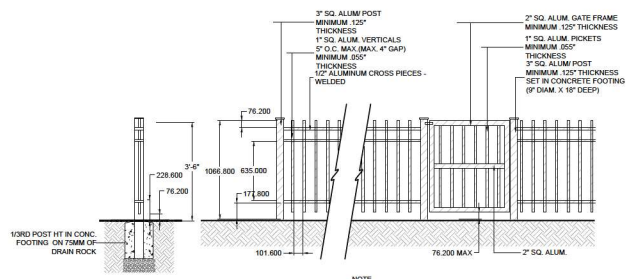
4 SITE FURNITURE MOUNTING
N.T.S.



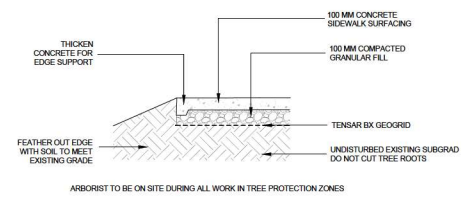
6 BENCH ON CONCRETE PAD
1:25



7 CONCRETE SAW CUTS
1:25



2 1.06M HT. ALUMINUM PICKET FENCE
1:25



8 PAVING OVER TREE ROOTS
1:12