

# WHITETAIL 56TH APARTMENTS, 20719, 20721 & 20729, 20731 EASTLEIGH CRESCENT, LANGLEY, B.C.



**KEYSTONE**  
ARCHITECTURE

ABBOTSFORD BC | 300 - 33131 SOUTH FRASER WAY  
V2S 2B1 | 604.850.0577  
CALGARY AB | 410 - 333 11TH AVENUE SW  
T2R 1L9 | 587.391.4768  
MAIL@KEYSTONEARCH.CA  
LANDSCAPE ARCHITECTURE DIVISION



RE-ISSUED FOR  
DEVELOPMENT  
PERMIT

NO.	ISSUE/REVISION	DATE
1	ISSUED FOR LP	23-12-08
2	RE-ISSUED FOR DP	24-03-13

## WHITETAIL 56TH APARTMENTS

20719, 20721 & 20729, 20731  
EASTLEIGH CRESCENT,  
LANGLEY, B.C.

PROJECT # 23-142  
CITY FILE #



COVER SHEET



**KEYSTONE**  
ARCHITECTURE

### WHITETAIL HOMES

T 604.864.0714 | 304 - 3550 MT. LEHMAN RD  
ABBOTSFORD, BC V4X 2M9

### KEYSTONE ARCHITECTURE & PLANNING LTD.

T 604.850.0577 | 300 - 33131 SOUTH FRASER WAY  
F 1.855.398.4578 | ABBOTSFORD, BC V2S 2B1  
T 587.391.4768 | 410 - 333 11TH AVENUE SW,  
CALGARY, AB T2R 1L9

E-MAIL: MAIL@KEYSTONEARCH.CA  
WEBSITE: KEYSTONEARCH.CA

### LANDSCAPE ARCHITECTURE DIVISION

T 604.850.0577 EXT. 216 | 300 - 33131 SOUTH FRASER WAY  
ABBOTSFORD, BC V2S 2B1

E-MAIL: JENNIFER@KEYSTONEARCH.CA

### SHEET INDEX

Sheet Number	Sheet Title
L-0.00	COVER SHEET
L-1.00	SITE PLAN
L-1.10	PODIUM PLAN
L-1.20	PLANTING PLANS

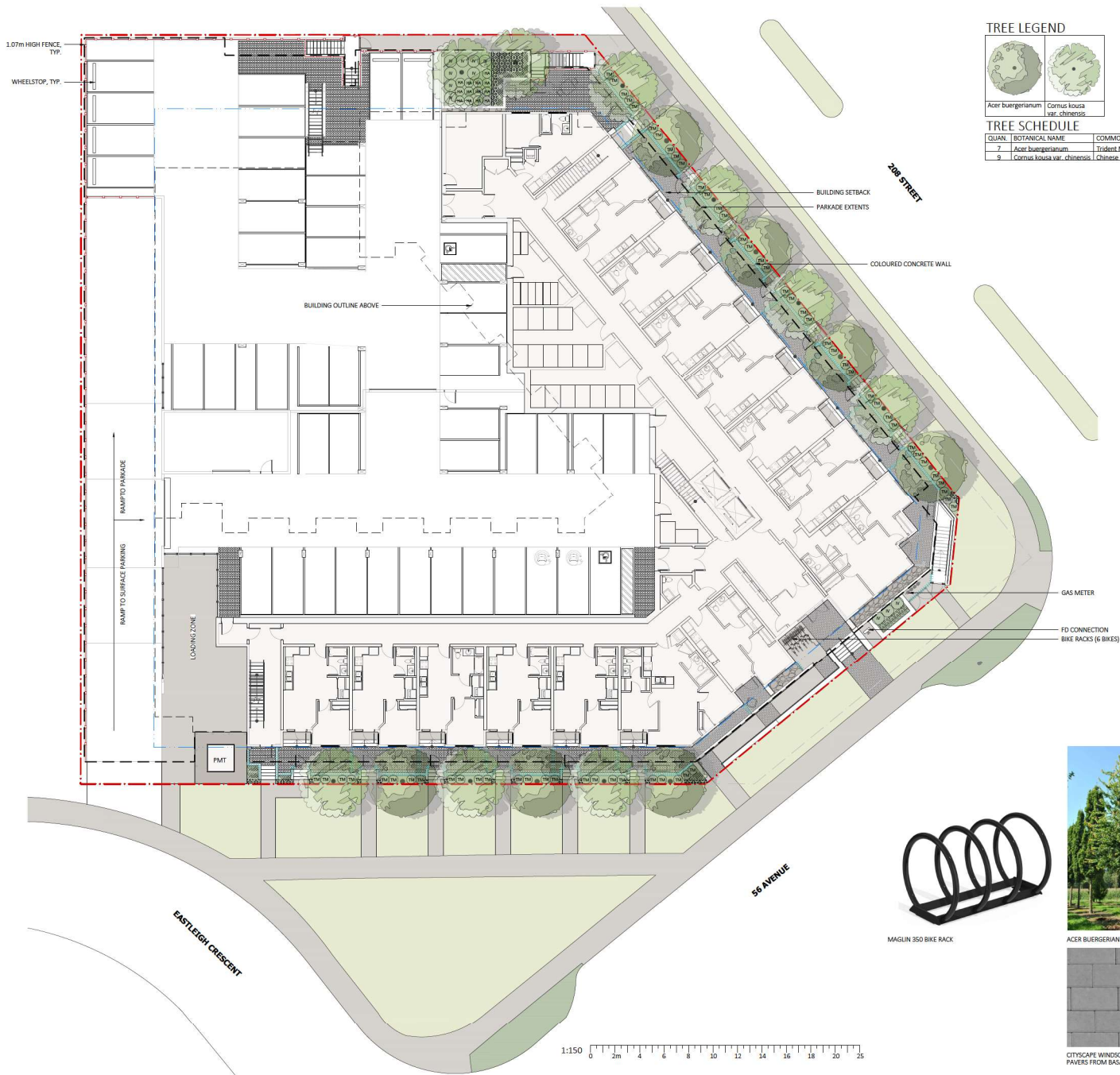
### DESIGN RATIONALE

WHITETAIL APARTMENTS ON EASTLEIGH AND 56 AVENUE WILL PROVIDE A DELIGHTFUL PRESENCE TO THE CORNER WITH BOLD EARTH TONES LIGHTING UP THE BUILDING, WHICH IS SOFTENED WITH THE NATURAL GREEN TONED HEDGE THAT CONSISTENTLY GRAZES THE FRONT PATIOS. THE PROPERTY LINE IS SET QUITE A WAYS BACK FROM THE ROAD INTERFACES ALLOWING FOR LARGE EXPANSES OF OPEN LAWN AND STRONG GROUND-FLOOR UNIT CONNECTIONS TO THE PUBLIC SIDEWALK. A STRONG DECIDUOUS TREE CANOPY HAS BEEN PROPOSED ON-SITE ALONG BOTH THE SOUTH AND EAST SIDES, WHICH WILL DECREASE THE AMBIENT TEMPERATURE IN THE SUMMER MONTHS ON THE PRIVATE PATIOS AND ALLOW LIGHT TO PENETRATE THROUGH IN THE WINTER MONTHS. SHORT-TERM BIKE RACKS HAVE BEEN ACCOMMODATED BY THE FRONT DOORS - A HIGHLY VISIBLE AREA. THE SURFACE PARKING LOT WILL BE EDGED WITH A WOOD COLOURED/TONED STEEL FENCE THAT HAS LASER CUT SLIVERS, WHICH WILL ADD INTEREST TO THE PARKADE AND PARKING FACADES WHILE BLOCKING THE GLARE OF HEADLIGHTS TO NEIGHBOURING PROPERTIES.

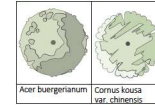
THE PODIUM ENCOMPASSES AN AMENITY AREA THAT IS DOTTED WITH SEVERAL EXPERIENCES FROM A 'HUNTING' THEMED PLAY AREA, TO AN OUTDOOR DINING SPACE, A RELAXING HAMMOCK NODE, COMMUNITY GARDENS, AND AN INTIMATE SEATING AREA UNDER A CANOPY OF TREES. THE HARDSCAPE MATERIALS, FROM THE RETAINING WALLS TO THE PAVERS, HAVE STAYED WITHIN NEUTRAL TONES, WITH COLOUR BROUGHT IN THROUGH THE PLANTING AND SITE FURNISHING FINISHES. MOST OF THE PLANTING ON PODIUM IS EDIBLE, EITHER FOR CULINARY PURPOSES OR FRESH EATING. FINALLY, UNIT SEPARATION IS ENHANCED WITH A LAYERED WOOD FENCE THAT WILL BREAK UP THE HORIZONTALITY OF THE PATIO CONFIGURATIONS AND PROVIDE A PUBLIC/PRIVATE INTERFACE WHILE STILL ALLOWING FOR 'EYES' ON THE PUBLIC SPACES.

SCALE

L-0.00



**TREE LEGEND**



Acer buergerianum  
Cornus kousa var. chinensis

QUAN. BOTANICAL NAME COMMON NAME SIZE

QUAN.	BOTANICAL NAME	COMMON NAME	SIZE
7	Acer buergerianum	Tribut. Maple	4x4 - 6cm cal.
9	Cornus kousa var. chinensis	Chinese Dogwood	4x4 - 6cm cal.

**TREE SCHEDULE**

**HARDSCAPE MATERIALS**

KEY	DESCRIPTION
	CITYSCAPE WINDSOR CONCRETE UNIT PAVERS SIZE: 150mm x 90mm x 60mm COLOUR: NATURAL MANUFACTURER: BASALTE
	CAST-IN-PLACE CONCRETE 100mm THICK COLOUR: NATURAL FINISH: BROOM/C/W SAWCUTS
	GRIP STRIP
	CAST-IN-PLACE CONCRETE RETAINING WALL TO BE ARCHITECTURALLY FINISHED AND PAINTED ARCTIC WHITE

**SOFTSCAPE MATERIALS**

KEY	DESCRIPTION
	SHRUB PLANTING GROWING MEDIUM SHRUBS - 600mm MIN. DEPTH TREES - 900mm MIN. DEPTH
	SOD

**SITE FURNISHINGS**

KEY	DESCRIPTION
	350 BIKE RACK Model #: LBRP-1-SS Colour: TRD Supplier: MAGLUN SITE FURNISHINGS Mount: SURFACE

**FENCING**

KEY	DESCRIPTION
	1.07m HIGH SEMI-PRIVATE STEEL FENCE COLOUR: WOOD
	PRIVACY SCREEN / GLASS RAILING BY ARCHITECTURE



**RE-ISSUED FOR  
DEVELOPMENT  
PERMIT**

NO.	ISSUE/REVISION	DATE
1	ISSUED FOR DP	23-12-08
2	RE-ISSUED FOR DP	24-03-13

**WHITETAIL 56TH  
APARTMENTS**

20710, 20721 & 20730, 20731  
EASTLEIGH CRESCENT,  
LANGLEY, B.C.

PROJECT # 23-142  
CITY FILE #



**SITE PLAN**



ACER BUERGERIANUM ACER BUERGERIANUM - FALL CORNUS KOUSA VAR. CHINENSIS



MAGLUN 350 BIKE RACK



CITYSCAPE WINDSOR CONCRETE UNIT  
PAVERS FROM BASALTE

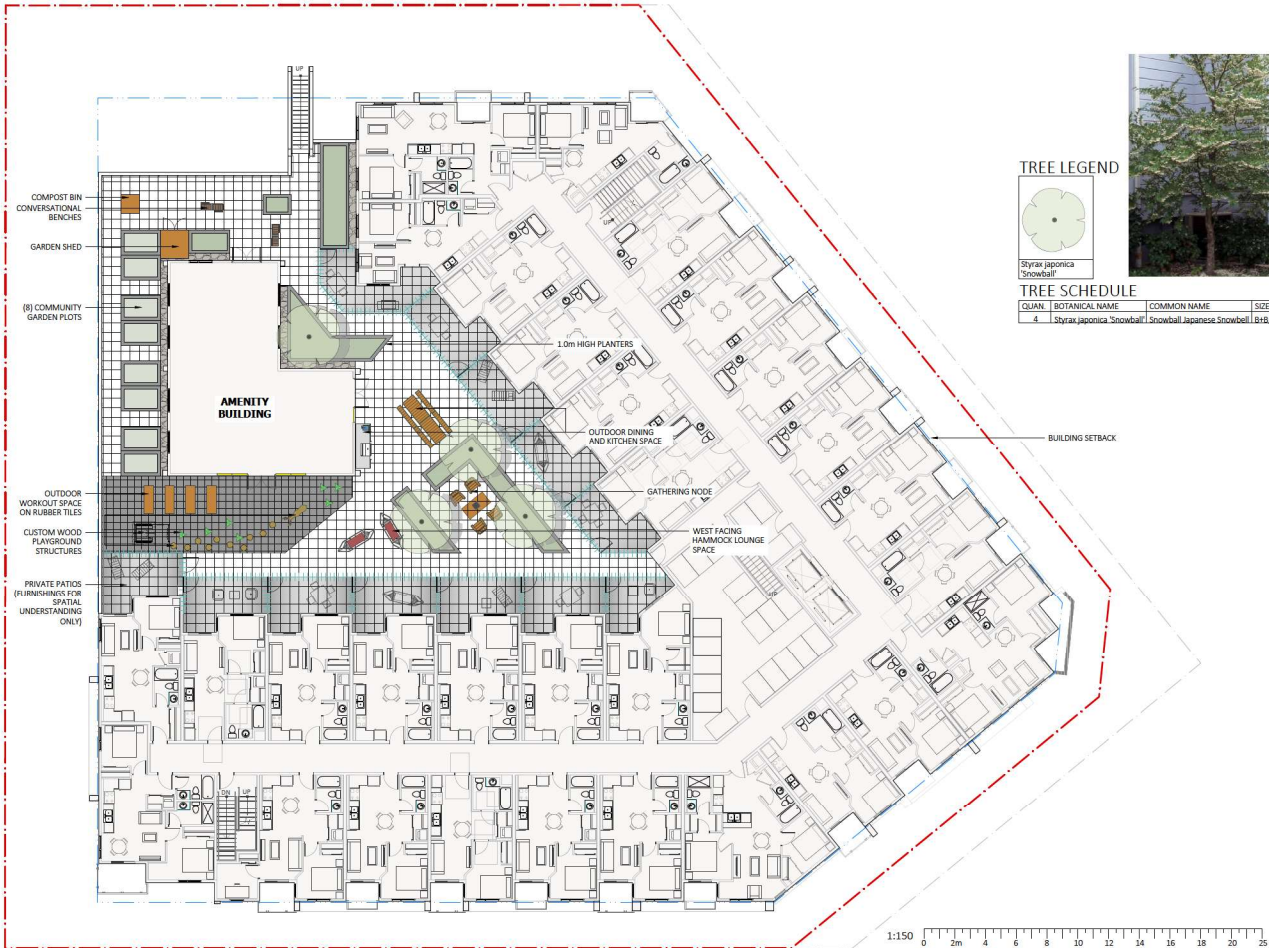


1.2M x 1.8M WOOD COLOURED STEEL  
FENCE FROM ARMOUR GUARD

SCALE 1:150



**L-1.00**



**TREE LEGEND**



**TREE SCHEDULE**

QUN	BOTANICAL NAME	COMMON NAME	SIZE
4	Styrax japonica 'Snowball'	Snowball Japanese Snowbell	1.816, 6cm caliper



**HARDSCAPE MATERIALS**

KEY	DESCRIPTION
[Symbol]	CONCRETE SLABS SIZE: 606 x 606 x 50.8mm COLOUR: WHITE MANUFACTURER: NEWSTONE GROUP
[Symbol]	CONCRETE SLABS SIZE: 606 x 606 x 50.8mm COLOUR: NORTHERN SHADOW MANUFACTURER: NEWSTONE GROUP
[Symbol]	RUBBER FLAYTTILES COLOUR: 100% RECYCLED BLACK MANUFACTURER: DINFLEX SUPPLIER: HABITAT SYSTEMS
[Symbol]	DORADO PLANTER WALL SIZE: 203 x 610 x 127mm COLOUR: CHARCOAL MANUFACTURER: NEWSTONE GROUP

**SOFTSCAPE MATERIALS**

KEY	DESCRIPTION
[Symbol]	SHRUB PLANTING GROWING MEDIUM: SHRUBS - 450mm MIN. DEPTH TREES - 900mm MIN. DEPTH
[Symbol]	COMMUNITY GARDEN GROWING MEDIUM: 450mm MIN. DEPTH

**SITE FURNISHINGS**

KEY	DESCRIPTION
[Symbol]	RAVIVIV 2700000 TANK Model #: BXC1-68 w/ gameboard Colour: Modern Khaki Powder Coat w/ Redwood Recycled Plastic Lumber Supplier: Wishbone Site Furnishings Mount: Surface
[Symbol]	BEAT COUSINGS POUF Model #: JLC-34 Colour: Modern Khaki Powder Coat w/ Redwood Recycled Plastic Lumber Supplier: Wishbone Site Furnishings Mount: Surface
[Symbol]	CLUSTER SEATINGS Model #: VINCENT PICNIC TABLE - 6' Colour: Modern Khaki Powder Coat w/ Redwood Recycled Plastic Lumber Supplier: Wishbone Site Furnishings Mount: Surface

**FENCING**

KEY	DESCRIPTION
[Symbol]	1.5m HIGH PRIVACY FENCE
[Symbol]	GUARDRAIL BY ARCHITECTURE



**RE-ISSUED FOR DEVELOPMENT PERMIT**

NO.	ISSUE/REVISION	DATE
1	ISSUED FOR DP	23-12-08
2	RE-ISSUED FOR DP	24-03-13

**WHITETAIL 56TH APARTMENTS**

20719, 20721 & 20720, 20731  
EASTLEIGH CRESCENT,  
LANGLEY, B.C.

PROJECT # 23-142  
CITY FILE #

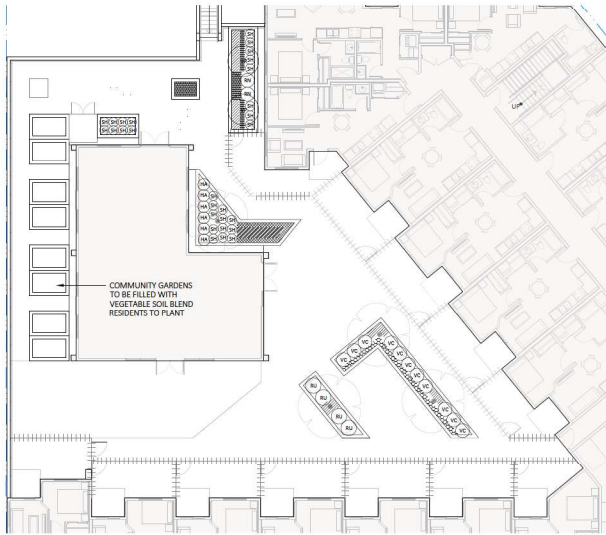


**PODIUM PLAN**



SCALE 1:150





**1**  
1:150  
**PODIUM PLANTING PLAN**  
Scale 1:150

**PLANTING SCHEDULE - PODIUM**

KEY	QUAN.	BOTANICAL NAME	COMMON NAME	SIZE
AS	35	Allium schoenoprasum	Culinary Chives	No. 1 Pot
FR	24	Fragaria chiloensis	Beach Strawberry	No. 3 Pot
HA	6	Hydrangea arborescens 'Invincible Wee White'	Invincible Wee White Hydrangea	No. 3 Pot
LA	42	Lavandula angustifolia 'Arctic Snow'	Arctic Snow Lavender	No. 1 Pot
OR	10	Origanum vulgare	Culinary Oregano	No. 3 Pot
RI	2	Ribes nigrum 'Ben Nevis'	Ben Nevis Black Currant	No. 3 Pot
RI	4	Ribes uva 'Little Ben'	Little Ben Gooseberry	No. 3 Pot
SC	38	Sarcococca hookeriana 'Sweet & Lo'	Sweet & Lo Sweetbox	No. 3 Pot
TH	24	Thymus vulgaris	Culinary Thyme	No. 1 Pot
VC	11	Vaccinium corymbosum 'Sky Dew Gold'	Sky Dew Gold Blueberry	No. 3 Pot
VP	2	Vaccinium parvifolium	Red Huckleberry	No. 5 Pot



**2**  
1:150  
**SITE PLANTING PLAN**  
Scale 1:150



**ARCHITECTURAL PALETTE**

**PLANTING SCHEDULE - SITE**

KEY	QUAN.	BOTANICAL NAME	COMMON NAME	SIZE
DE	50	Deutzia 'Yuki Snowflake'	Yuki Snowflake Japanese Snow Flower	No. 2 Pot
ER	9	Erica carnea 'Springwood White'	Springwood White Heather	No. 1 Pot
EU	22	Euonymus japonicus 'Paloma Blanca'	Paloma Blanca Euonymus	No. 3 Pot
HA	13	Hydrangea arborescens 'Invincible Wee White'	Invincible Wee White Hydrangea	No. 3 Pot
IX	14	Ilex verticillata 'Little Goblin Orange'	Little Goblin Orange Holly	No. 3 Pot
TM	63	Taxus media 'Hill'	Hill View	No. 3 Pot



1:150 0 2m 4 6 8 10 12 14 16 18 20 25



**RE-ISSUED FOR DEVELOPMENT PERMIT**

NO.	ISSUE/REVISION	DATE
1	ISSUED FOR DP	23-12-08
2	RE-ISSUED FOR DP	24-03-13

**WHITETAIL 56TH APARTMENTS**

20710, 20721 & 20730, 20731  
EASTLEIGH CRESCENT,  
LANGLEY, B.C.

PROJECT # 23-142  
CITY FILE #



**PLANTING PLANS**

SCALE 1:150



**L-1.20**