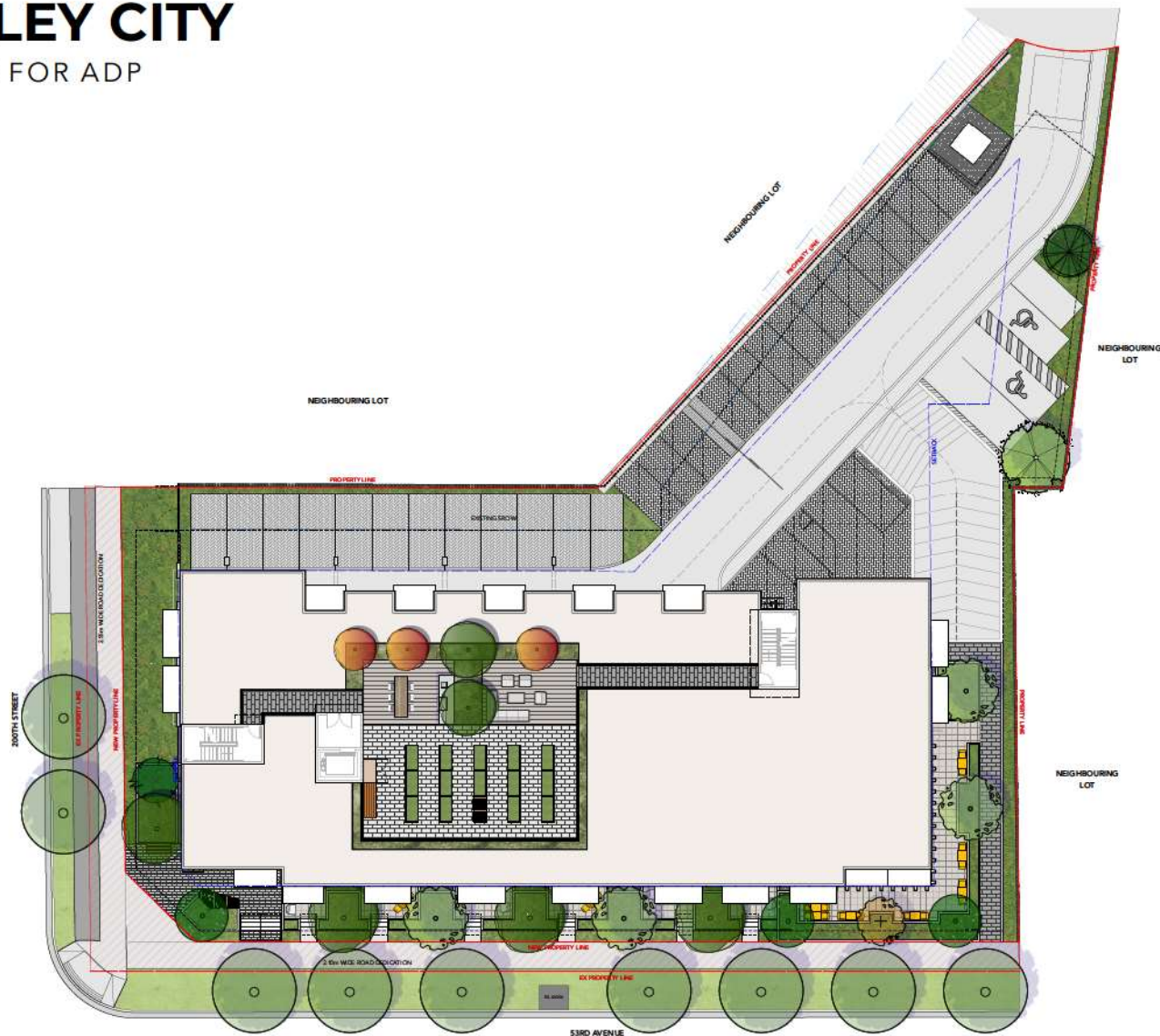


# 53 AVE. LANGLEY CITY

LANDSCAPE SET - ISSUED FOR ADP  
MAY 7<sup>th</sup>, 2024

## LANDSCAPE DRAWING INDEX

L0.0	COVER SHEET
L0.1	TREE MANAGEMENT PLAN
L0.2	SOIL VOLUME DIAGRAM
L1.0	LANDSCAPE PLAN - GROUND
L1.1	LANDSCAPE PLAN - ROOFTOP
L1.2	DETAILED PLANS
L2.0	GRADING PLAN - GROUND
L3.0	PLANTING PALETTE
L3.1	PLANTING PLAN - GROUND
L3.2	PLANTING PLAN - ROOFTOP
L4.0	LIGHTING PLAN - GROUND
L4.1	LIGHTING PLAN - ROOFTOP
L4.2	LIGHTING MATERIALITY
L4.3	FENCING PLAN
L5.0	SECTIONS
L6.0	DETAILS
L6.1	DETAILS
L6.2	DETAILS
L6.3	DETAILS
L6.4	DETAILS



David Stoyko  
Landscape Architect

2884 6TH AVENUE EAST  
VANCOUVER BC V6M 1R3  
PH: 604.203.8488

DAVID STOYKO LANDSCAPE ARCHITECT DOES NOT GUARANTEE THE EXISTENCE, LOCATION, AND ELEVATION OF ANY ELEMENT AT THE PROJECT SITE, INCLUDING UTILITIES AND/OR CONCEALED STRUCTURES, OR THE ACCURACY OF ANY INFORMATION FROM GEO FROM OTHER CONSULTANTS OR SOURCES. THE CONTRACTOR IS RESPONSIBLE FOR VERIFYING ALL SITE CONDITIONS.

THESE DRAWINGS HAVE BEEN PREPARED FOR THE CLIENT FOR THIS PROJECT AND SHOULD NOT BE USED OTHERWISE WITHOUT PERMISSION.

DO NOT SCALE OFF OF THESE DRAWINGS. NO RESPONSIBILITY CAN BE TAKEN WITH ANY CROSSING OR MODIFYING OFF OF THE DRAWINGS.

NOT FOR CONSTRUCTION



12	
11	
10	
9	
8	ISSUED FOR ADP 21.05.07
7	ISSUED FOR ADP 2404.24
6	ISSUED FOR DP 2403.04
5	ISSUED FOR COORDINATION 2403.01
4	ISSUED FOR REVIEW 2402.16
3	ISSUED FOR OPTED REVIEW 2402.02
2	ISSUED FOR REVIEW 2402.01
1	ISSUED FOR PRELIMINARY REVIEW 23.12.22

REVISIONS



200<sup>TH</sup> STREET & 53<sup>RD</sup>  
AVENUE

5302 200<sup>th</sup> Street & 2011-31 53<sup>rd</sup>  
Avenue  
Langley, British Columbia

Scale:	
Drawn:	PP
Reviewed:	DS
Project No.	22-017

COVER SHEET

L0.0

DAVID STOYKO LANDSCAPE ARCHITECT DOES NOT GUARANTEE THE ACCURACY, LOCATION, AND ELEVATION OF ANY ELEMENT AT THE PROJECT SITE, INCLUDING UTILITIES AND/OR CONSIDERED STRUCTURES, OR THE ACCURACY OF ANY INFORMATION PROVIDED FROM OTHER CONSULTANTS OR SOURCES. THE CONTRACTOR IS RESPONSIBLE FOR VERIFYING ALL SITE CONDITIONS.

THESE DRAWINGS HAVE BEEN PREPARED FOR THE CLIENT FOR THE PROJECT AND SHOULD NOT BE USED OTHERWISE WITHOUT PERMISSION.

DO NOT SCALE OFF OF THESE DRAWINGS. INDETERMINABILITY CAN BE TAKEN WITH AAK ERRORS BY MEASURING OFF OF THESE DRAWINGS.

NOT FOR CONSTRUCTION



12	
11	
10	
9	
8	ISSUED FOR ADP 2405-07
7	ISSUED FOR ADP 2404-24
6	ISSUED FOR DP 2403-01
5	ISSUED FOR COORDINATION 2403-01
4	ISSUED FOR REVIEW 2402-16
3	ISSUED FOR CP'D REVIEW 2402-02
2	ISSUED FOR REVIEW 2402-01
1	ISSUED FOR PRELIMINARY REVIEW 23-12-22

REVISIONS



200<sup>TH</sup> STREET & 53<sup>RD</sup> AVENUE

5302 200<sup>th</sup> Street & 20011-31 53<sup>rd</sup> Avenue  
Langley, British Columbia

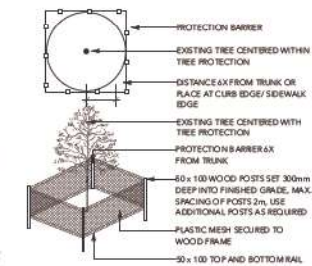
Scale:	
Drawn:	MGC
Reviewed:	DS
Project No.:	22-017

TREE MANAGEMENT PLAN

L0.1

TREE RETENTION / REMOVAL LEGEND

SYMBOL	DESCRIPTION
	TREE TO BE RETAINED PER ARBORIST REPORT
	TREE TO BE REMOVED PER ARBORIST REPORT
	TREE PROTECTION FENCING TREE PROTECTION FENCING TO BE INSTALLED PER CITY OF LANGLEY STANDARDS AND INSPECTED BY ARBORIST PRIOR TO CONSTRUCTION ACTIVITY
#12	TREE TAG PER ARBORIST REPORT

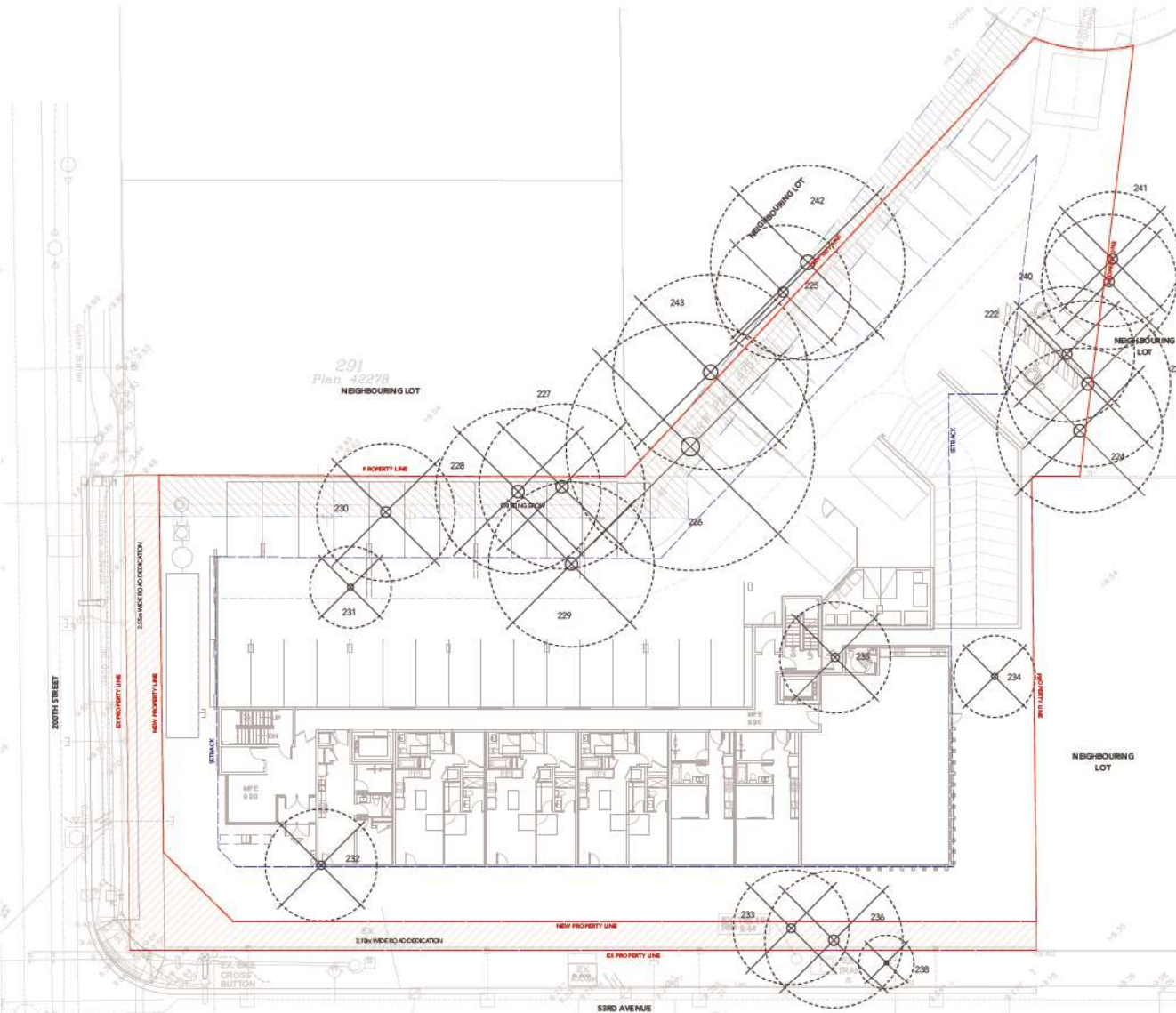


NOTES:

1. THIS PLAN HAS BEEN PREPARED WITH INFORMATION SUPPLIED BY THE PROJECT SURVEYOR, ARCHITECT, PLANNER, LANDSCAPE ARCHITECT, ARBORIST, AND CIVIL ENGINEER AND HAS BEEN REVIEWED AND SIGNED OFF BY EACH CONSULTANT AS BEING ACCURATE AND COMPLETE WITH RESPECT TO EXISTING AND ULTIMATE SITE CONDITIONS RELATED TO TREE RETENTION AND PROTECTION MATTERS.
2. ELEVATIONS SHOWN ARE IN METRIC.

TREE PROTECTION NOTES:

1. DO NOT REMOVE OR RELOCATE ANY TREE, EXCEPT AS INDICATED ON PLANS.
2. INSTALL TREE PROTECTION BARRIERS AROUND ALL TREES TO BE PRESERVED. REMOVE ALL TREE PROTECTION BARRIERS AFTER CONSTRUCTION.
3. CONSULTANT TO PROVIDE WRITTEN INSPECTION AND APPROVAL OF ALL BARRIERS BEFORE CONSTRUCTION BEGINS.
4. LANDSCAPE ARCHITECT TO BE ON-SITE FOR WORK WITHIN TREE PROTECTION ZONES OR EXISTING TREE ROOTS.
5. ALL TREE PROTECTION FENCING MUST REMAIN IN PLACE AND IN GOOD ORDER THROUGHOUT THE CONSTRUCTION PROCESS. ANY ALTERATION OF THE FENCES MUST BE PRE-APPROVED BY THE ARBORIST.
6. ANY DAMAGE TO EXISTING TREES SHALL BE REPAIRED TO THE SATISFACTION OF THE CONSULTANT AT CONTRACTOR EXPENSE.



1 Tree Management Plan  
Scale: 1:150

DAVID STOYKO LANDSCAPE ARCHITECT DOES NOT GUARANTEE THE EXISTENCE, LOCATION, AND ELEVATION OF ANY ELEMENT AT THE PROJECT SITE, INCLUDING UTILITIES AND / OR CONCEALED STRUCTURES, OR THE ACCURACY OF ANY INFORMATION PROVIDED FROM OTHER CONSULTANTS OR SOURCES. THE CONTRACTOR IS RESPONSIBLE FOR VERIFYING ALL SITE CONDITIONS.

THESE DRAWINGS HAVE BEEN PREPARED FOR THE CLIENT FOR THIS PROJECT AND SHOULD NOT BE USED OTHERWISE WITHOUT PERMISSION.

DO NOT SCALE OFF OF THESE DRAWINGS. NO RESPONSIBILITY CAN BE TAKEN WITH ANY ERRORS BY MEASURING OFF OF THESE DRAWINGS.

NOT FOR CONSTRUCTION



*DSK*

12	
11	
10	
9	
8	ISSUED FOR ADP 2405-07
7	ISSUED FOR ADP 2404-24
6	ISSUED FOR DP 2403-01
5	ISSUED FOR COORDINATION 2403-01
4	ISSUED FOR REVIEW 2402-16
3	ISSUED FOR CP/ED REVIEW 2402-02
2	ISSUED FOR REVIEW 2402-01
1	ISSUED FOR PRELIMINARY REVIEW 23-12-22
REVISIONS	



**200<sup>TH</sup> STREET & 53<sup>RD</sup> AVENUE**

5302 200<sup>th</sup> Street & 20011-31 53<sup>rd</sup> Avenue  
Langley, British Columbia

Scale:	
Drawn:	PP
Reviewed:	DS
Project No.:	22-017

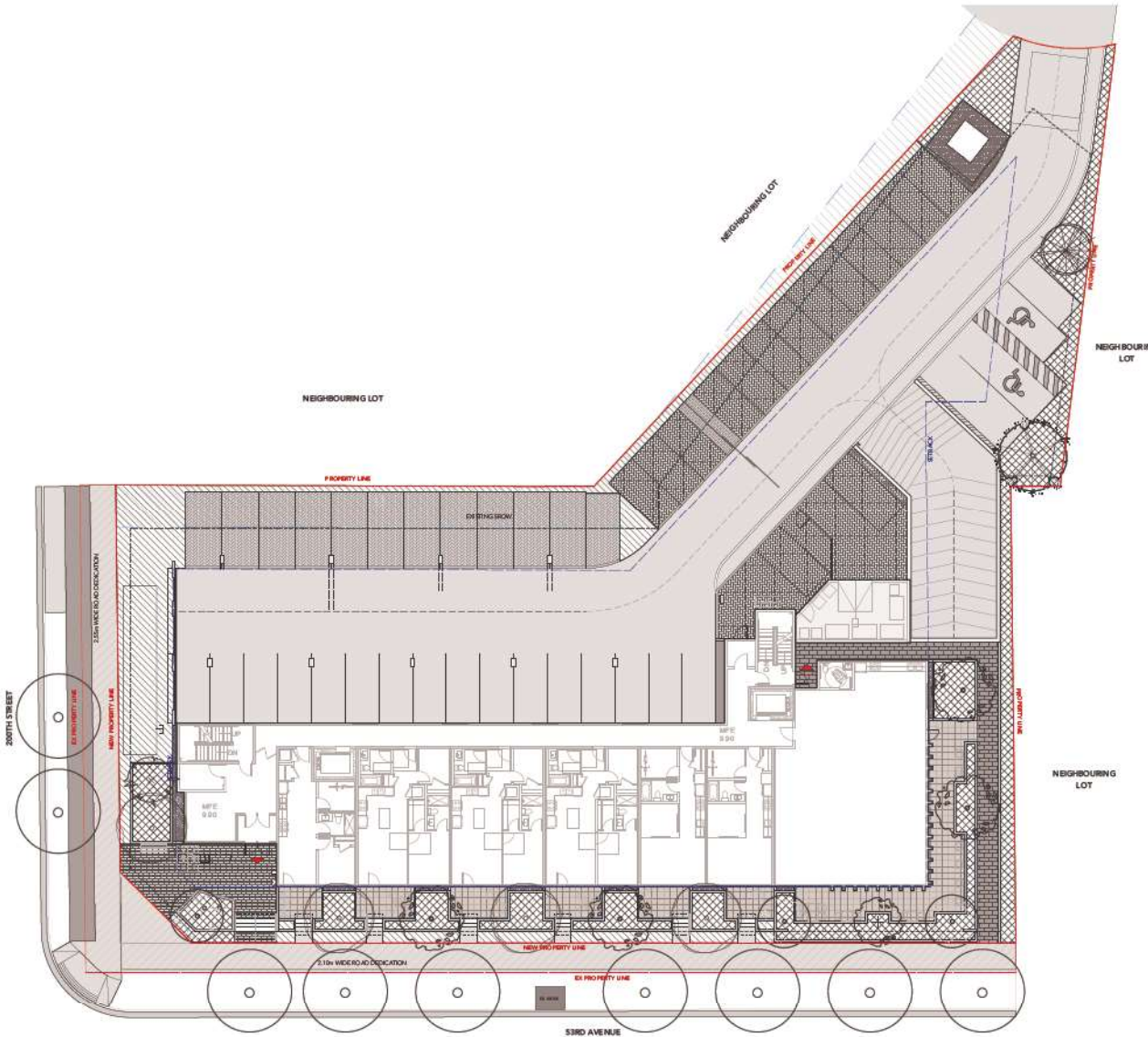
**SOIL DEPTH DIAGRAM**

L0.2

**SOIL DEPTH LEGEND**

SYMBOL	DESCRIPTION
	915MM (3'0") TREE PLANTING MINIMUM DEPTH
	610MM (1'6"-2'0") SHRUB PLANTING MINIMUM DEPTH
	450MM (1'6") GROUND-COVER PLANTING MINIMUM DEPTH

**NOTES:**  
1. ALL SOIL DEPTHS TO MEET OR EXCEED THE BC LANDSCAPE STANDARD, LATEST EDITION.



**1 Landscape Plan - Ground**  
Scale: 1:150



LAYOUT AND MATERIALS LEGEND - GROUND

KEY	SYMBOL	DETAIL	DESCRIPTION
1		3.4 L6.1	LINEAR UNIT PAVERS TECHO-BLOC LINNEA (CHAMPLAIN GREY)
2		3.4 L6.1	FEATURE PAVERS BARKMAN BROADWAY PLANK (STERLING, NATURAL)
3		7 L6.1	VEHICULAR CONCRETE PAVERS BARKMAN - HOLLAND PAVERS (NATURAL, SIERRA GREY)
4		1.2 L6.1	CIP CONCRETE PAVING PER PLANS AND DETAILS
5		6 L6.1	2x2 SLAB PAVERS (TYPE 1) BELGARD - TEXADA HYDRAPRESSED SLABS (NATURAL)
6		8 L6.1	GRAVEL PER PLANS AND DETAILS
7		1.7 L6.0	PROPOSED PLANTING REFER TO PLANT LIST
8			PROPOSED SODDED LAWN PER PLANS AND DETAILS
9		9 L6.2	BIKE RACK 2 CLASS B SPACES EACH
10			SMALL BOULDERS AND LOGS PER PLANS AND DETAILS
11		9 L6.1	CONCRETE PLANTER WALL PER PLANS AND DETAILS
12		1 L6.3	LOBBY ENTRY SEATING PLATFORM PER PLANS AND DETAILS



1 Landscape Plan - Ground  
Scale: 1:150

DAVID STOYKO LANDSCAPE ARCHITECT DOES NOT GUARANTEE THE EXISTENCE, LOCATION, AND ELEVATION OF ANY ELEMENT AT THE PROJECT SITE, INCLUDING UTILITIES AND / OR CONCEALED STRUCTURES, OR THE ACCURACY OF ANY INFORMATION PROVIDED FROM OTHER CONSULTANTS OR SOURCES. THE CONTRACTOR IS RESPONSIBLE FOR VERIFYING ALL SITE CONDITIONS.

THESE DRAWINGS HAVE BEEN PROVIDED FOR THE CLIENT FOR THE PROJECT AND SHOULD NOT BE USED OTHERWISE WITHOUT PERMISSION.

DO NOT SCALE OFF OF THESE DRAWINGS. NO RESPONSIBILITY CAN BE TAKEN WITH ANY ERRORS BY MEASURING OFF OF THESE DRAWINGS.

NOT FOR CONSTRUCTION



NO.	REVISIONS	DATE
12		
11		
10		
9		
8	ISSUED FOR ADP	2405-07
7	ISSUED FOR ADP	2404-24
6	ISSUED FOR DP	2403-04
5	ISSUED FOR COORDINATION	2403-01
4	ISSUED FOR REVIEW	2402-16
3	ISSUED FOR CP'D REVIEW	2402-02
2	ISSUED FOR REVIEW	2402-01
1	ISSUED FOR PRELIMINARY REVIEW	23-12-22



200<sup>TH</sup> STREET & 53<sup>RD</sup> AVENUE

5302 200<sup>th</sup> Street & 20011-31 53<sup>rd</sup> Avenue  
Langley, British Columbia

Scale:	
Drawn:	PP
Reviewed:	DS
Project No.:	22-017

LANDSCAPE PLAN - LEVEL 1

DAVID STOYKO LANDSCAPE ARCHITECT DOES NOT GUARANTEE THE EXISTENCE, LOCATION, AND ELEVATION OF ANY ELEMENT AT THE PROJECT SITE, INCLUDING UTILITIES AND / OR CONCEALED STRUCTURES, OR THE ACCURACY OF ANY INFORMATION PROVIDED FROM OTHER CONSULTANTS OR SOURCES. THE CONTRACTOR IS RESPONSIBLE FOR VERIFYING ALL SITE CONDITIONS.

THESE DRAWINGS HAVE BEEN PREPARED FOR THE CLIENT FOR THIS PROJECT AND SHOULD NOT BE USED OTHERWISE WITHOUT PERMISSION.

DO NOT SCALE OFF OF THESE DRAWINGS. NON RESPONSIBILITY CAN BE TAKEN WITH ANY ERRORS BY MEASURING OFF OF THESE DRAWINGS.

NOT FOR CONSTRUCTION



*DSK*

12	
11	
10	
9	
8	ISSUED FOR ADP 2405-07
7	ISSUED FOR ADP 2404-24
6	ISSUED FOR DP 2403-01
5	ISSUED FOR COORDINATION 2403-01
4	ISSUED FOR REVIEW 2402-16
3	ISSUED FOR CP'D REVIEW 2402-02
2	ISSUED FOR REVIEW 2402-01
1	ISSUED FOR PRELIMINARY REVIEW 23-12-22

REVISIONS



200<sup>TH</sup> STREET & 53<sup>RD</sup>  
AVENUE

5302 200<sup>th</sup> Street & 20011-31 53<sup>rd</sup>  
Avenue  
Langley, British Columbia

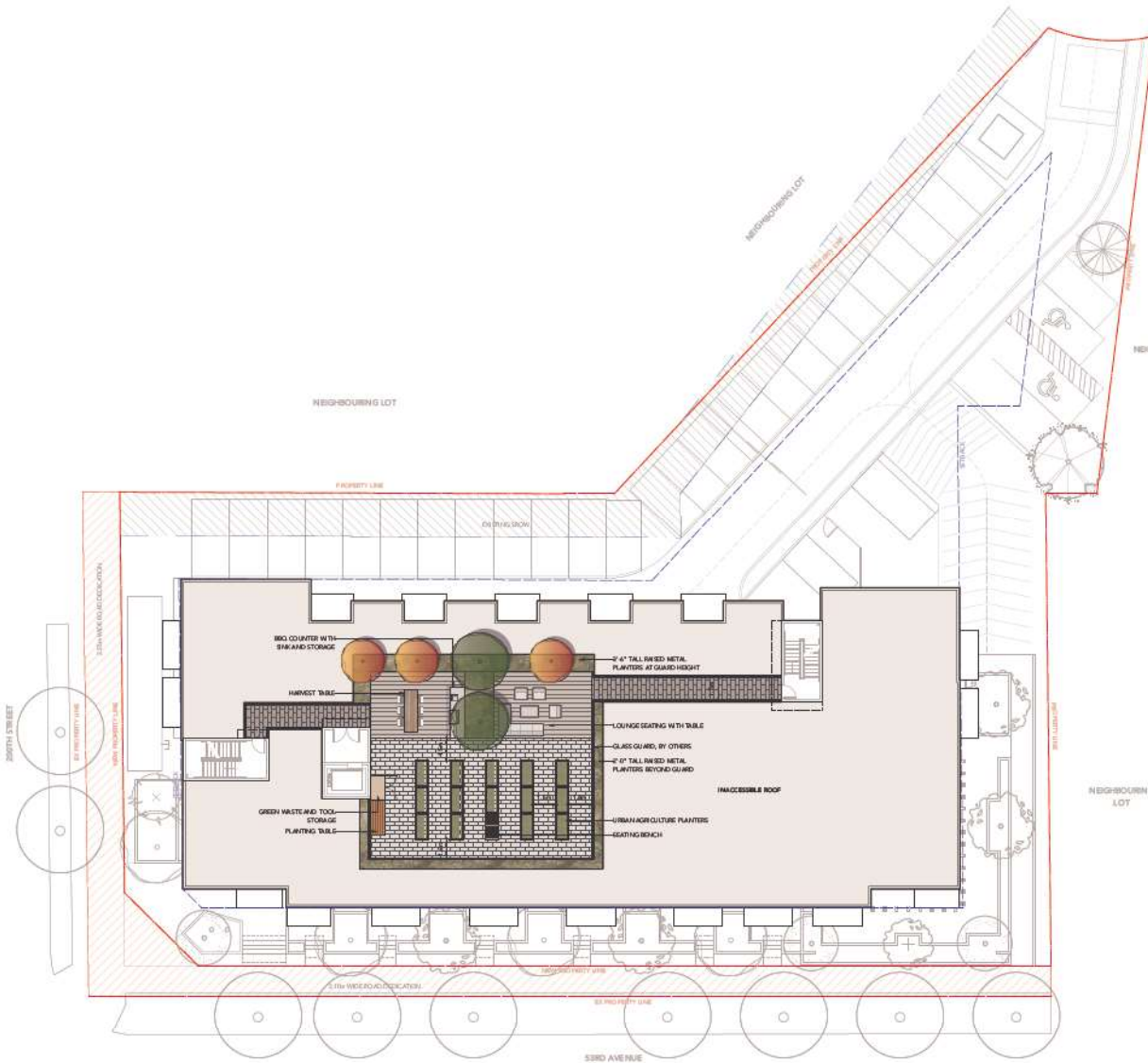
Scale: \_\_\_\_\_  
Drawn: \_\_\_\_\_ PP  
Reviewed: \_\_\_\_\_ DS  
Project No. 22-017

LANDSCAPE PLAN -  
ROOF LEVEL

L1.1

LAYOUT AND MATERIALS LEGEND - ROOF

KEY	SYMBOL	DETAIL	DESCRIPTION
1		6 L6.1	12"x24" SLAB PAVERS (TYPE 2) BELGARD: TEXADA SLAB (NATURAL)
2		6 L6.1	12"x24" SLAB PAVERS (TYPE 3) BELGARD: TEXADA SLAB (CHARCOAL)
3		10 L6.1	WOOD-LIKE PORCELAIN PAVERS DAL TILE: COMMISSARY SERIES (COMMANDER BEIGE)
4		1 L6.2	RAISED METAL PLANTERS PER PLANS AND DETAILS
5		3 L6.3	BENCH SEATING PER PLANS AND DETAILS
6		4 L6.2	URBAN AGRICULTURE PLANTERS PER PLANS AND DETAILS
7		8 L6.2	BBQ AND COUNTER PER PLANS AND DETAILS
8		7 L6.2	HARVEST TABLE AND SEATING PER PLANS AND DETAILS
9		2 L6.3	TOOL STORAGE PER PLANS AND DETAILS
10		5-6 L6.2	LOUNGE SEATING AND TABLE PER PLANS AND DETAILS



1 Landscape Plan - Roof  
Scale: 1:150



DAVID STOYKO LANDSCAPE ARCHITECT DOES NOT GUARANTEE THE EXISTENCE, LOCATION, AND ELEVATION OF ANY ELEMENT AT THE PROJECT SITE, INCLUDING UTILITIES AND / OR CONCEALED STRUCTURES, OR THE ACCURACY OF ANY INFORMATION PROVIDED FROM OTHER CONSULTANTS OR SOURCES. THE CONTRACTOR IS RESPONSIBLE FOR VERIFYING ALL SITE CONDITIONS.

THESE DRAWINGS HAVE BEEN PROVIDED FOR THE CLIENT FOR THE PROJECT AND SHOULD NOT BE USED OTHERWISE WITHOUT PERMISSION.

DO NOT SCALE OFF OF THESE DRAWINGS. NO RESPONSIBILITY CAN BE TAKEN WITH ANY ERRORS BY MEASURING OFF OF THESE DRAWINGS.

NOT FOR CONSTRUCTION



DSK

12	
11	
10	
9	
8	ISSUED FOR ADP 2405-07
7	ISSUED FOR ADP 2404-24
6	ISSUED FOR DP 2403-01
5	ISSUED FOR COORDINATION 2403-01
4	ISSUED FOR REVIEW 2402-16
3	ISSUED FOR CP'D REVIEW 2402-02
2	ISSUED FOR REVIEW 2402-01
1	ISSUED FOR PRELIMINARY REVIEW 23-12-22
REVISIONS	



200<sup>TH</sup> STREET & 53<sup>RD</sup> AVENUE

5302 200<sup>th</sup> Street & 20011-31 53<sup>rd</sup> Avenue  
Langley, British Columbia

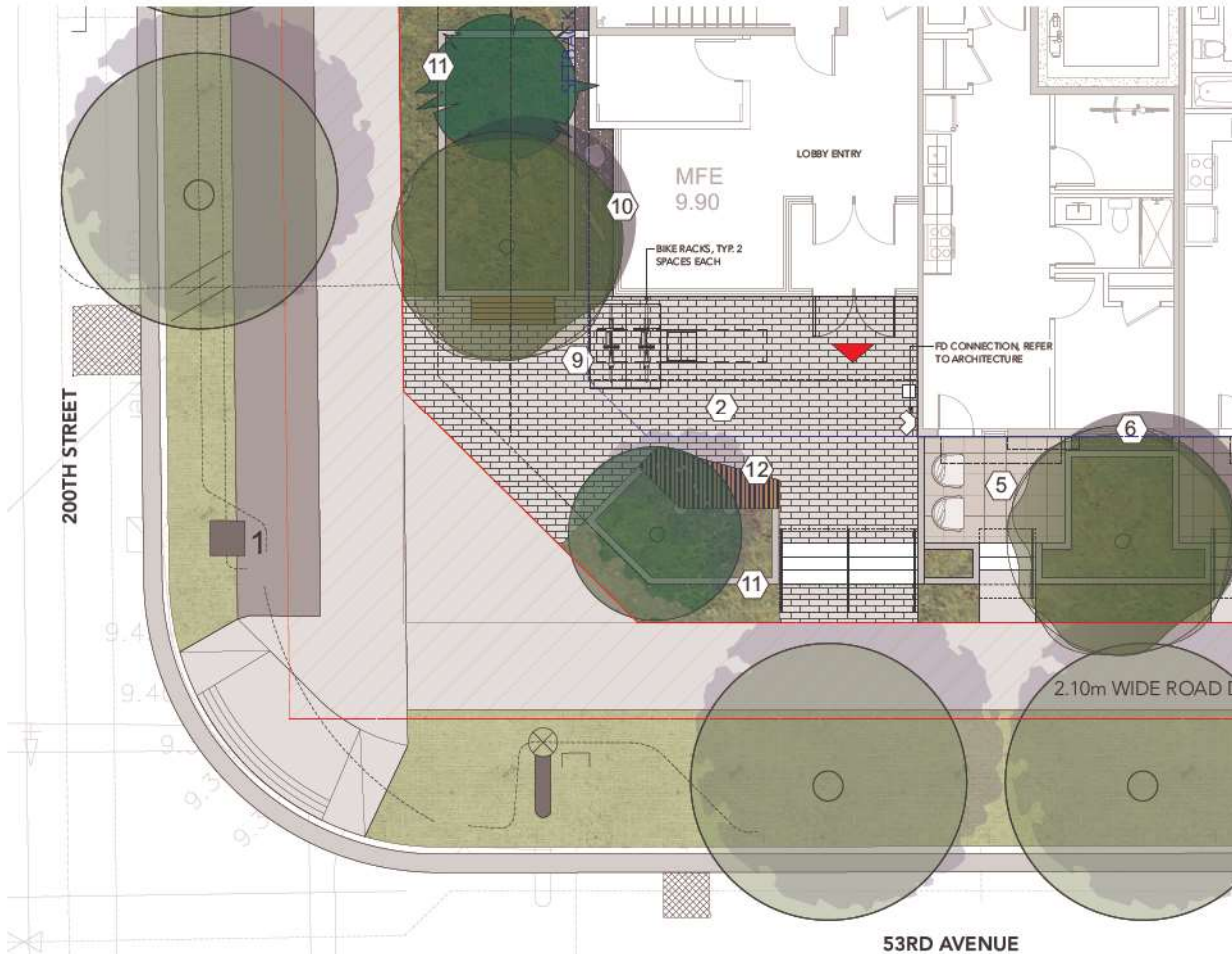
Scale:	
Drawn:	PP
Reviewed:	DS
Project No.:	22-017

DETAILED PLANS

L1.2

LAYOUT AND MATERIALS LEGEND - GROUND

KEY	SYMBOL	DETAIL	DESCRIPTION
1		3.4 L6.1	LINEAR UNIT PAVERS TECHO-BLOC LINNEA (CHAMPLAIN GREY)
2		3.4 L6.1	FEATURE PAVERS BARKMAN BROADWAY PLANK (STERLING, NATURAL)
3		7 L6.1	VEHICULAR CONCRETE PAVERS BARKMAN - HOLLAND PAVERS (NATURAL, SIERRA GREY)
4		1.2 L6.1	CIP CONCRETE PAVING PER PLANS AND DETAILS
5		6 L6.1	2'x2' SLAB PAVERS (TYPE 1) BELGARD: TEXADA HYDRAPRESSED SLABS (NATURAL)
6		8 L6.1	GRAVEL PER PLANS AND DETAILS
7		1.7 L6.0	PROPOSED PLANTING REFER TO PLANT LIST
8			PROPOSED SODDED LAWN PER PLANS AND DETAILS
9		9 L6.2	BIKE RACK 2 CLASS B SPACES EACH
10			SMALL BOULDERS AND LOGS PER PLANS AND DETAILS
11		9 L6.1	CONCRETE PLANTER WALL PER PLANS AND DETAILS
12		1 L6.3	LOBBY ENTRY SEATING PLATFORM PER PLANS AND DETAILS



1 Detailed Plan - Lobby Entry  
Scale: 1:50

DAVID STOYKO LANDSCAPE ARCHITECT DOES NOT GUARANTEE THE ACCURACY, LOCATION, AND ELEVATION OF ANY ELEMENT AT THE PROJECT SITE, INCLUDING UTILITIES AND / OR CONCRETE STRUCTURES, OR THE ACCURACY OF ANY INFORMATION PROVIDED FROM OTHER CONSULTANTS OR SOURCES. THE CONTRACTOR IS RESPONSIBLE FOR VERIFYING ALL SITE CONDITIONS.

THESE DRAWINGS HAVE BEEN PREPARED FOR THE CLIENT FOR THE PROJECT AND SHOULD NOT BE USED OTHERWISE WITHOUT PERMISSION.

DO NOT SCALE OFF OF THESE DRAWINGS. RESPONSIBILITY CAN BE TAKEN WITH ANY ERRORS BY MEASURING OFF OF THESE DRAWINGS.

NOT FOR CONSTRUCTION



12	
11	
10	
9	
8	ISSUED FOR ADP 2405-07
7	ISSUED FOR ADP 2404-24
6	ISSUED FOR DP 2403-04
5	ISSUED FOR COORDINATION 2403-01
4	ISSUED FOR REVIEW 2402-16
3	ISSUED FOR CP'D REVIEW 2402-02
2	ISSUED FOR REVIEW 2402-01
1	ISSUED FOR PRELIMINARY REVIEW 23-12-22

REVISIONS



200<sup>TH</sup> STREET & 53<sup>RD</sup>  
AVENUE

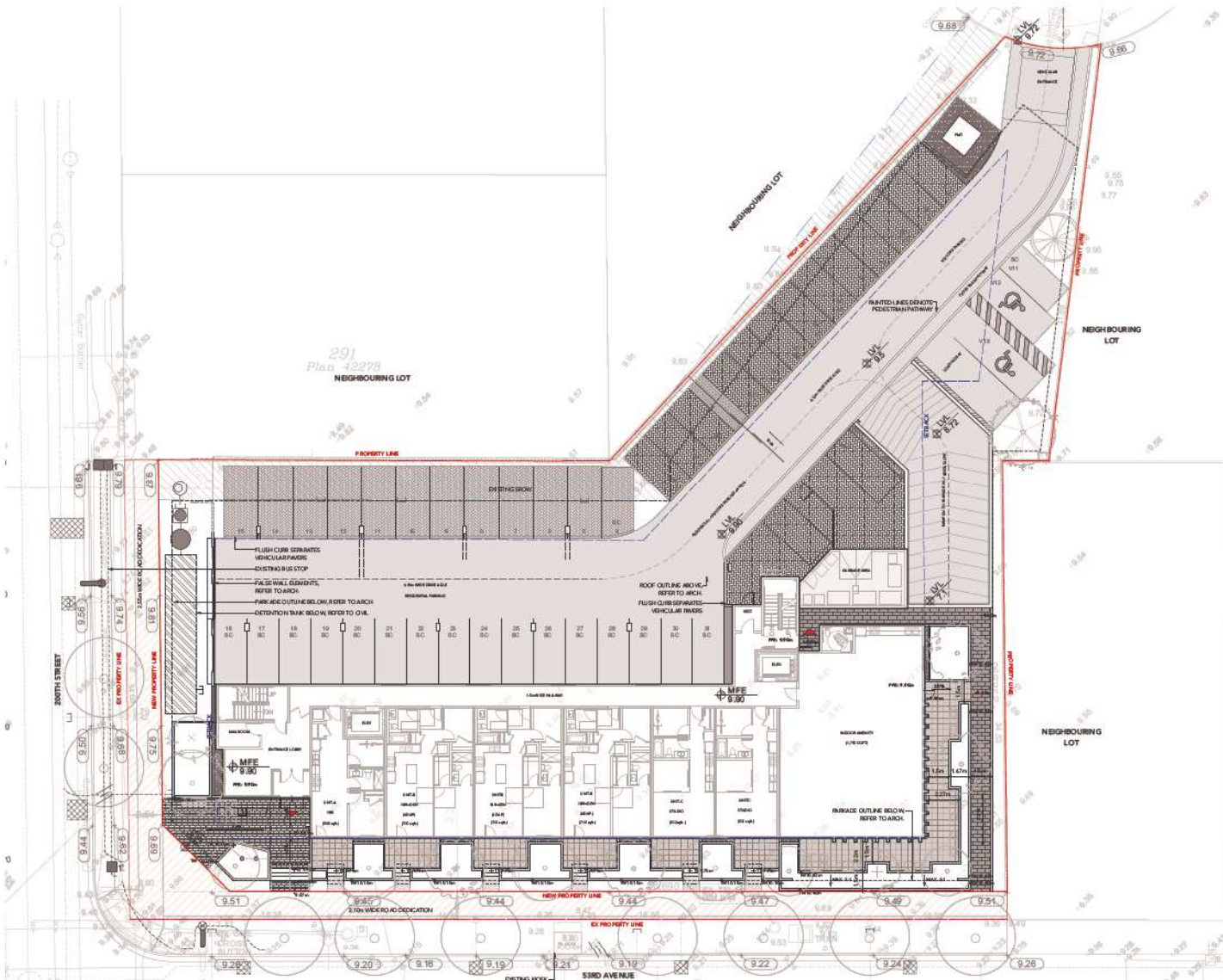
5302 200<sup>th</sup> Street & 20011-31 53<sup>rd</sup>  
Avenue  
Langley, British Columbia

Scale:	
Drawn:	PP
Reviewed:	DS
Project No.:	22-017

GRADING PLAN -  
LEVEL 1

GRADING LEGEND

SYMBOL	DESCRIPTION
+TW10.32m	LANDSCAPE GRADES
MFE 9.90	ARCHITECTURAL GRADES
9.26	CIVIL GRADES



1 Grading Plan - Ground  
Scale: 1:150

OVERALL CONCEPT



LAYERED & TEXTURED PLANTING SCHEME THAT PROVIDES ALL-SEASON INTEREST USING PREDOMINANTLY NATIVE PLANTS

TREES



TALL SHRUBS



LOW SHRUBS



PERENNIALS & GROUND COVER



SOD LAWN



PLANT LIST

QTY.	BOTANICAL NAME	COMMON NAME	SIZE	SPACING	NOTES
<b>TREES</b>					
9	Acer x freemanii	Freeman's Maple	7cm cal.	As shown	
1	Pinus heldreichii 'Compact Gem'	Compact Gem Bosnian Pine	5cm cal. Wire Basket	As shown	
3	Acer shirasawanum 'Moonrise'	Full Moon Maple	5cm cal. Wire Basket	As shown	
6	Zelkova serrata	Japanese Zelkova	7cm cal. Wire Basket	As shown	
1	Cercis canadensis	Eastern Redbud	5cm cal. Wire Basket	As shown	
1	Pinus contorta var. contorta	Show Pine	5cm cal. Wire Basket	As shown	
1	Liquidambar styraciflua	Tulip Tree	7cm cal. Wire Basket	As shown	
3	Arbutus unedo	Strawberry Tree	5cm cal. Wire Basket	As shown	
4	Acer glabrum	Paperbark Maple	5cm cal. Wire Basket	As shown	
20	<b>TOTAL TREES (excluding street trees)</b>				
<b>TALL SHRUBS</b>					
14	Hamamelis x intermedia	Witch Hazel	#5 Pot	24" o.c.	
26	Ceanothus 'Victoria'	California Lilac	#2 pot	24" o.c.	
23	Rubus spectabilis	Salmonberry	#5 Pot	36" o.c.	
14	Fatsia japonica	Japanese Aralia	#2 pot	24" o.c.	
61	Lonicera pileata	Box-Leaved Honeysuckle	#2 pot	24" o.c.	
18	Symphoricarpos albus	Snowberry	#2 Pot	36" o.c.	
<b>LOW SHRUBS</b>					
15	Gaultheria shallon	Salal	#2 pot	24" o.c.	
33	Cornus sericea 'Yalesey'	Dwarf Red Osier Dogwood	#2 pot	24" o.c.	
53	Mahonia nervosa	Dwarf Oregon Grape	#2 pot	24" o.c.	
71	Fothergilla gardenii	Dwarf Fothergilla	#1 pot	18" o.c.	
57	Sarcococca hookeriana 'Humilis'	Himalayan Sweet Box	#2 pot	18" o.c.	
55	Spiraea betulifolia var. lucida	White Spirea	#2 pot	36" o.c.	
56	Rhododendron 'Ken Janek'	Ken Janek Rhododendron	#5 pot	24" o.c.	
23	Blechnum spicant	Deer Fern	#1 Pot	18" o.c.	
26	Polystichum munizum	Western Sword Fern	#1 pot	24" o.c.	
<b>GROUNDCOVERS</b>					
147	Arctostaphylos uva-ursi	Kinnikinnick	4"(10cm) pot	18" o.c.	
199	Fragaria chiloensis	Beach Strawberry	4" (10cm) Pot	15" o.c.	
228	Pachysandra terminalis	Japanese Spurge	4" (10cm) Pot	15" o.c.	
<b>PERENNIALS</b>					
56	Carex obovata	Slough Sedge	#1 Pot	18" o.c.	
93	Stipa tenuissima	Mexican Feather Grass	#1 Pot	18" o.c.	
<b>SOD LAWN</b>					
		sq. m. sod			

NATIVE PLANTS
 DROUGHT TOLERANT PLANTS
 POLLINATOR FRIENDLY PLANTS
 SEASONAL INTEREST PLANTS
 FOOD RESOURCE PLANTS
 HABITAT VALUE PLANTS
 EVERGREEN PLANTS

David Stoyko  
Landscape Architect

2886 6TH AVENUE EAST  
VANCOUVER, BC V6M 1R3  
PH: 604.273.8448

DAVID STOYKO LANDSCAPE ARCHITECT DOES NOT GUARANTEE THE ACCURACY, LOCATION, AND EXTENSION OF ANY ELEMENT AT THE PROJECT SITE, INCLUDING UTILITIES AND/OR CONSTRUCTION STRUCTURES, OR THE ACCURACY OF ANY INFORMATION PROVIDED FROM OTHER CONSULTANTS OR SOURCES. THE CONTRACTOR IS RESPONSIBLE FOR VERIFYING ALL SITE CONDITIONS.

THESE DRAWINGS HAVE BEEN PREPARED FOR THE CLIENT FOR THE PROJECT AND SHOULD NOT BE USED OTHERWISE WITHOUT PERMISSION.

DO NOT SCALE OFF OF THESE DRAWINGS. NO RESPONSIBILITY CAN BE TAKEN WITH ANY ERRORS BY MEASURING OFF OF THESE DRAWINGS.

NOT FOR CONSTRUCTION



12
11
10
9
8 ISSUED FOR ADP 2405-07
7 ISSUED FOR ADP 2404-24
6 ISSUED FOR DP 2403-04
5 ISSUED FOR COORDINATION 2403-01
4 ISSUED FOR REVIEW 2402-16
3 ISSUED FOR CP'D REVIEW 2402-02
2 ISSUED FOR REVIEW 2402-01
1 ISSUED FOR PRELIMINARY REVIEW 23-12-22

REVISIONS



200<sup>TH</sup> STREET & 53<sup>RD</sup> AVENUE

5302 200<sup>th</sup> Street & 20011-31 53<sup>rd</sup> Avenue  
Langley, British Columbia

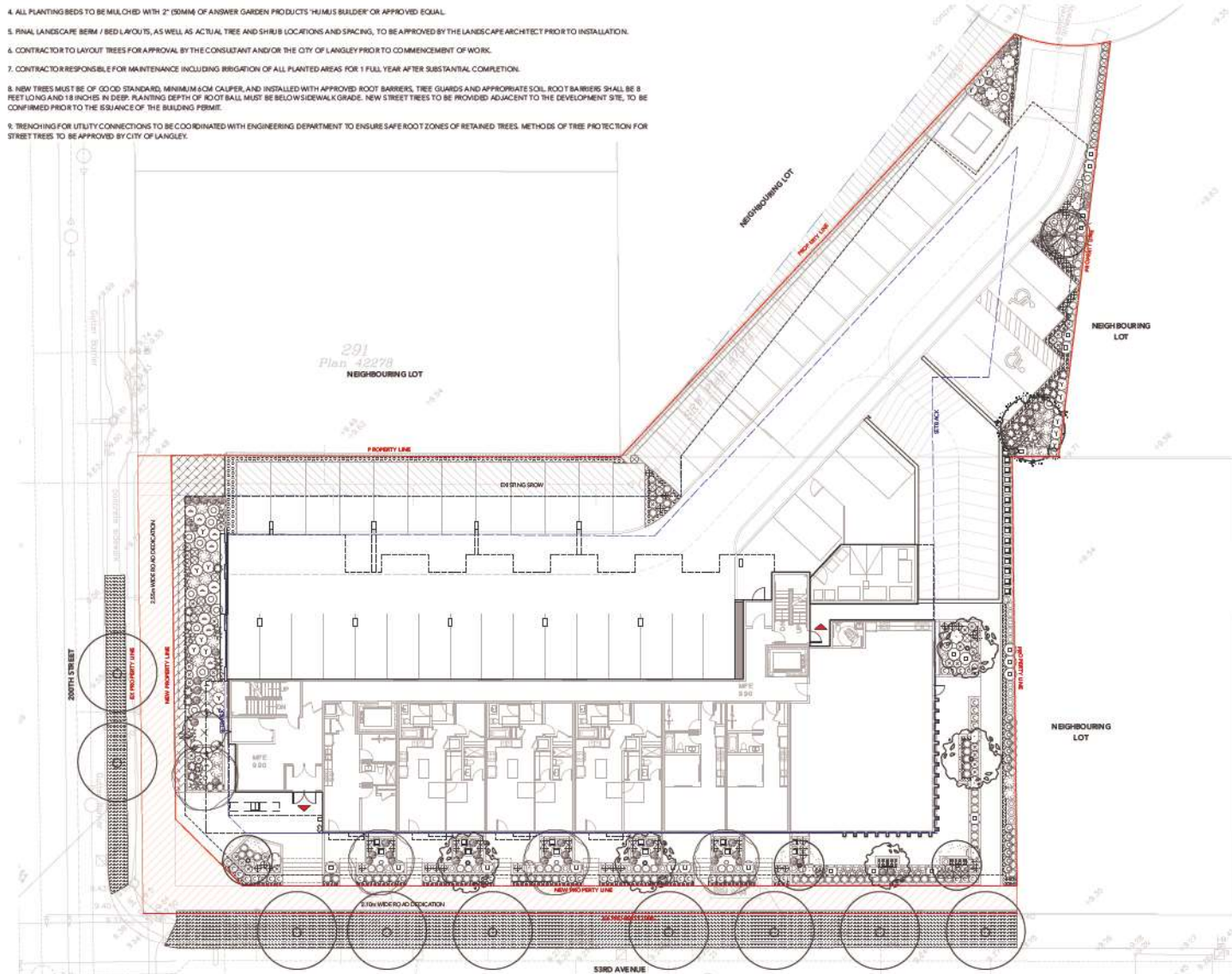
Scale:
Drawn: MGC
Reviewed: DS
Project No. 22-017

PLANTING CONCEPT



**PLANTING NOTES**

1. IN CASE OF DISCREPANCY BETWEEN PLANT NUMBERS ON THIS LIST AND ON THE PLAN, THE LATTER SHALL PREVAIL.
2. ALL PLANTING SHALL MEET OR EXCEED THE REQUIREMENTS AS OUTLINED IN THE CANADIAN LANDSCAPE STANDARD, LATEST EDITION.
3. ALL PLANTING PLANS TO BE READ IN CONJUNCTION WITH THE LANDSCAPE DETAILS AND SPECIFICATIONS.
4. ALL PLANTING BEDS TO BE MULCHED WITH 2" (50MM) OF ANSWER GARDEN PRODUCTS 'HUMUS BUILDER' OR APPROVED EQUAL.
5. FINAL LANDSCAPE BERM / BED LAYOUTS, AS WELL AS ACTUAL TREE AND SHRUB LOCATIONS AND SPACING, TO BE APPROVED BY THE LANDSCAPE ARCHITECT PRIOR TO INSTALLATION.
6. CONTRACTOR TO LAYOUT TREES FOR APPROVAL BY THE CONSULTANT AND/OR THE CITY OF LANGLEY PRIOR TO COMMENCEMENT OF WORK.
7. CONTRACTOR RESPONSIBLE FOR MAINTENANCE INCLUDING IRRIGATION OF ALL PLANTED AREAS FOR 1 FULL YEAR AFTER SUBSTANTIAL COMPLETION.
8. NEW TREES MUST BE OF GOOD STANDARD, MINIMUM 4CM CALIPER, AND INSTALLED WITH APPROVED ROOT BARRIERS, TREE GUARDS AND APPROPRIATE SOIL. ROOT BARRIERS SHALL BE 8 FEET LONG AND 18 INCHES IN DEEP. PLANTING DEPTH OF ROOT BALL MUST BE BELOW SIDEWALK GRADE. NEW STREET TREES TO BE PROVIDED ADJACENT TO THE DEVELOPMENT SITE, TO BE CONFIRMED PRIOR TO THE ISSUANCE OF THE BUILDING PERMIT.
9. TRENCHING FOR UTILITY CONNECTIONS TO BE COORDINATED WITH ENGINEERING DEPARTMENT TO ENSURE SAFE ROOT ZONES OF RETAINED TREES. METHODS OF TREE PROTECTION FOR STREET TREES TO BE APPROVED BY CITY OF LANGLEY.



**1 Planting Plan - Ground**  
Scale: 1:150



**David Stoyko**  
Landscape Architect

2886 6TH AVENUE EAST  
VANCOUVER BC V6M 1R3  
PH: 604.203.8448

DAVID STOYKO LANDSCAPE ARCHITECT DOES NOT GUARANTEE THE EXISTENCE, LOCATION, AND ELEVATION OF ANY ELEMENT AT THE PROJECT SITE, INCLUDING UTILITIES AND/OR CONVEYANCE STRUCTURES, OR THE ACCURACY OF ANY INFORMATION PROVIDED FROM OTHER CONSULTANTS OR SOURCES. THE CONTRACTOR IS RESPONSIBLE FOR VERIFYING ALL SITE CONDITIONS.

THESE DRAWINGS HAVE BEEN PROVIDED FOR THE CLIENT FOR THIS PROJECT AND SHOULD NOT BE USED OTHERWISE WITHOUT PERMISSION.

DO NOT SCALE OFF OF THESE DRAWINGS. NO RESPONSIBILITY CAN BE TAKEN WITH ANY ERRORS BY MEASURING OFF OF THESE DRAWINGS.

**NOT FOR CONSTRUCTION**



12	
11	
10	
9	
8	ISSUED FOR ADP 2405-07
7	ISSUED FOR ADP 2404-24
6	ISSUED FOR DP 2403-01
5	ISSUED FOR COORDINATION 2403-01
4	ISSUED FOR REVIEW 2402-16
3	ISSUED FOR CP'ED REVIEW 2402-02
2	ISSUED FOR REVIEW 2402-01
1	ISSUED FOR PRELIMINARY REVIEW 23-12-22
REVISIONS	



**200<sup>TH</sup> STREET & 53<sup>RD</sup> AVENUE**

5302 200<sup>th</sup> Street & 20011-31 53<sup>rd</sup> Avenue  
Langley, British Columbia

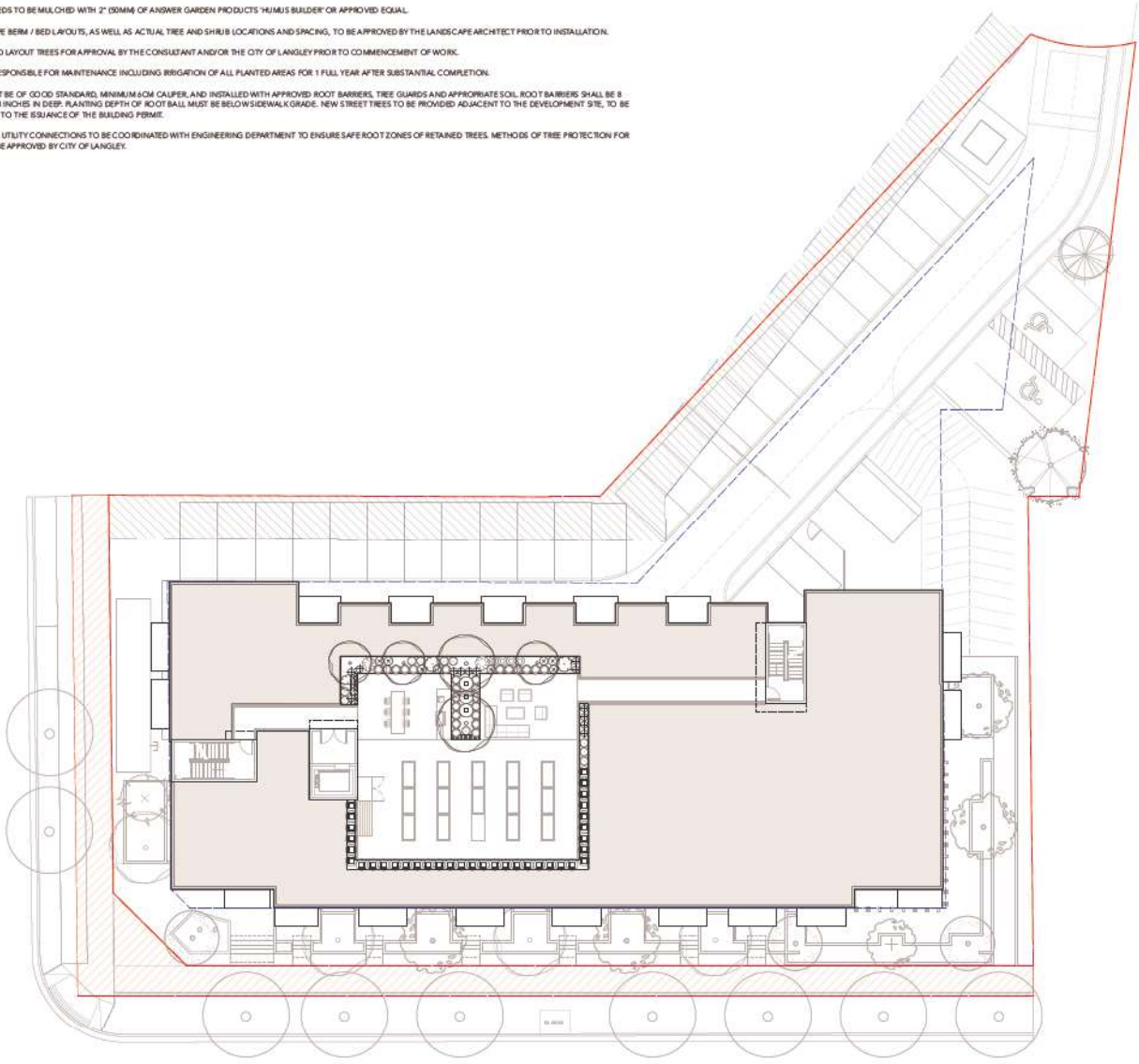
Scale:	1:150
Drawn:	MGC
Reviewed:	DS
Project No.:	22-017

**PLANTING PLAN - LEVEL 1**

**L3.1**

**PLANTING NOTES**

1. IN CASE OF DISCREPANCY BETWEEN PLANT NUMBERS ON THIS LIST AND ON THE PLAN, THE LATTER SHALL PREVAIL.
2. ALL PLANTING SHALL MEET OR EXCEED THE REQUIREMENTS AS OUTLINED IN THE CANADIAN LANDSCAPE STANDARD, LATEST EDITION.
3. ALL PLANTING PLANS TO BE READ IN CONJUNCTION WITH THE LANDSCAPE DETAILS AND SPECIFICATIONS.
4. ALL PLANTING BEDS TO BE MULCHED WITH 2" (50MM) OF ANSWER GARDEN PRODUCTS 'HUMUS BUILDER' OR APPROVED EQUAL.
5. FINAL LANDSCAPE BERM / BED LAYOUTS, AS WELL AS ACTUAL TREE AND SHRUB LOCATIONS AND SPACING, TO BE APPROVED BY THE LANDSCAPE ARCHITECT PRIOR TO INSTALLATION.
6. CONTRACTOR TO LAYOUT TREES FOR APPROVAL BY THE CONSULTANT AND/OR THE CITY OF LANGLEY PRIOR TO COMMENCEMENT OF WORK.
7. CONTRACTOR RESPONSIBLE FOR MAINTENANCE INCLUDING IRRIGATION OF ALL PLANTED AREAS FOR 1 FULL YEAR AFTER SUBSTANTIAL COMPLETION.
8. NEW TREES MUST BE OF GOOD STANDARD, MINIMUM 4CM CALIPER, AND INSTALLED WITH APPROVED ROOT BARRIERS, TREE GUARDS AND APPROPRIATE SOIL ROOT BARRIERS SHALL BE 8 FEET LONG AND 18 INCHES IN DEEP. PLANTING DEPTH OF ROOT BALL MUST BE BELOW SIDEWALK GRADE. NEW STREET TREES TO BE PROVIDED ADJACENT TO THE DEVELOPMENT SITE, TO BE CONFIRMED PRIOR TO THE ISSUANCE OF THE BUILDING PERMIT.
9. TRENCHING FOR UTILITY CONNECTIONS TO BE COORDINATED WITH ENGINEERING DEPARTMENT TO ENSURE SAFE ROOT ZONES OF RETAINED TREES. METHODS OF TREE PROTECTION FOR STREET TREES TO BE APPROVED BY CITY OF LANGLEY.



1 Planting Plan - Roof  
Scale: 1:150



**David Stoyko**  
Landscape Architect

2886 6TH AVENUE EAST  
VANCOUVER, BC V6M 1R3  
PH: 604.203.8448

DAVID STOYKO LANDSCAPE ARCHITECT DOES NOT GUARANTEE THE EXISTENCE, LOCATION, AND ELEVATION OF ANY ELEMENT AT THE PROJECT SITE, INCLUDING UTILITIES AND / OR CONVEYANCE STRUCTURES, OR THE ACCURACY OF ANY INFORMATION PROVIDED FROM OTHER CONSULTANTS OR SOURCES. THE CONTRACTOR IS RESPONSIBLE FOR VERIFYING ALL SITE CONDITIONS.

THESE DRAWINGS HAVE BEEN PREPARED FOR THE CLIENT FOR THIS PROJECT AND SHOULD NOT BE USED OTHERWISE WITHOUT PERMISSION.

DO NOT SCALE OFF OF THESE DRAWINGS. NO RESPONSIBILITY CAN BE TAKEN WITH ANY ERRORS BY MEASURING OFF OF THESE DRAWINGS.

NOT FOR CONSTRUCTION



12	
11	
10	
9	
8	ISSUED FOR ADP 2405-07
7	ISSUED FOR ADP 2404-24
6	ISSUED FOR DP 2403-01
5	ISSUED FOR COORDINATION 2403-01
4	ISSUED FOR REVIEW 2402-16
3	ISSUED FOR CP/ED REVIEW 2402-02
2	ISSUED FOR REVIEW 2402-01
1	ISSUED FOR PRELIMINARY REVIEW 23-12-22
REVISIONS	



**200<sup>TH</sup> STREET & 53<sup>RD</sup> AVENUE**

5302 200<sup>th</sup> Street & 20011-31 53<sup>rd</sup> Avenue  
Langley, British Columbia

Scale:	1:150
Drawn:	MGC
Reviewed:	DS
Project No.:	22-017

PLANTING PLAN -  
ROOF LEVEL

DAVID STOYKO LANDSCAPE ARCHITECT DOES NOT GUARANTEE THE ACCURACY, LOCATION, AND ELEVATION OF ANY ELEMENT AT THE PROJECT SITE, INCLUDING UTILITIES AND / OR CONCEALED STRUCTURES, OR THE ACCURACY OF ANY INFORMATION PROVIDED FROM OTHER CONSULTANTS OR SOURCES. THE CONTRACTOR IS RESPONSIBLE FOR VERIFYING ALL SITE CONDITIONS.

THESE DRAWINGS HAVE BEEN PREPARED FOR THE CLIENT FOR THIS PROJECT AND SHOULD NOT BE USED OTHERWISE WITHOUT PERMISSION.

DO NOT SCALE OFF OF THESE DRAWINGS. NO RESPONSIBILITY CAN BE TAKEN WITH ANY ERRORS BY MEASURING OFF OF THESE DRAWINGS.

NOT FOR CONSTRUCTION



12	
11	
10	
9	
8	ISSUED FOR ADP 2405-07
7	ISSUED FOR ADP 2404-24
6	ISSUED FOR DP 2403-01
5	ISSUED FOR COORDINATION 2403-01
4	ISSUED FOR REVIEW 2402-16
3	ISSUED FOR CP'D REVIEW 2402-02
2	ISSUED FOR REVIEW 2402-01
1	ISSUED FOR PRELIMINARY REVIEW 23-12-22
REVISIONS	



200<sup>TH</sup> STREET & 53<sup>RD</sup>  
AVENUE

5302 200<sup>th</sup> Street & 20011-31 53<sup>rd</sup>  
Avenue  
Langley, British Columbia

Scale:	1:150
Drawn:	MGC
Reviewed:	DS
Project No.:	22-017

LIGHTING PLAN -  
LEVEL 1

L4.0

LIGHTING LEGEND

SYMBOL	DESCRIPTION
	UPLIGHT
	WALL LIGHT
	BOLLARD LIGHT
	LED STRIP LIGHT
	METAL PLANTER-MOUNTED LIGHT

NOTE:  
LIGHTING PLAN PROVIDED FOR INFORMATION ONLY. ELECTRICAL ENGINEER TO DESIGN SITE LIGHTING AND PROVIDE SPECS AND QUANTITIES DURING BUILDING PERMIT APPLICATION.



1 Lighting Plan - Ground  
Scale: 1:150



**David Stoyko**  
Landscape Architect

2886 6TH AVENUE EAST  
VANCOUVER BC V6M 1R3  
PH: 604.273.8448

DAVID STOYKO LANDSCAPE ARCHITECT DOES NOT GUARANTEE THE EXISTENCE, LOCATION, AND ELEVATION OF ANY ELEMENT AT THE PROJECT SITE, INCLUDING UTILITIES AND / OR CONCEALED STRUCTURES, OR THE ACCURACY OF ANY INFORMATION PROVIDED FROM OTHER CONSULTANTS OR SOURCES. THE CONTRACTOR IS RESPONSIBLE FOR VERIFYING ALL SITE CONDITIONS.

THESE DRAWINGS HAVE BEEN PROVIDED FOR THE CLIENT FOR THE PROJECT AND SHOULD NOT BE USED OTHERWISE WITHOUT PERMISSION.

DO NOT SCALE OFF OF THESE DRAWINGS. NO RESPONSIBILITY CAN BE TAKEN WITH ANY ERRORS BY MEASURING OFF OF THESE DRAWINGS.

NOT FOR CONSTRUCTION



12	
11	
10	
9	
8	ISSUED FOR ADP 2405-07
7	ISSUED FOR ADP 2404-24
6	ISSUED FOR DP 2403-01
5	ISSUED FOR COORDINATION 2403-01
4	ISSUED FOR REVIEW 2402-16
3	ISSUED FOR CPED REVIEW 2402-02
2	ISSUED FOR REVIEW 2402-01
1	ISSUED FOR PRELIMINARY REVIEW 23-12-22

REVISIONS



**200<sup>TH</sup> STREET & 53<sup>RD</sup> AVENUE**

5302 200<sup>th</sup> Street & 20011-31 53<sup>rd</sup> Avenue  
Langley, British Columbia

Scale:	1:150
Drawn:	MGC
Reviewed:	DS
Project No.	22-017

**LIGHTING PLAN - ROOF LEVEL**

L4.1

**LIGHTING LEGEND**

SYMBOL	DESCRIPTION
	UPLIGHT
	WALLLIGHT
	BOLLARD LIGHT
	LED STRIP LIGHT
	METAL PLANTER-MOUNTED LIGHT

NOTE:  
LIGHTING PLAN PROVIDED FOR INFORMATION ONLY. ELECTRICAL ENGINEER TO DESIGN SITE LIGHTING AND PROVIDE SPECS AND QUANTITIES DURING BUILDING PERMIT APPLICATION.



1 **Lighting Plan - Roof**  
Scale: 1:150

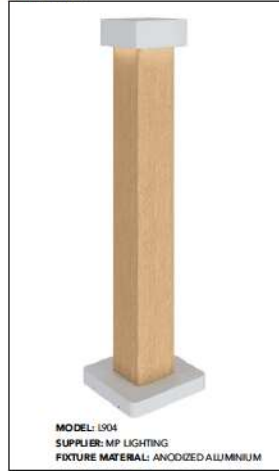


# LIGHTING MATERIALITY

## WALL LIGHT



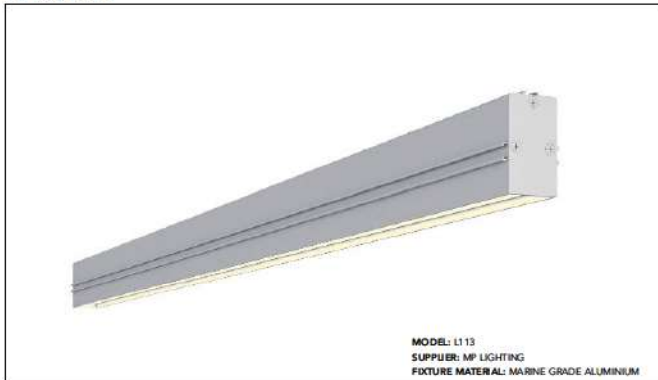
## BOLLARD



## PLANTER LIGHT



## LINEAR LIGHT



## UP LIGHT



David Stoyko  
 Landscape Architect

2884 6TH AVENUE EAST  
 VANCOUVER, BC V6M 1R3  
 PH: 604.203.8488

DAVID STOYKO LANDSCAPE ARCHITECT DOES NOT GUARANTEE THE EXISTENCE, LOCATION, AND DIMENSION OF ANY ELEMENT AT THE PROJECT SITE, INCLUDING UTILITIES AND/OR CONCEALED STRUCTURES. ON THE ACCURACY OF ANY INFORMATION FROM OLD FROM OTHER CONSULTANTS OR SOURCES. THE CONTRACTOR IS RESPONSIBLE FOR VERIFYING ALL SITE CONDITIONS.

THESE DRAWINGS HAVE BEEN PROVIDED FOR THE CLIENT FOR THE PROJECT AND SHOULD NOT BE USED OTHERWISE WITHOUT PERMISSION.

DO NOT SCALE OFF OF THESE DRAWINGS. NO RESPONSIBILITY CAN BE TAKEN WITH ANY CROSS BY MEASURING OFF OF THE DRAWINGS.

NOT FOR CONSTRUCTION



12	
11	
10	
9	
8	ISSUED FOR ADP 21.05.07
7	ISSUED FOR ADP 24.04.24
6	ISSUED FOR DP 24.03.04
5	ISSUED FOR COORDINATION 24.03.01
4	ISSUED FOR REVIEW 24.02.16
3	ISSUED FOR CPED REVIEW 24.02.02
2	ISSUED FOR REVIEW 24.02.01
1	ISSUED FOR PRELIMINARY REVIEW 23.12.22

REVISIONS



200<sup>TH</sup> STREET & 53<sup>RD</sup>  
 AVENUE

5302 200<sup>th</sup> Street & 20011-31 53<sup>rd</sup>  
 Avenue  
 Langley, British Columbia

Scale:	NTS
Drawn:	MGC
Reviewed:	DS
Project No.	22-017

LIGHTING  
 MATERIALITY

DAVID STOYKO LANDSCAPE ARCHITECT DOES NOT GUARANTEE THE EXISTENCE, LOCATION, AND ELEVATION OF ANY ELEMENT AT THE PROJECT SITE, INCLUDING UTILITIES AND/OR CONCEALED STRUCTURES, OR THE ACCURACY OF ANY INFORMATION PROVIDED FROM OTHER CONSULTANTS OR SOURCES. THE CONTRACTOR IS RESPONSIBLE FOR VERIFYING ALL SITE CONDITIONS.

THESE DRAWINGS HAVE BEEN PROVIDED FOR THE CLIENT FOR THE PROJECT AND SHOULD NOT BE USED OTHERWISE WITHOUT PERMISSION.

DO NOT SCALE OFF OF THESE DRAWINGS. RESPONSIBILITY CAN BE TAKEN WITH ANY ERRORS BY MEASURING OFF OF THESE DRAWINGS.

NOT FOR CONSTRUCTION



DSK

12	
11	
10	
9	
8	ISSUED FOR ADP 2405-07
7	ISSUED FOR ADP 2404-24
6	ISSUED FOR DP 2403-01
5	ISSUED FOR COORDINATION 2403-01
4	ISSUED FOR REVIEW 2402-16
3	ISSUED FOR CP'ED REVIEW 2402-02
2	ISSUED FOR REVIEW 2402-01
1	ISSUED FOR PRELIMINARY REVIEW 23-12-22
REVISIONS	



200<sup>TH</sup> STREET & 53<sup>RD</sup> AVENUE

5302 200<sup>th</sup> Street & 20011-31 53<sup>rd</sup> Avenue  
Langley, British Columbia

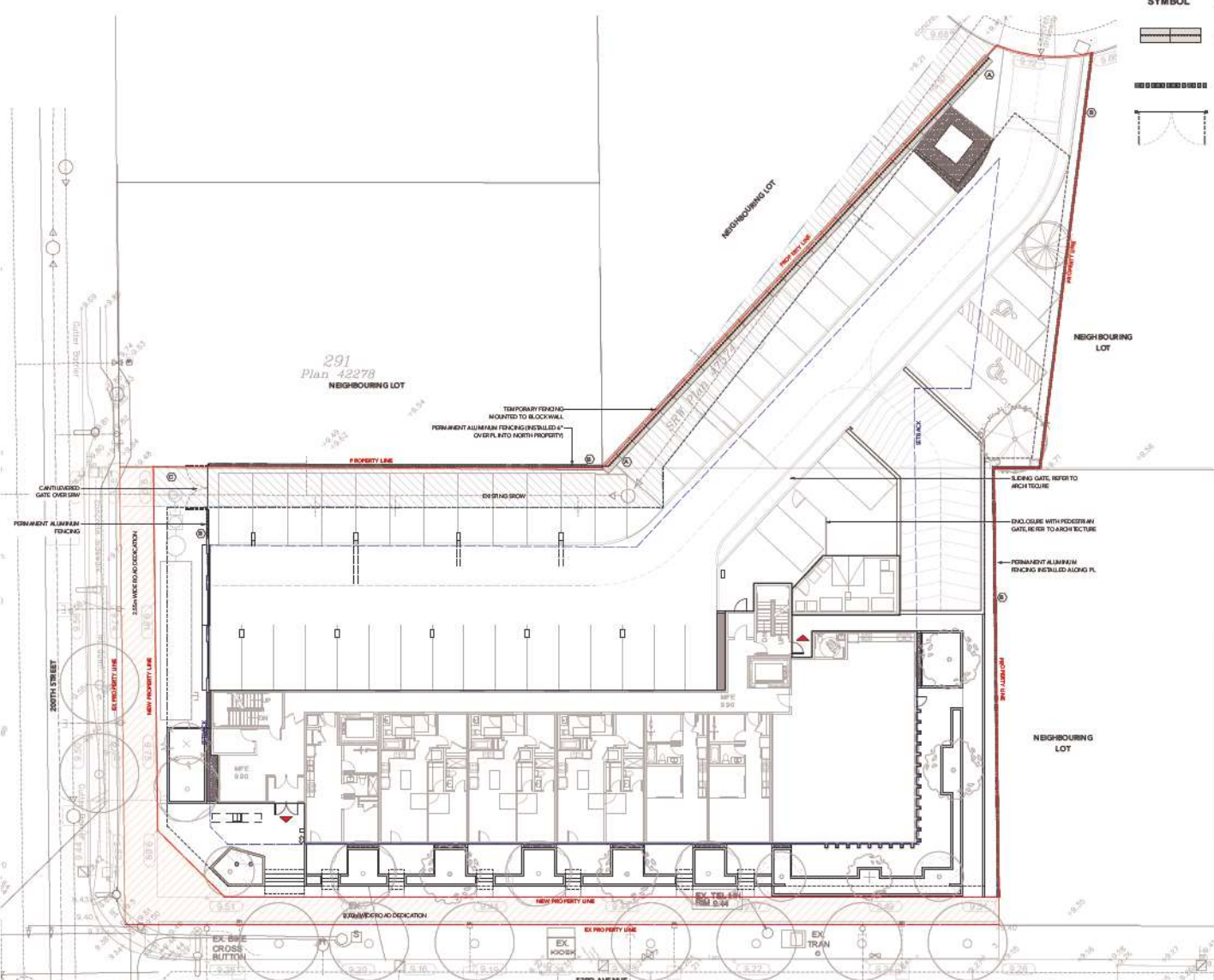
Scale:	
Drawn:	PP
Reviewed:	DS
Project No.:	22-017

FENCING PLAN - LEVEL 1

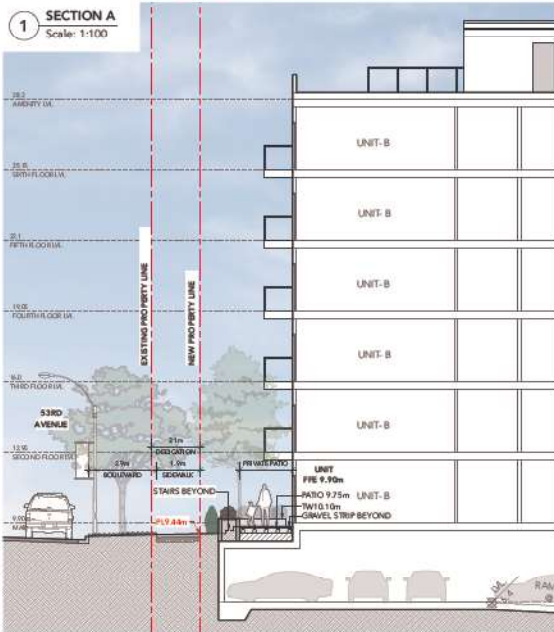
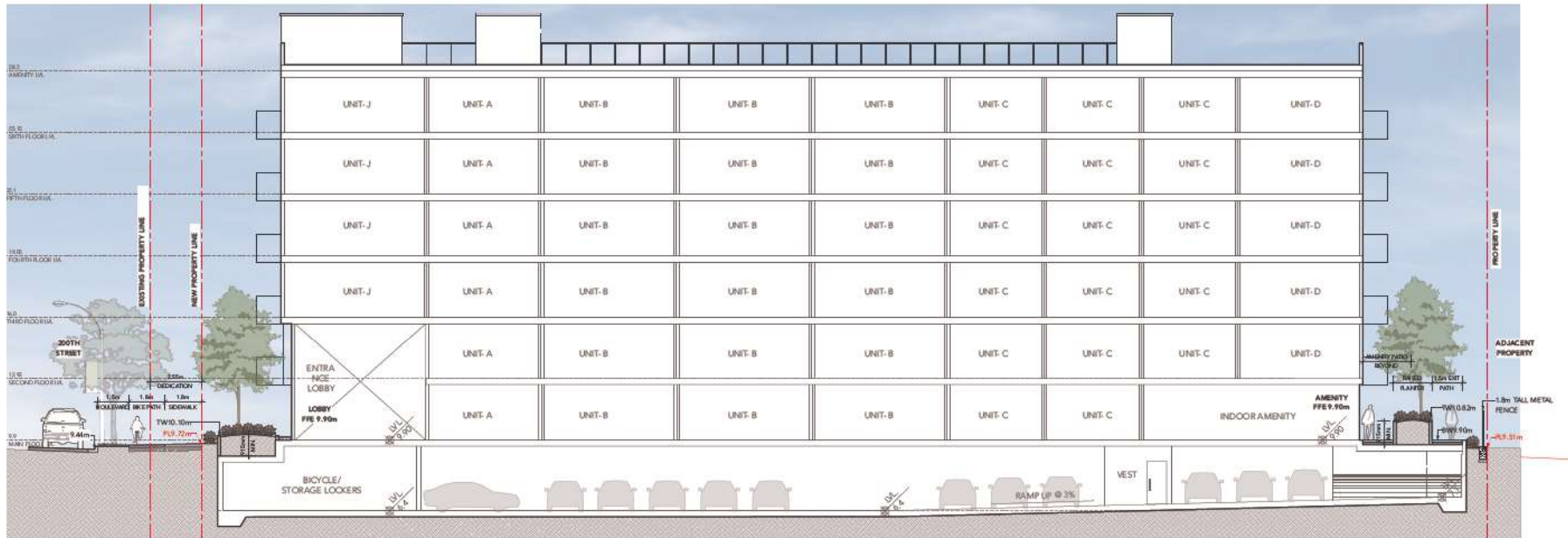
L4.3

FENCING LEGEND

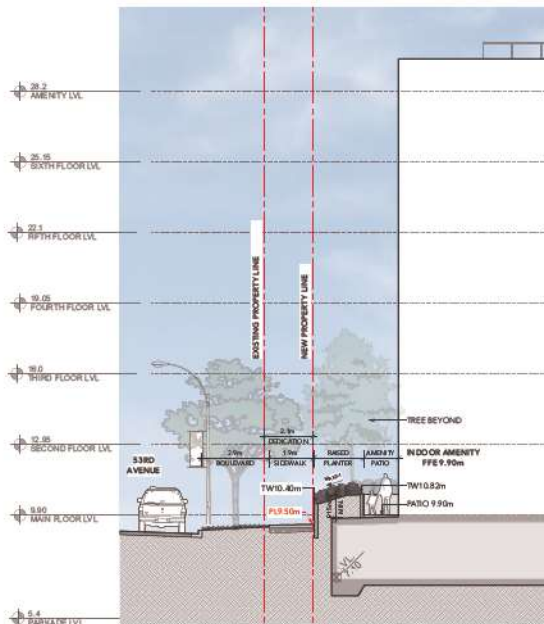
SYMBOL	KEY	DETAIL	DESCRIPTION
	A		ALUMINUM FENCE MOUNTED TO NO-POST BARRIERS PER PLANS AND DETAILS
	B		ALUMINUM FENCE ON GRADE PER PLANS AND DETAILS
	C		GATE PER PLANS AND DETAILS



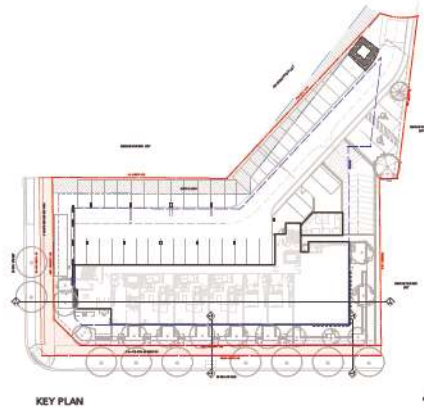
1 Landscape Plan - Ground  
Scale: 1:150



**2 SECTION B**  
Scale: 1:100



**3 SECTION C**  
Scale: 1:100



**David Stoyko**  
Landscape Architect  
2886 6TH AVENUE EAST  
VANCOUVER BC V6M 1R3  
PH: 720.0848

DAVID STOYKO LANDSCAPE ARCHITECT DOES NOT GUARANTEE THE EXISTENCE, LOCATION, AND ELEVATION OF ANY ELEMENT AT THE PROJECT SITE, INCLUDING UTILITIES AND/OR CONCEALED STRUCTURES, OR THE ACCURACY OF ANY INFORMATION PROVIDED FROM OTHER CONSULTANTS OR SOURCES. THE CONTRACTOR IS RESPONSIBLE FOR VERIFYING ALL SITE CONDITIONS.

THESE DRAWINGS HAVE BEEN PROVIDED FOR THE CLIENT FOR THE PROJECT AND SHOULD NOT BE USED OTHERWISE WITHOUT PERMISSION.

DO NOT SCALE OFF OF THESE DRAWINGS. NO RESPONSIBILITY CAN BE TAKEN WITH ANY ERRORS BY MEASURING OFF OF THESE DRAWINGS.

NOT FOR CONSTRUCTION



12	
11	
10	
9	
8	ISSUED FOR ADP 2405-07
7	ISSUED FOR ADP 2404-24
6	ISSUED FOR DP 2403-01
5	ISSUED FOR COORDINATION 2403-01
4	ISSUED FOR REVIEW 2402-16
3	ISSUED FOR CP'D REVIEW 2402-02
2	ISSUED FOR REVIEW 2402-01
1	ISSUED FOR PRELIMINARY REVIEW 23-12-22

REVISIONS

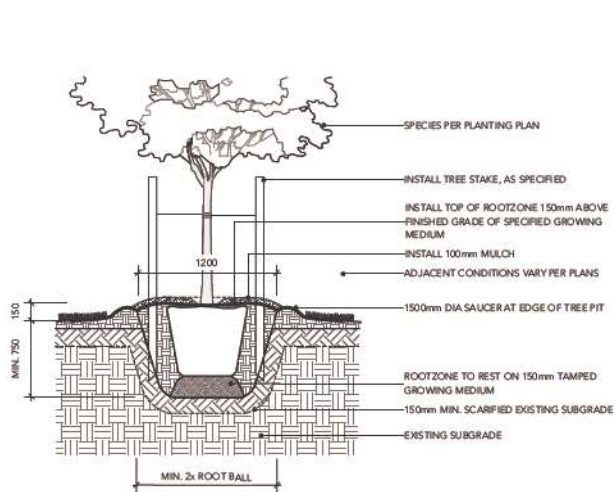


**200<sup>TH</sup> STREET & 53<sup>RD</sup> AVENUE**  
5302 200<sup>th</sup> Street & 20011-31 53<sup>rd</sup> Avenue  
Langley, British Columbia

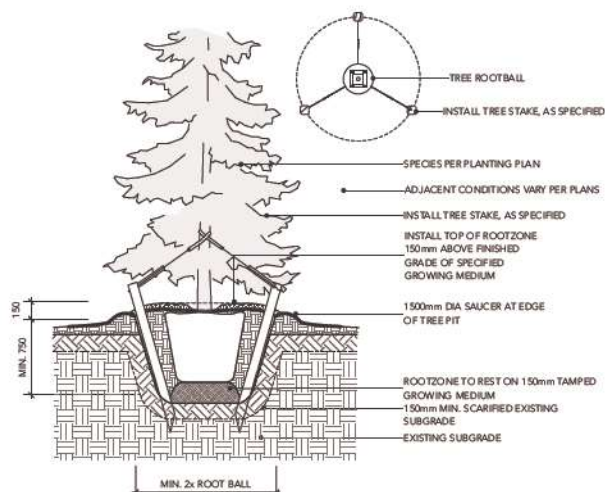
Scale:	
Drawn:	PP
Reviewed:	DS
Project No.:	22-017

SECTIONS

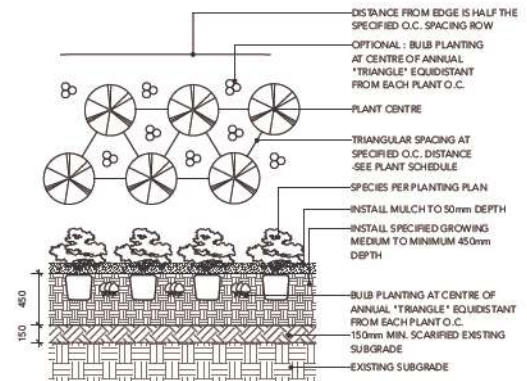
L5.0



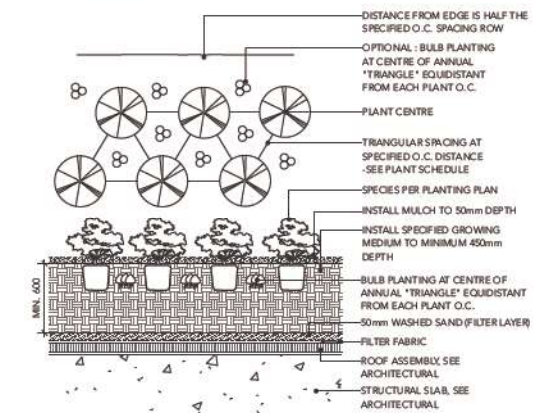
1 DECIDUOUS TREE PLANTING ON GRADE (TYPICAL)  
Scale: 1:20



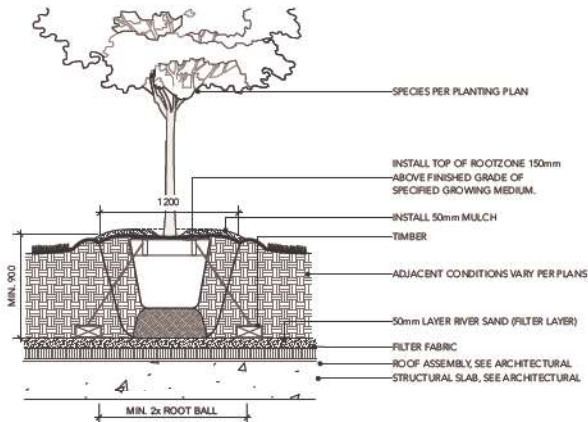
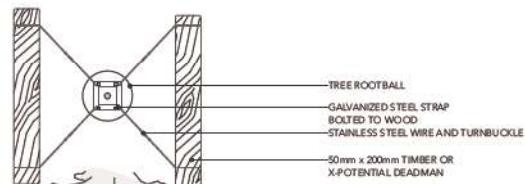
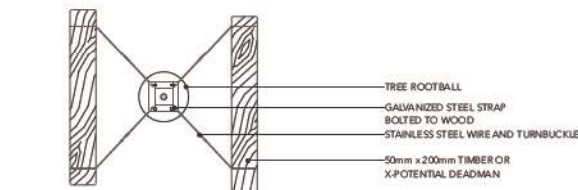
3 CONIFEROUS TREE PLANTING ON GRADE (TYPICAL)  
Scale: 1:20



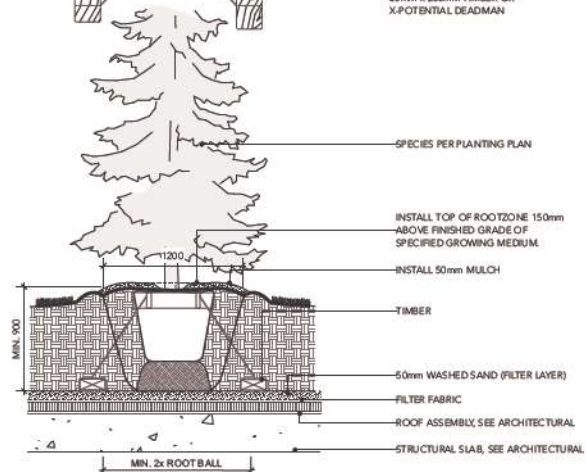
5 PLANTING ON GRADE (TYPICAL)  
Scale: 1:20



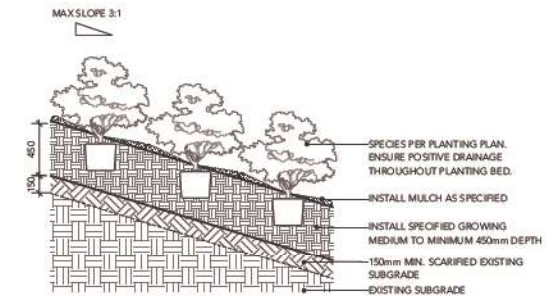
6 PLANTING ON SLAB (TYPICAL)  
Scale: 1:20



2 DECIDUOUS TREE PLANTING ON SLAB (TYPICAL)  
Scale: 1:20



4 CONIFEROUS TREE PLANTING ON SLAB (TYPICAL)  
Scale: 1:20



7 PLANTING ON SLOPE (TYPICAL)  
Scale: 1:20

DAVID STOYKO LANDSCAPE ARCHITECT DOES NOT GUARANTEE THE ACCURACY, LOCATION, AND DEPTH OF ANY ELEMENT AT THE PROJECT SITE, INCLUDING UTILITIES AND/OR CONCEALED STRUCTURES, OR THE ACCURACY OF ANY INFORMATION PROVIDED FROM OTHER CONSULTANTS OR SOURCES. THE CONTRACTOR IS RESPONSIBLE FOR VERIFYING ALL SITE CONDITIONS.

THESE DRAWINGS HAVE BEEN PREPARED FOR THE CLIENT BY THE PROJECT ARCHITECT AND SHOULD NOT BE USED OR REPRODUCED WITHOUT PERMISSION.

DO NOT SCALE OFF OF THESE DRAWINGS. NO RESPONSIBILITY CAN BE TAKEN WITH ANY ERRORS BY MEASURING OFF OF THESE DRAWINGS.

NOT FOR CONSTRUCTION



12	
11	
10	
9	
8	ISSUED FOR ADP 24-05-07
7	ISSUED FOR ADP 24-04-24
6	ISSUED FOR DP 24-03-04
5	ISSUED FOR COORDINATION 24-03-01
4	ISSUED FOR REVIEW 24-02-16
3	ISSUED FOR OPTED REVIEW 24-02-02
2	ISSUED FOR REVIEW 24-02-01
1	ISSUED FOR PRELIMINARY REVIEW 23-12-22
REVISIONS	



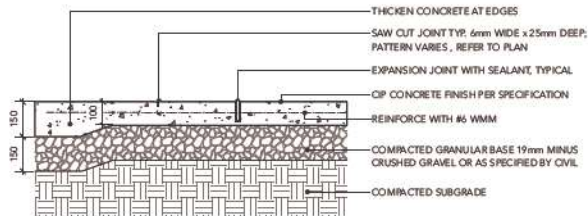
200<sup>TH</sup> STREET & 53<sup>RD</sup> AVENUE

5302 200<sup>th</sup> Street & 2011-31 53<sup>rd</sup> Avenue  
Langley, British Columbia

Scale:  
Drawn:  
Reviewed: DS  
Project No. 22-017

DETAILS - PLANTING

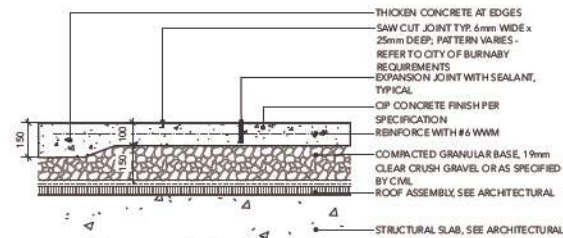




**NOTES:**  
 1. EXPANSION JOINTS 6m O.C. MAX. CONTROL JOINTS @ 1.5m O.C. ADJUST TO SUIT SITE LAYOUT PLAN.  
 2. ALL SCORELINES TO BE APPROVED BY LANDSCAPE ARCHITECT ON-SITE PRIOR TO INSTALLATION.

**1 CIP CONCRETE ON GRADE (TYPICAL)**

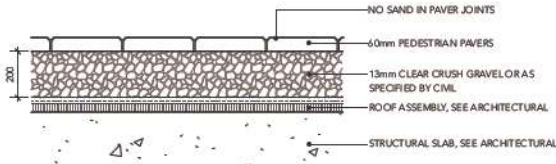
Scale: 1:10



**NOTES:**  
 1. EXPANSION JOINTS 6m O.C. MAX. CONTROL JOINTS @ 1.5m O.C. ADJUST TO SUIT SITE LAYOUT PLAN.  
 2. ALL SCORELINES TO BE APPROVED BY LANDSCAPE ARCHITECT ON-SITE PRIOR TO INSTALLATION.

**2 CIP CONCRETE ON SLAB (TYPICAL)**

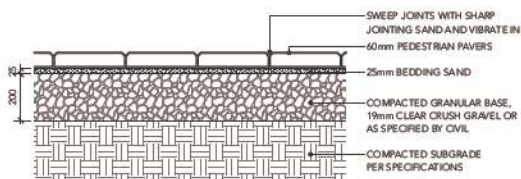
Scale: 1:10



**NOTE:**  
 USE CONCRETE HIDDEN EDGE RESTRAINT WHEN PAVERS ARE NOT ADJACENT TO A SOLID EDGE CONDITION.

**3 PEDESTRIAN UNIT PAVERS ON SLAB (TYPICAL)**

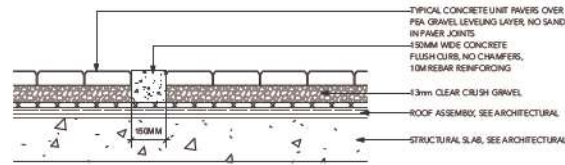
Scale: 1:10



**NOTE:**  
 USE CONCRETE HIDDEN EDGE RESTRAINT WHEN PAVERS ARE NOT ADJACENT TO A SOLID EDGE CONDITION.

**4 PEDESTRIAN UNIT PAVERS ON GRADE (TYPICAL)**

Scale: 1:10



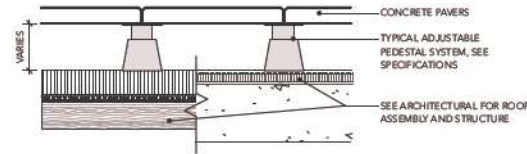
**5 CIP PAVES EDGE BAND**

Scale: 1:10

**SLAB PAVERS (TYPE 1)**  
 TYPE: TEXADA SLAB PAVERS  
 SIZE: 24"x24" (610MM X 610MM X 50MM)  
 PATTERN: GRID  
 COLOUR: NATURAL  
 MANUFACTURER: BELGARD (1.800.663.4091).

**SLAB PAVERS (TYPE 2)**  
 TYPE: TEXADA SLAB PAVERS  
 SIZE: 12"x24" (305MM X 610MM X 50MM)  
 PATTERN: RUNNING BOND  
 COLOUR: NATURAL  
 MANUFACTURER: BELGARD (1.800.663.4091).

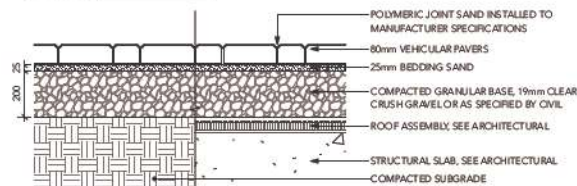
**SLAB PAVERS (TYPE 3)**  
 TYPE: TEXADA SLAB PAVERS  
 SIZE: 12"x24" (305MM X 610MM X 50MM)  
 PATTERN: RUNNING BOND  
 COLOUR: CHARCOAL  
 MANUFACTURER: BELGARD (1.800.663.4091).



**6 HYDRAPRESSED CONCRETE PAVERS ON PEDESTALS**

Scale: 1:10

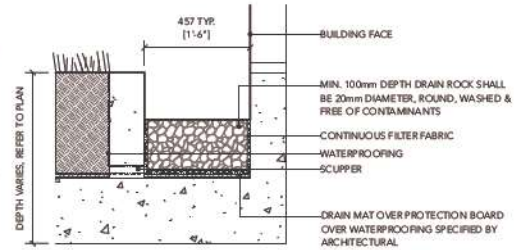
**HOLLAND PAVERS**  
 SIZE: 210mm x 102mm x 80mm  
 COLOUR: 50% NATURAL, 50% SIERRA GREY  
 PATTERN: HERRING BONE  
 SUPPLIED BY BARKMAN CONCRETE (1.778.689.7670).



**NOTE:**  
 USE CONCRETE HIDDEN EDGE RESTRAINT WHEN PAVERS ARE NOT ADJACENT TO A SOLID EDGE CONDITION.

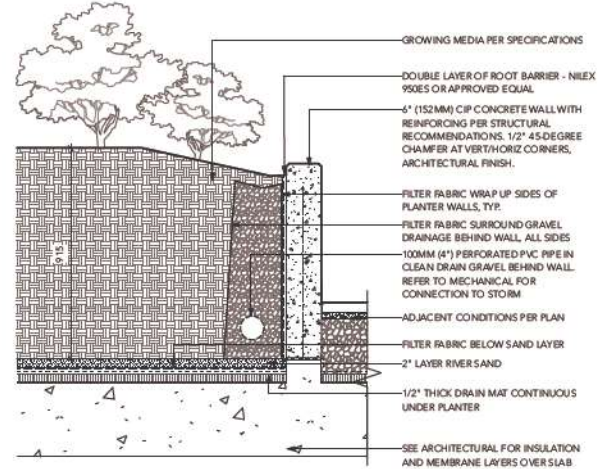
**7 VEHICULAR CONCRETE UNIT PAVERS (TYPICAL)**

Scale: 1:10



**8 GRAVEL DRAIN STRIP - ON SLAB**

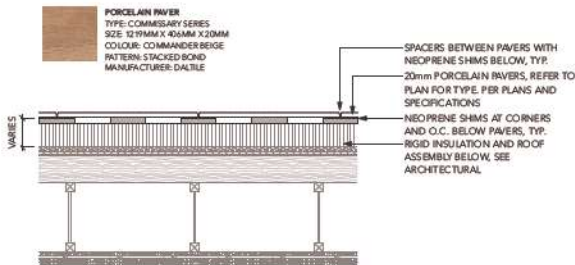
Scale: 1:10



**NOTE:**  
 1. WALLS MAX 600MM HIGHT. GUARDRAIL REQUIRED WHERE WALL HEIGHTS EXCEED 600mm.

**9 TYPICAL RETAINING WALL ON SLAB**

Scale: 1:10



**NOTE:**  
 1. TYPICAL ADJUSTABLE PEDESTAL SYSTEM TO BE USED WHERE DEPTH EXCEEDS HIGHT FOR SHIMS. SEE SPECIFICATIONS.

**10 PORCELAIN PAVERS**

Scale: 1:10

DAVID STOYKO LANDSCAPE ARCHITECT DOES NOT GUARANTEE THE METHOD, LOCATION, AND EXTENT OF ANY ELEMENT AT THE PROJECT SITE. INCLUDING UTILITIES AND/OR CONCEALED STRUCTURES, OR THE ACCURACY OF ANY INFORMATION OBTAINED FROM OTHER CONSULTANTS OR SOURCES. THE CONTRACTOR IS RESPONSIBLE FOR VERIFYING ALL SITE CONDITIONS.

THESE DRAWINGS HAVE BEEN PREPARED FOR THE CLIENT BY THE PROJECT ARCHITECT AND SHOULD NOT BE USED WITHOUT THE WRITTEN PERMISSION.

DO NOT SCALE OFF THESE DRAWINGS. NO RESPONSIBILITY CAN BE ASSUMED WITH ANY ERRORS BY MEASURING OFF OF THESE DRAWINGS.

NOT FOR CONSTRUCTION



12	
11	
10	
9	
8	ISSUED FOR ADP 24-05-07
7	ISSUED FOR ADP 24-04-24
6	ISSUED FOR DP 24-03-04
5	ISSUED FOR COORDINATION 24-03-01
4	ISSUED FOR REVIEW 24-02-16
3	ISSUED FOR OPTED REVIEW 24-02-02
2	ISSUED FOR REVIEW 24-02-01
1	ISSUED FOR PRELIMINARY REVIEW 23-12-22
REVISIONS	

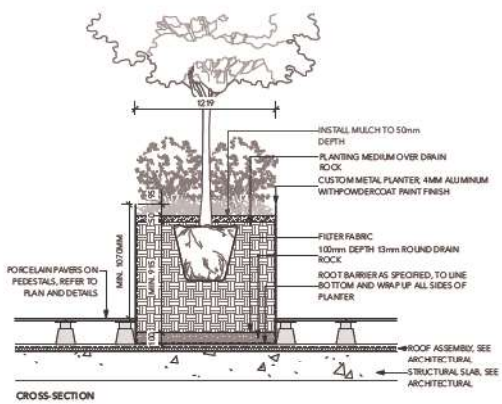


200<sup>TH</sup> STREET & 53<sup>RD</sup> AVENUE

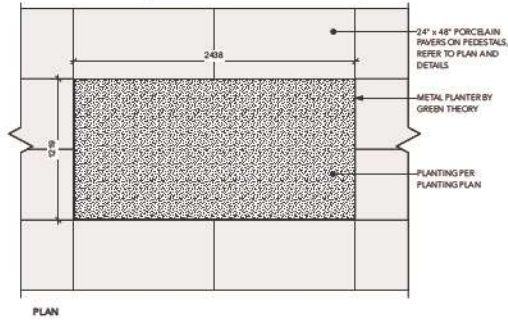
5302 200<sup>th</sup> Street & 20011-31 53<sup>rd</sup> Avenue  
 Langley, British Columbia

Scale:  
 Drawn:  
 Reviewed: DS  
 Project No. 22-017

DETAILS -  
 HARDSCAPE

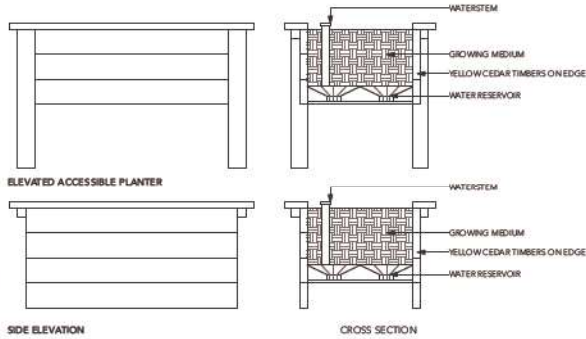
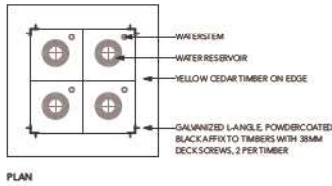


**GREEN THEORY RAISED METAL PLANTER**  
 COLOUR : GREY  
 MATERIAL: METAL  
 SIZE: 3' H X 4' W X 8' L  
 SUPPLIED BY GREEN THEORY (604) 475-7002



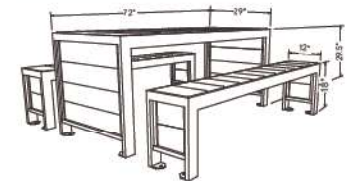
**1 GREEN THEORY METAL PLANTER**  
 Scale: 1:20

**HERBLOOM SELF-WATERING PLANTER**  
 COLOUR : TBD  
 SUPPLIER: LIFESPACE GARDENS



**4 URBAN AGRICULTURE PLANTER BY LIFESAPCE**  
 Scale: 1:20

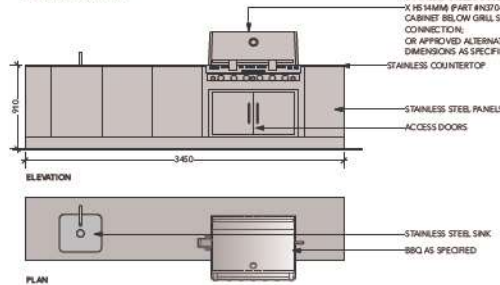
**URBAN FARM HARVEST PICNIC TABLE**  
 COLOUR : SILVER / GREY  
 SUPPLIER: WISHBONE (604-626-0476)



**7 HARVEST TABLE AND SEATING**  
 Scale: 1:20

CUSTOM BBQ ISLAND PROVIDED AND INSTALLED BY SHERWOOD OUTDOOR KITCHENS CONTACT: 778-855-4872 OR APPROVED ALTERNATE

BUILT-IN BBQ GRILL: NAPOLEON LEX 616S BUILT-IN NATURAL GAS GRILL WITH SEARING BURNER & INFRARED REAR BURNER WITH NAPOLEON STAINLESS STEEL DOUBLE DOOR (LARGE W/95MM X 154MM PART #N2P-D0503) CABINET BELOW GRILL SURFACE - GAS CONNECTION, DIMENSIONS AS SPECIFIED BY MANUFACTURER OR APPROVED ALTERNATE.



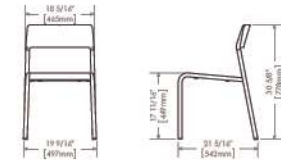
**NOTE:**

- MANUAL SHUT OFF VALVE TO BE PROVIDED FOR GAS BARBECUE CONNECTION.
- BARBECUE GRILL TO BE INSTALLED AS PER MANUFACTURERS INSTRUCTION.
- REFER TO MECHANICAL DRAWINGS FOR GAS CONNECTIONS.
- CONTRACTOR AND STRUCTURAL TO PROVIDE SHOP DRAWINGS FOR LANDSCAPE CONSULTANT REVIEW AND APPROVAL PRIOR TO FABRICATION OF CUSTOM COUNTER AND BARBECUE ELEMENTS.

**8 BBQ AND COUNTER**  
 Scale: 1:25



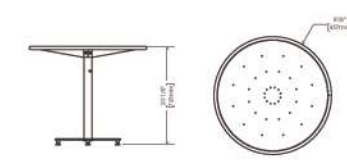
**FORO SERIES**  
 MCH-1700-00001  
 CHAIRS  
 COLOUR : STANDARD SILVER  
 SUPPLIER: MAGLIN SITE FURNISHINGS



**2 BISTRO CHAIR**  
 Scale: 1:20



**FORO SERIES**  
 MTB-1700-00746 36\"/>



**3 BISTRO TABLE**  
 Scale: 1:20



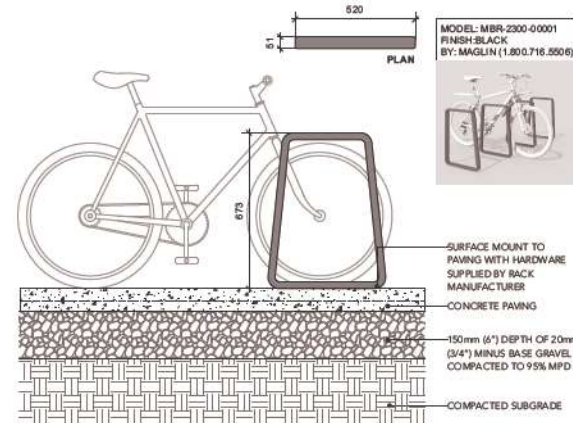
**MODEL: PLATFORM ONE COFFEE TABLE**  
 COLOUR: TBD  
 MANUFACTURER: LOLL DESIGNS (877-740-3387)  
 SUPPLIER: VANCOUVER SPECIAL (604-568-3673)

**5 OUTDOOR COFFEE TABLE**  
 Scale: 1:20



**MODEL: PLATFORM ONE MODULAR SOFA KIT OR APPROVED ALTERNATE**  
 COLOURS: TBD  
 MANUFACTURER: LOLL DESIGNS (877-740-3387)  
 SUPPLIER: VANCOUVER SPECIAL (604-568-3673)

**6 LOUNGE FURNITURE**  
 Scale: 1:20



**9 BIKE RACK**  
 Scale: 1:10

DAVID STOYKO LANDSCAPE ARCHITECT DOES NOT GUARANTEE THE EXTERIOR LOCATION AND ELEVATION OF ANY ELEMENT AT THE PROJECT SITE. THE LOCATION, UTILITIES AND/OR CONCEALED STRUCTURES OF THE ADJACENCY OF ANY INFORMATION PROVIDED FROM OTHER CONSULTANTS OR SOURCES. THE CONTRACTOR IS RESPONSIBLE FOR VERIFYING ALL SITE CONDITIONS.

THESE DRAWINGS HAVE BEEN PREPARED FOR THE CLIENT BY THE PROJECT ARCHITECT AND SHOULD NOT BE USED OTHERWISE WITHOUT PERMISSION.

DO NOT SCALE OFF OF THESE DRAWINGS. NO RESPONSIBILITY CAN BE TAKEN WITH ANY DIMENSIONS BY MEASURING OFF OF THESE DRAWINGS.

NOT FOR CONSTRUCTION



12	
11	
10	
9	
8	ISSUED FOR ADP 24-05-07
7	ISSUED FOR ADP 24-04-24
6	ISSUED FOR DP 24-03-04
5	ISSUED FOR COORDINATION 24-03-01
4	ISSUED FOR REVIEW 24-02-16
3	ISSUED FOR OPTED REVIEW 24-02-02
2	ISSUED FOR REVIEW 24-02-01
1	ISSUED FOR PRELIMINARY REVIEW 23-12-22
REVISIONS	



**200<sup>TH</sup> STREET & 53<sup>RD</sup> AVENUE**  
 5302 200<sup>th</sup> Street & 2011-1 53<sup>rd</sup> Avenue  
 Langley, British Columbia

Scale:  
 Drawn:  
 Reviewed: DS  
 Project No. 22-017

DETAILS - FURNISHINGS

DAVID STOYKO LANDSCAPE ARCHITECT DOES NOT GUARANTEE THE DISTANCE, LOCATION, AND DIRECTION OF ANY ELEMENT AT THE PROJECT SITE, INCLUDING UTILITIES AND/OR CONCRETE STRUCTURES, OR THE ACCURACY OF ANY INFORMATION PROVIDED FROM OTHER CONSULTANTS OR SOURCES. THE CONTRACTOR IS RESPONSIBLE FOR VERIFYING ALL SITE CONDITIONS.

THESE DRAWINGS HAVE BEEN PREPARED FOR THE CLIENT FOR THE PROJECT, AND SHOULD NOT BE USED OTHERWISE WITHOUT PERMISSION.

DO NOT SCALE OFF OF THESE DRAWINGS. NO RESPONSIBILITY CAN BE TAKEN WITH ANY ERRORS BY MEASURING OFF OF THESE DRAWINGS.

NOT FOR CONSTRUCTION



DSK

12	
11	
10	
9	
8	ISSUED FOR ADP 24-06-23
7	ISSUED FOR ADP 24-04-24
6	ISSUED FOR DP 24-03-04
5	ISSUED FOR COORDINATION 24-03-01
4	ISSUED FOR REVIEW 24-02-16
3	ISSUED FOR OPTED REVIEW 24-02-02
2	ISSUED FOR REVIEW 24-02-01
1	ISSUED FOR PRELIMINARY REVIEW 23-12-22

REVISIONS



200<sup>TH</sup> STREET & 53<sup>RD</sup>  
AVENUE

5302 200<sup>TH</sup> Street & 20011-31 53<sup>RD</sup>  
Avenue  
Langley, British Columbia

Scale: \_\_\_\_\_  
Drawn: \_\_\_\_\_  
Reviewed: DS  
Project No. 22-017

DETAILS -  
FURNISHINGS



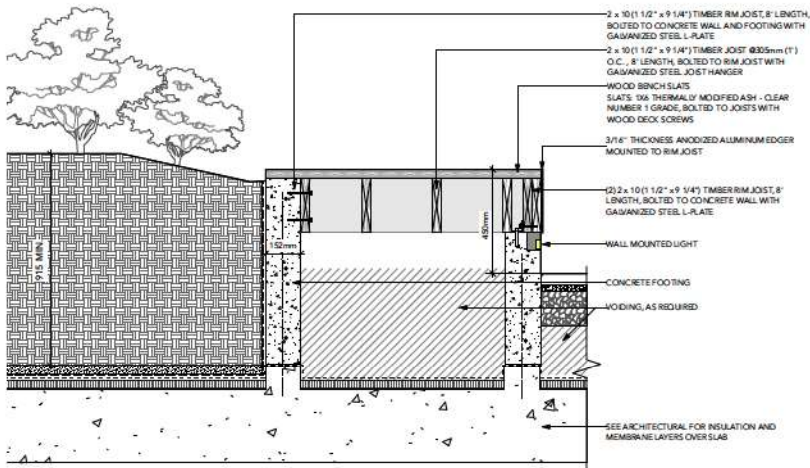
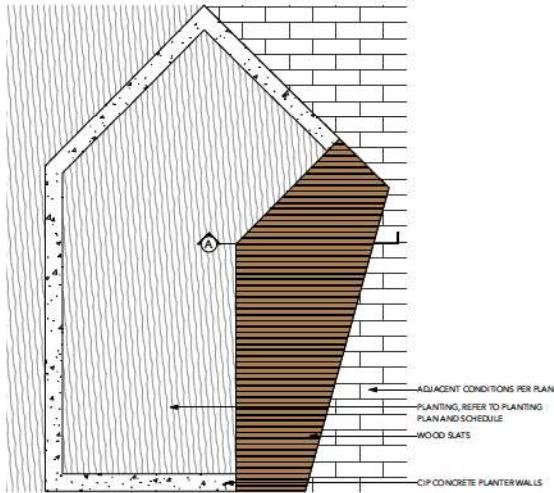
**MODEL:** WESTERN RED CEDAR GRAND GARDEN CHALET  
**MANUFACTURER:** OUTDOOR LIVING TODAY (888-658-1658)  
**SIZE:** 3'X6'  
**MATERIAL:** WESTERN RED CEDAR; PAINTED (COLOUR TBD)  
**SUPPLIER:** THE HOME DEPOT (1-800-468-1423) OR APPROVED ALTERNATE

**2 URBAN AGRICULTURE STORAGE SHED**  
Scale: NTS



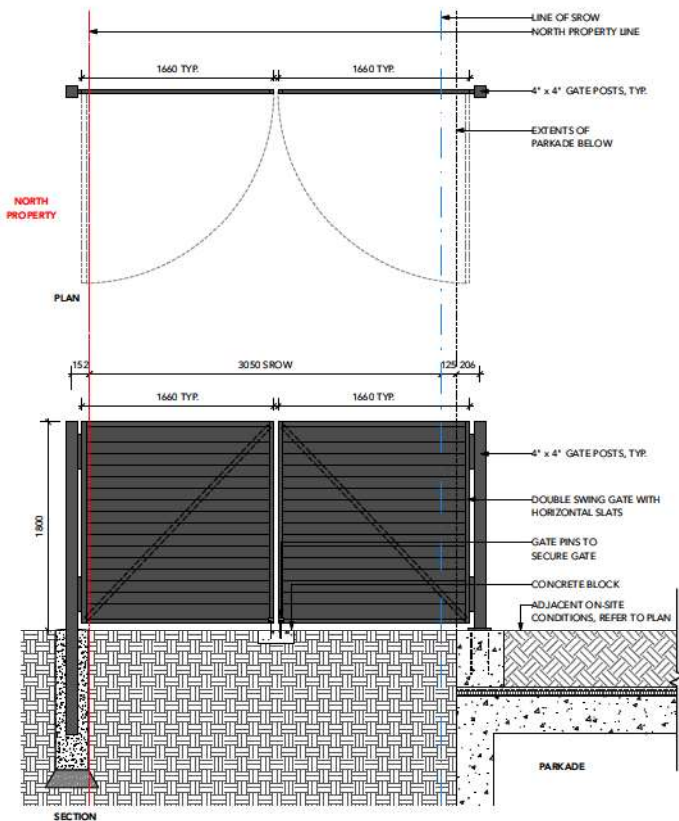
**HUTCH BACKLESS BENCH**  
**COLOUR:** SAND / BROWN SLATE  
**LENGTH:** 5 FT  
**WOOD:** MODIFIED PINE (NATURAL)  
**SUPPLIER:** WISHBONE (604-626-0476)

**3 BACKLESS BENCH**  
Scale: NTS



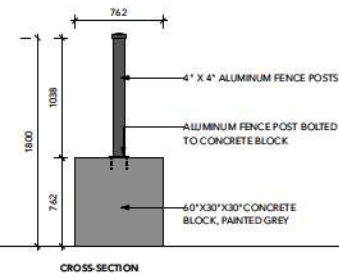
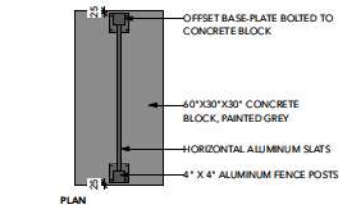
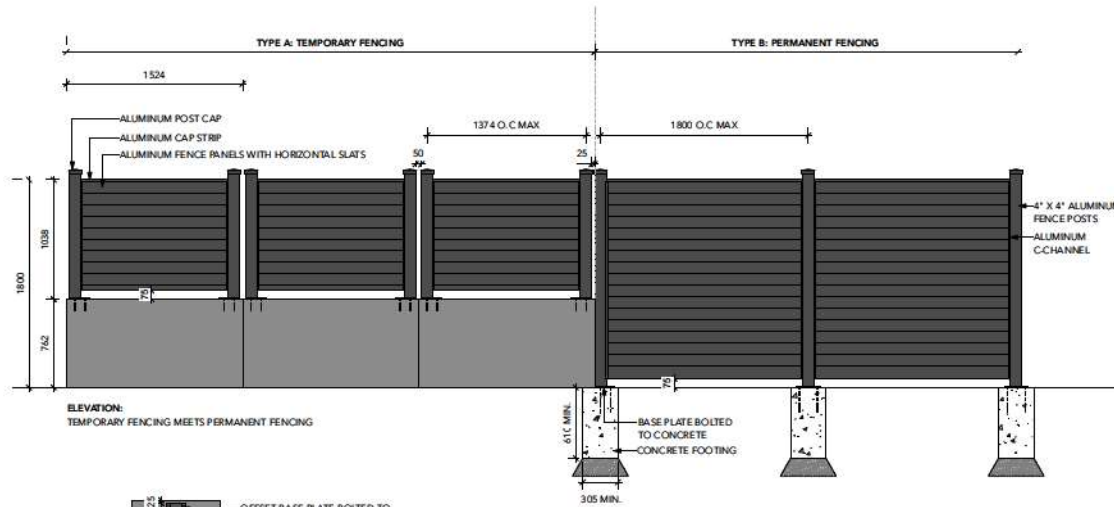
**NOTES:**  
1. DECKING TO BE 1x6 THERMALLY MODIFIED ASH - CLEAR NUMBER 1 GRADE  
2. PRE-DRILL HOLES FOR ALL SCREWS

**1 LOBBY ENTRY SEATING PLATFORM (SECTION A)**  
Scale: 1:10



- NOTE:**
1. PROVIDE SHOP DRAWINGS FOR REVIEW PRIOR TO CONSTRUCTION.
  2. ALL METAL COMPONENTS TO BE ALUMINUM WITH POWDER COAT FINISH, COLOUR TBD.
  3. PROVIDE ISOLATION MATERIAL FOR FASTENERS TO AVOID ELECTROLYSIS.

**1 CANTILEVERED GATE OVER SROW**  
Scale: 1:20



- NOTE:**
1. PROVIDE SHOP DRAWINGS FOR REVIEW PRIOR TO CONSTRUCTION.
  2. ALL METAL COMPONENTS TO BE ALUMINUM.
  3. PROVIDE ISOLATION MATERIAL FOR FASTENERS TO AVOID ELECTROLYSIS.
  4. COLOUR OF ALUMINUM FENCING TBD.
  5. APPLY A MINIMUM OF TWO COATS OF ANTI-GRAFFITI PAINT TO CONCRETE BLOCKS.
  6. REFER TO PLANS FOR FENCING TYPE LOCATIONS.

**2 ALUMINUM FENCE**  
Scale: 1:20



DAVID STOYKO LANDSCAPE ARCHITECT DOES NOT GUARANTEE THE DISTANCE, LOCATION, AND EXISTENCE OF ANY ELEMENT AT THE PROJECT SITE, INCLUDING UTILITIES AND/OR CONCEALED STRUCTURES, OR THE ACCURACY OF ANY INFORMATION PROVIDED FROM OTHER CONSULTANTS OR SOURCES. THE CONTRACTOR IS RESPONSIBLE FOR VERIFYING ALL SITE CONDITIONS.

THESE DRAWINGS HAVE BEEN PREPARED FOR THE CLIENT BY THE PROJECT ARCHITECT AND SHOULD NOT BE USED OTHERWISE WITHOUT PERMISSION.

DO NOT SCALE OFF THESE DRAWINGS. NO RESPONSIBILITY CAN BE TAKEN WITH ANY ERRORS BY MEASURING OFF OF THESE DRAWINGS.

**NOT FOR CONSTRUCTION**



12	
11	
10	
9	
8	ISSUED FOR ADP 24-06-24
7	ISSUED FOR ADP 24-04-24
6	ISSUED FOR DP 24-03-04
5	ISSUED FOR COORDINATION 24-03-01
4	ISSUED FOR REVIEW 24-02-16
3	ISSUED FOR OPTED REVIEW 24-02-02
2	ISSUED FOR REVIEW 24-02-01
1	ISSUED FOR PRELIMINARY REVIEW 23-12-22

REVISIONS



**200<sup>TH</sup> STREET & 53<sup>RD</sup> AVENUE**

5302 200<sup>th</sup> Street & 20011-31 53<sup>rd</sup> Avenue  
Langley, British Columbia

Scale:  
Drawn:  
Reviewed: DS  
Project No. 22-017

**DETAILS - FENCING**