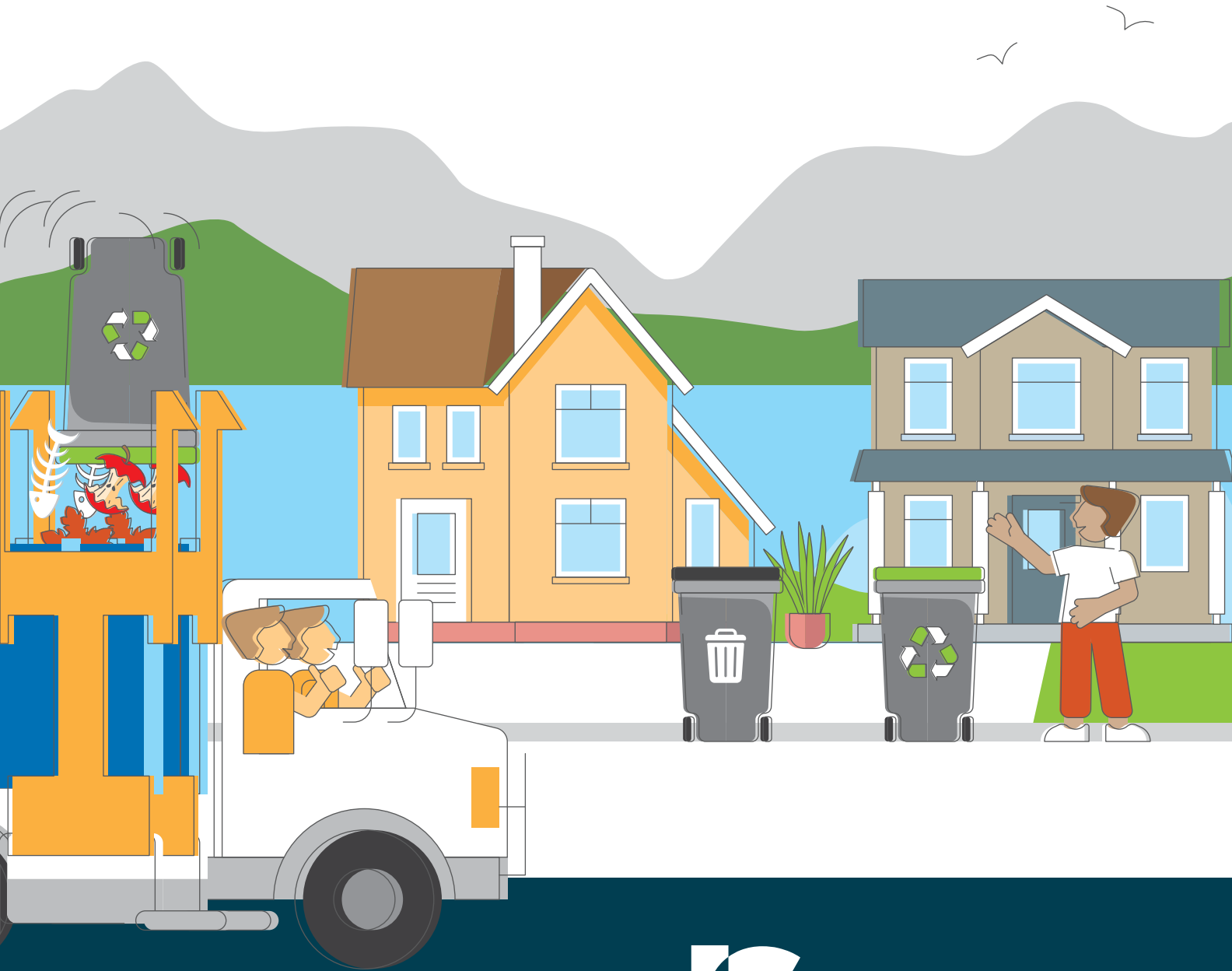


GARBAGE AND ORGANICS CART COLLECTION GUIDE

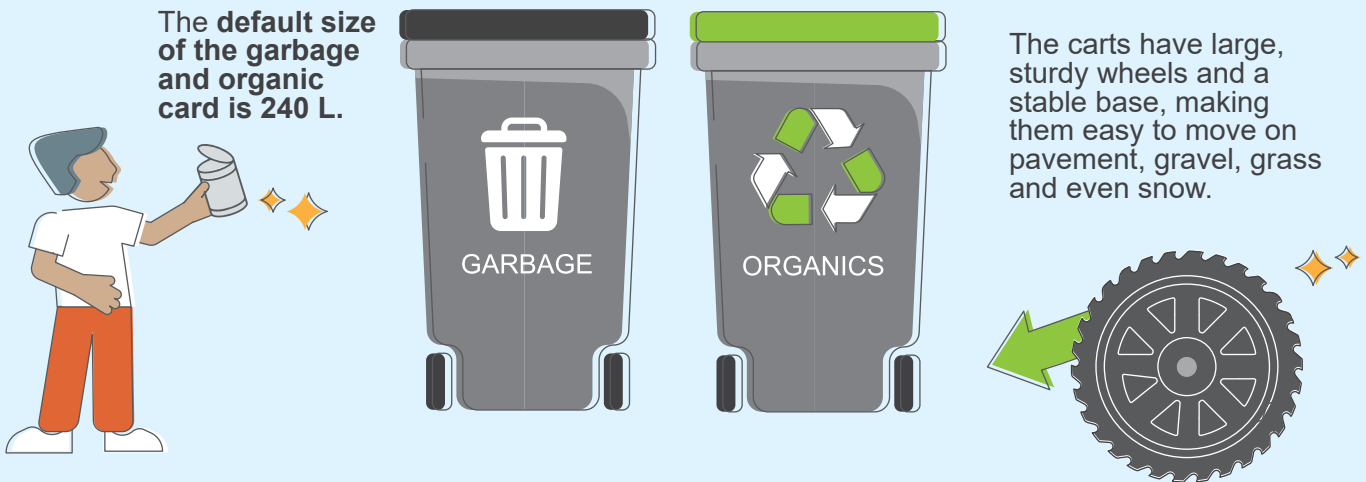


Automated Collection Program

Single-detached and non-strata town homes in Langley City receive one garbage cart and one organics cart.

Garbage collection is collected every other week
Organics collection is collected every week

There are three cart sizes: 120 L, 240 L, and 360 L



Set Out Your Carts Correctly

- Place all garbage and organics inside the correct cart.
- On collection day, lids must be fully closed.
- Overflowing carts or items on lids will not be collected.

Cart Tracking

- Each cart has an Radio Frequency Identification (RFID) tag and unique serial number linked to your property.
- This system helps confirm collection and monitor contamination.

City-Issued Carts Only

- Only carts provided by the City work with automated collection trucks.

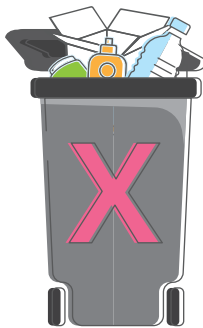
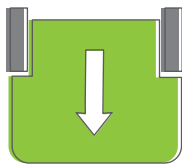
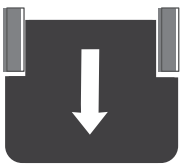
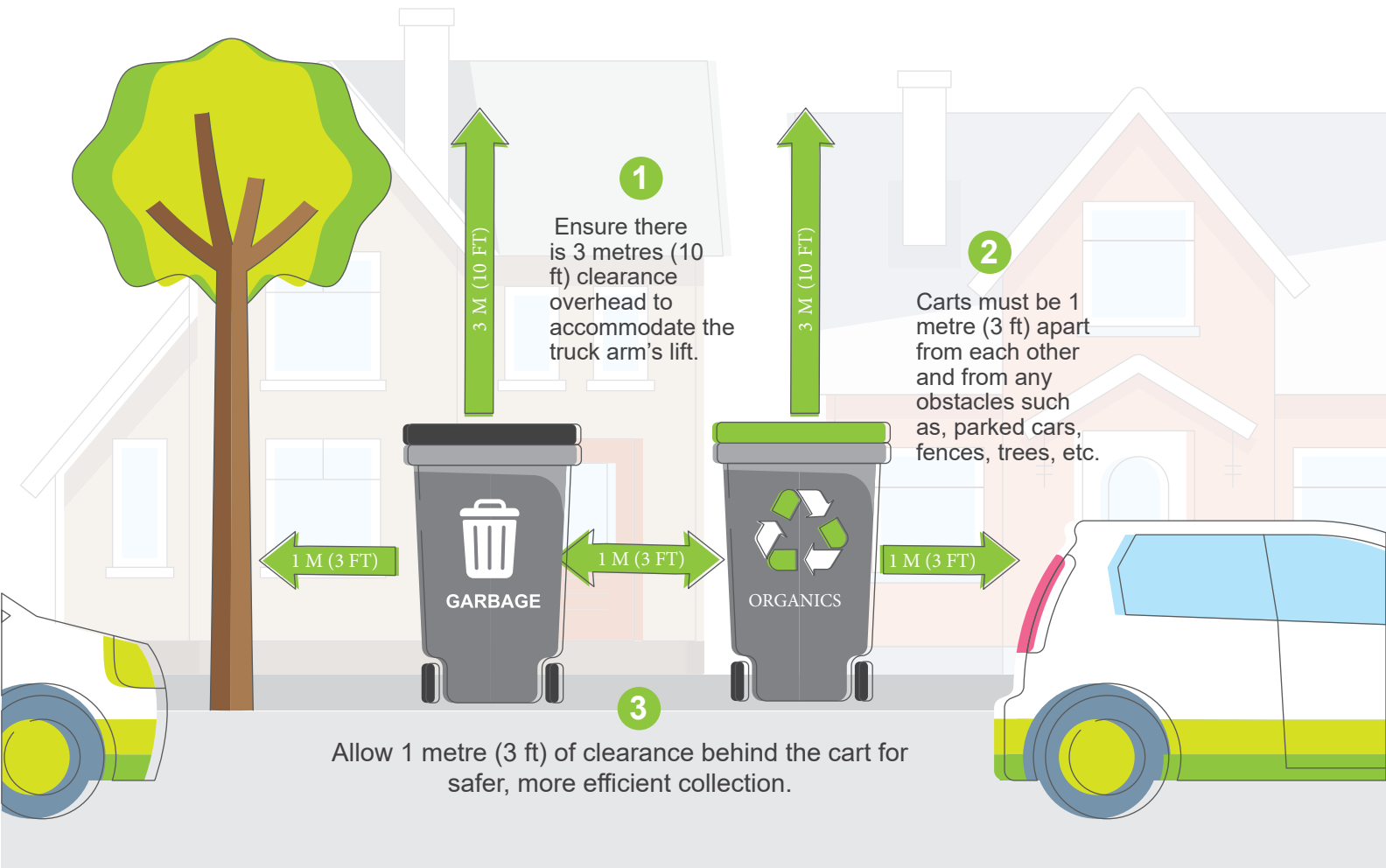
Cart Storage

- Store carts on your property (e.g., garage, backyard, shed, side of home, or front yard).
- Do not store carts on roads or sidewalks.



If you wish to change your cart size, email col@emterra.ca or call 604.635.0999.

Setting Out The Carts For Collection



4 Point the arrows on the cart lids towards the street with handles towards your house.

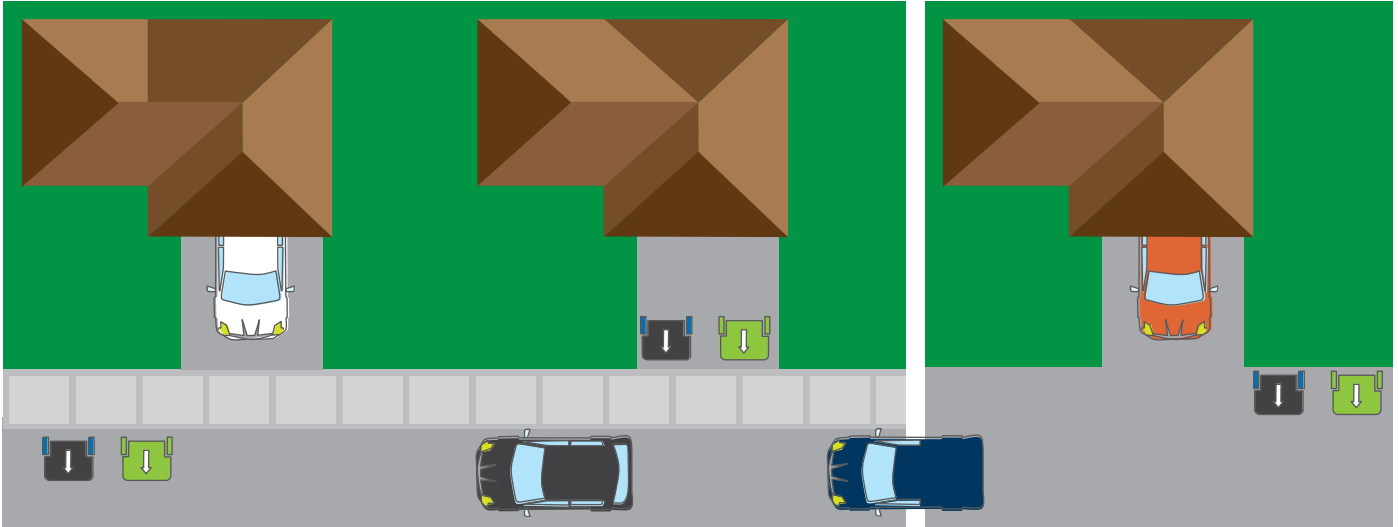
5 Ensure the lids can fully close and waste in not packed too tightly in the cart.

6 Carts must not obstruct sidewalks, bike lanes or the flow of traffic.



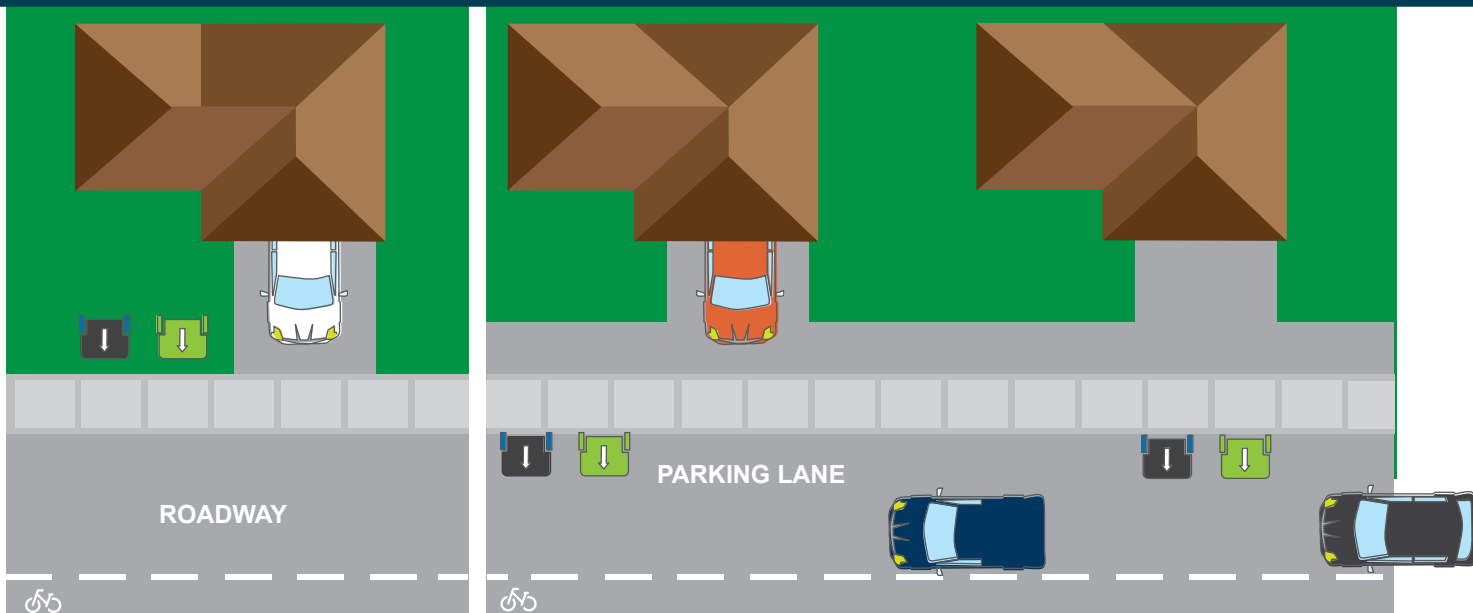
Set carts out for collection by 7:30 AM on your collection day. Do not place carts out the night before collection.

Street Collection **with no marked bike lanes**



- Place carts on the street with wheels against the curb.
- For steep-sloped driveways, set carts out on the street against the curb.
- If obstructed by parked cars, carts can be placed on the driveway within 3.5 metres (12 ft) of the street.

Street Collection **with no marked bike lanes**

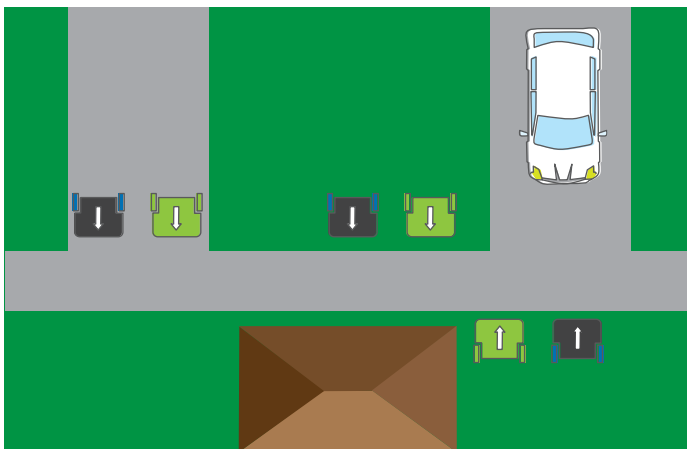


- In areas with no parking lane, carts should be placed behind the sidewalk.
- In areas with a parking lane, carts should be placed in the parking lane for collection
- If obstructed by parked cars, carts can be placed on the driveway within 3.5 metres (12 ft)
- Place carts on the property receiving collection in a less sloped area away from obstacles like park cars and fences



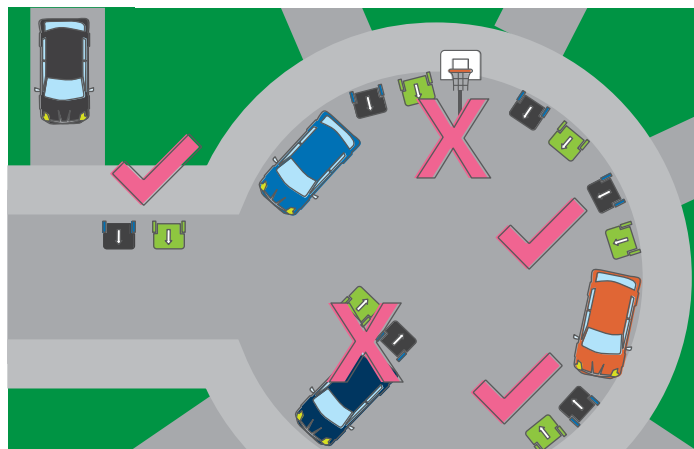
If you are unsure of where to place your cart for collection, please
email col@emterra.ca or call 604.635.0999.

Laneway Collection



- If the laneway is narrow and space is limited, place your cart as close to the lane as possible to ensure the truck's arm reaches the cart.

Cul-de-Sac Collection



- Park vehicles inside the garage or in the driveway to allow more room for the collection truck.
- Keep the streets free of obstacles like basketball hoops and hockey nets or at least 1-metre away from where the carts are placed.

Snow Collection

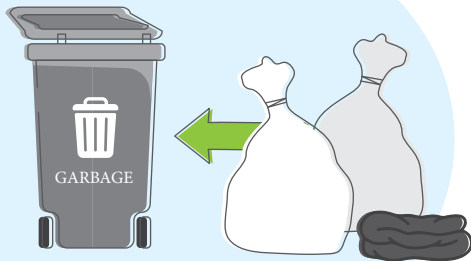


- When shoveling, clear a flat area next to the end of your driveway for carts.
- Alternatively, place carts on a cleared driveway within 3.5metres (12 ft) of the roadway.
- Do not place carts behind or on snowbanks.
- Collection may be cancelled due to inclement weather or poor road conditions.



If you are unsure of where to place your cart for collection, please **email col@emterra.ca or call 604.635.0999.**

Cart Tips



Garbage Cart:

- ✔ Items can be placed bagged or loose in the cart.
- ✔ Please bag any personal hygiene waste.
- ✔ Ensure lids are fully closed.



Organics Cart:

- ✔ Please put out your materials every week even if it's a small amount.
- ✔ Put both food and yard waste in the organics cart.
- ✔ If you choose to line your organics cart, use paper such as a yard waste bag, newspaper, or soiled pizza box. (Compostable and biodegradable plastics are not accepted).
- ✔ Make food waste less wet by straining out liquids from soups or sauces before placing them in the cart.
- ✔ Wrap wet food waste in paper to stop it from sticking to the cart.
- ✔ Pre-freeze food waste before placing it in the cart to reduce odor.
- ✔ Keep the lid closed to avoid wildlife interactions.
- ✔ During warm weather, consider storing in a garage, shed or shady area to help reduce odour.

Resident's Responsibility

- ✔ Properly place carts for collection.
- ✔ Keep carts clean and secure.
- ✔ Write your address on carts in white square.
- ✔ Carts stay with the property even if you move.
- ✔ Use Langley City issued carts for curbside collection.



Never forget a collection day. Get reminders by email, text, or call at LangleyCity.ca/Waste



Langley City



For more information, visit [LangleyCity.ca/Carts](https://www.langleycity.ca/Carts)



Langley City

THE PLACE TO BE