

**SUBDIVISION PLAN OF LOT 25, PLAN 24420 AND LOT 90, PLAN 45080;
BOTH OF SECTION 35 TOWNSHIP 7 NEW WESTMINSTER DISTRICT**

PLAN EPP

City of Langley B.C.G.S. 92G.017



SCALE - 1 : 500

All distances are in metres

The intended plot size of this plan is 560mm in width by 432mm in height (C Size) when plotted at a scale of 1:500

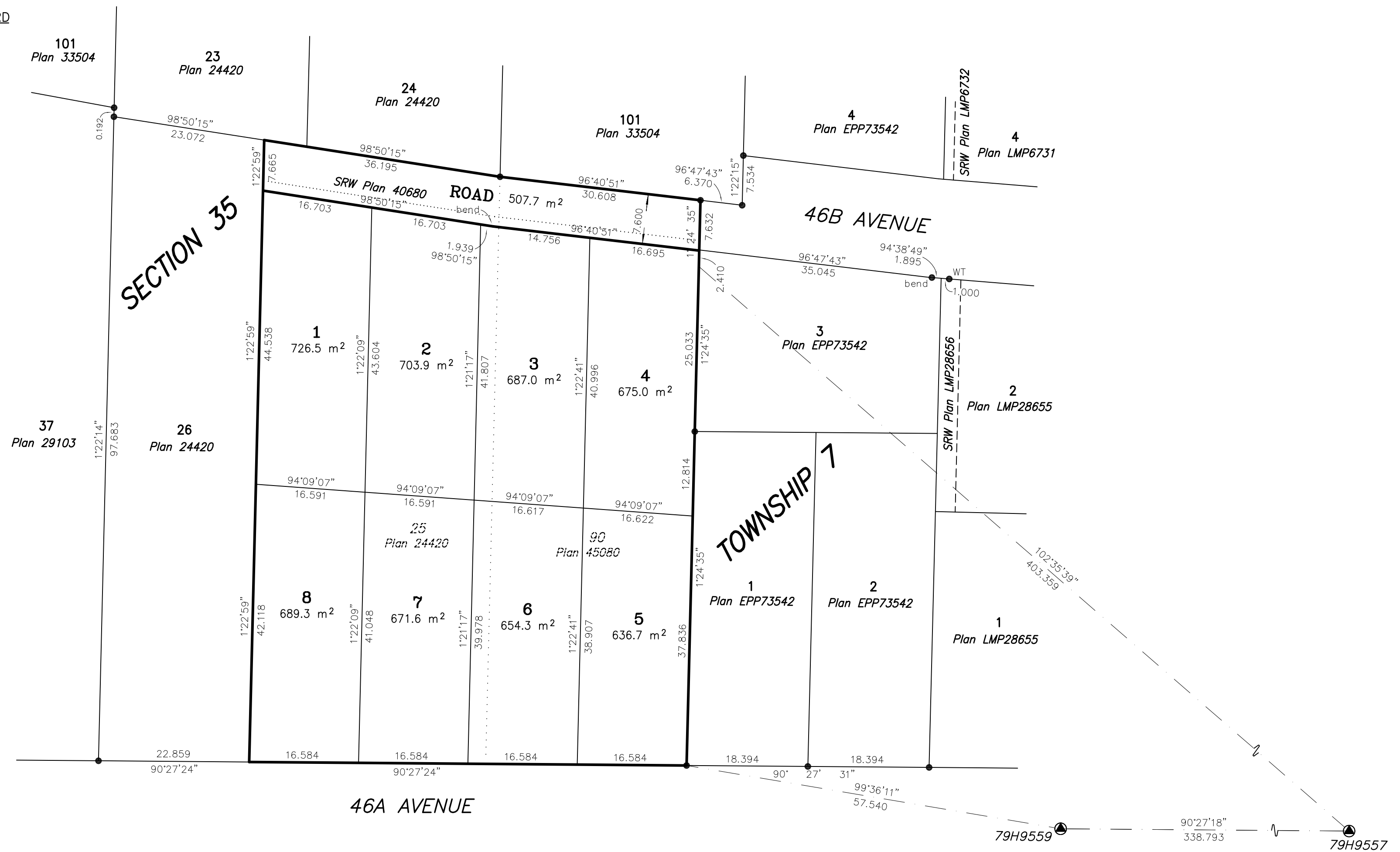
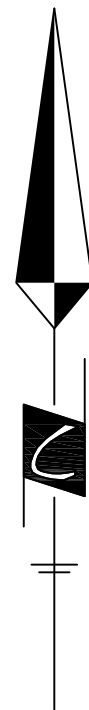
PRELIMINARY 03 NOVEMBER, 2022

Integrated Survey Area No. 45
City of Langley, NAD83 (CSRS) 4.0.0.BC.1.GVRD

Grid Bearings are derived from observations between Control Monuments 79H9559 and 79H9557.

The UTM co-ordinates and horizontal positional accuracy achieved have been derived from the Mascot published coordinates for geodetic control monuments 79H9559 and 79H9557.

This plan shows horizontal ground-level distances except where otherwise noted. To compute grid distances, multiply ground-level distances by the average combined factor of 0.9996043 which has been derived from geodetic control monument 79H9559.



Legend:

- Denotes control monument found
- Denotes standard iron post found
- Denotes standard iron post set
- WT Denotes witness

Note: This plan shows one or more witness posts which are not set on the true corner(s). Witness posts are set along the production of a boundary unless otherwise noted. Some symbols and lines have been exaggerated for clarity.

UTM Coordinates NAD83(CSRS) 4.0.0.BC.1.GVRD Zone 10 North (Central Meridian 123°W)				
	Northing	Easting	Point Combined Scale Factor	Estimated Horizontal Positional Accuracy
79H9559	5,437,134.947	525,330.478	0.9996043	0.02
79H9557	5,437,132.258	525,669.127	0.9996046	0.02

Cameron Land Surveying Ltd.
B.C. Land Surveyors
Unit 234 - 18525-53rd Avenue
Surrey, B.C. V3S 7A4
Phone: 604-597-3777
File: 5968-SUB2

This plan lies within the jurisdiction of the Approving Officer for the City of Langley.

The field survey represented by this plan was completed on the _____ day of _____, 2022.
Sean Costello, BCLS 900

This plan lies within the Metro Vancouver Regional District