

## LANDSCAPE NOTES

- All work shall meet or exceed the requirements as outlined in the Current Edition of the Canadian Landscape Standard.
- All trees to be staked in accordance with Canadian Landscape Standards.
- Tree caliper shall be a minimum of 50mm.
- All Street Trees to have 2.4m long sections of 450mm ht. root barriers installed between the tree and the sidewalks.
- High efficiency irrigation system complete with weather station, to be provided for all on-site 'Lawn Areas' and 'Planted Areas' shown on the drawing.
- Irrigated areas to be installed as a design build irrigation system from the stub outs provided.
- The irrigation system designed and installed shall be in accordance with the IABC Standards and Guidelines.

## BIRD & POLLINATOR SUPPORT

Landscape design and plant selection has been thoughtfully considered to support bird and pollinator habitat. Layered Planting with a variety of texture, height and density has been used and species have been selected to provide the nesting and foraging opportunities for birds and pollinators.

Plant species have been selected to provide material and opportunities for nesting, fruit & seeds as food source, and flowers throughout the growing seasons to provide nectar and support pollination and habitat. Native species and plant diversity that avoids large monocultures will further support a wide range of bird and pollinator species in the area.

## PLANT LIST

### TREES

SYMBOLS	NUMBER	BOTANICAL NAME	COMMON NAME	SIZE/PACING
	4	<u>Acer palmatum 'Sangojaku'</u>	Coastal Bark Japanese Maple	3.2m HI, Multi-trunk, 7L
	22	<u>Cornus kousa 'Milky Way'</u>	Milky Way Kousa Dogwood	7cm Cal. B&B
	3	<u>Pinus thunbergii</u>	Japanese Black Pine	1m HI, B&B, Sourced
	6	<u>Populus tremuloides</u>	Quaking Aspen	5 cm Cal.
	10	<u>Prunus x yedoensis 'Akebono'</u>	Akebono Yoshino Cherry	7cm Cal. B&B
	7	Street Tree	Common Name	

### Shrubs

SYMBOLS	NUMBER	BOTANICAL NAME	COMMON NAME	SIZE/PACING
Ah	90	<u>Azalea japonica 'Hiro White'</u>	Hiro White Japanese Azalea	#2 pot / 24" O.C.
Im	138	<u>Buxus microphylla 'Green Beauty'</u>	Litléleaf Boxwood	#2 pot / 24" O.C.
Ck	31	<u>Cornus sericea 'Kelsey'</u>	Kelsey's Dwarf Red-Osier Dogwood	#2 pot / 24" O.C.
H2	19	<u>Hydrangea macrophylla 'Blushing Bride'</u>	Endless Summer® Blushing Bride Hydrangea	#3 Pot / 36" O.C.
Hs1	16	<u>Hydrangea macrophylla 'Endless Summer'</u>	Endless Summer Hydrangea (Blue)	#3 Pot / 36" O.C.
Pa	101	<u>Philadelphus lewisii</u>	Mock Orange	#2 pot / 18" O.C.
So	81	<u>Symphoricarpos albus</u>	Snowberry	#3 pot / 36" O.C.
Ti	422	<u>Taxus x media 'Mill' (Male Plants Only)</u>	Little Tree	#1 or 3/4" DI, 11 to 17"
Vo	156	<u>Vaccinium Ovatum</u>	Thunderbolt Funngem Huckleberry	#2 pot / 30" O.C.

### GROUNDCOVERS, GRASSES, FERNS & VINES

SYMBOLS	NUMBER	BOTANICAL NAME	COMMON NAME	SIZE/PACING
Cc	331	<u>Cornus canadensis</u>	Blackberry	#2 pot / 12" O.C.
Hl	56	<u>Hosta x 'Frances Williams'</u>	Frances Williams Hosta	#1 pot / 18" O.C.
Hp	2	<u>Hydrangea anomala petalolaria</u>	Climbing Hydrangea	#2 Pot
It	55	<u>Lavandula angustifolia 'Hidcot'</u>	Hidcot Lavender	#2 pot / 24" O.C.
Im	355	<u>Lilopsis muscari</u>	Big Blue Lily-Turf	#1 pot / 12" O.C.

\*Note: Native Plants are highlighted with red underline.

## REFERENCE IMAGES

- Muted colour palette with rough textures;
- Material palette consists a mix of stone, wood and clay;
- Gravel and boulders;
- Feature Trees: Cherry, Japanese maple, Pine.
- Low maintenance and drought tolerant plant palette.



Small Pine Tree



Yoshino Cherry



Opaque Fence



Semi-Transparent Fence



Natural Stone Paving Slabs & Gravel Paving Surface



Ground Level Patio Entry

## MATERIAL LEGEND

### HARD LANDSCAPE AREAS

C.P Concrete  
Colour: Natural  
Broom finish with control joints

Hydropressed Concrete  
Paving Slabs

Hydropressed Concrete  
Paving Slabs

Basalt Paving Slabs

Paving Stone Slabs

Drain Rock

Japanese Style White Gravel

Poured in Place Rubber Play Surface  
(Colour and Pattern TBD)

Pea Gravel (Dog Off-Leash Area)

### SOFT LANDSCAPE AREAS

Planted Areas  
(In Raised Planters)

Planting Area  
(On grade)

Sodded Lawn

## FURNISHING LEGEND

Outdoor Conversation Set

Outdoor Dining Table

Bench

Semi-Transparent Fence  
Metal Posts and Composite Wood Infill  
Refer to reference image

Gate & Opaque Fence  
Metal Posts and Composite Wood Infill  
Refer to reference image

Metal Fence & Gate  
@ Dog Off-Leash Area

Frosted Glass Privacy Fence

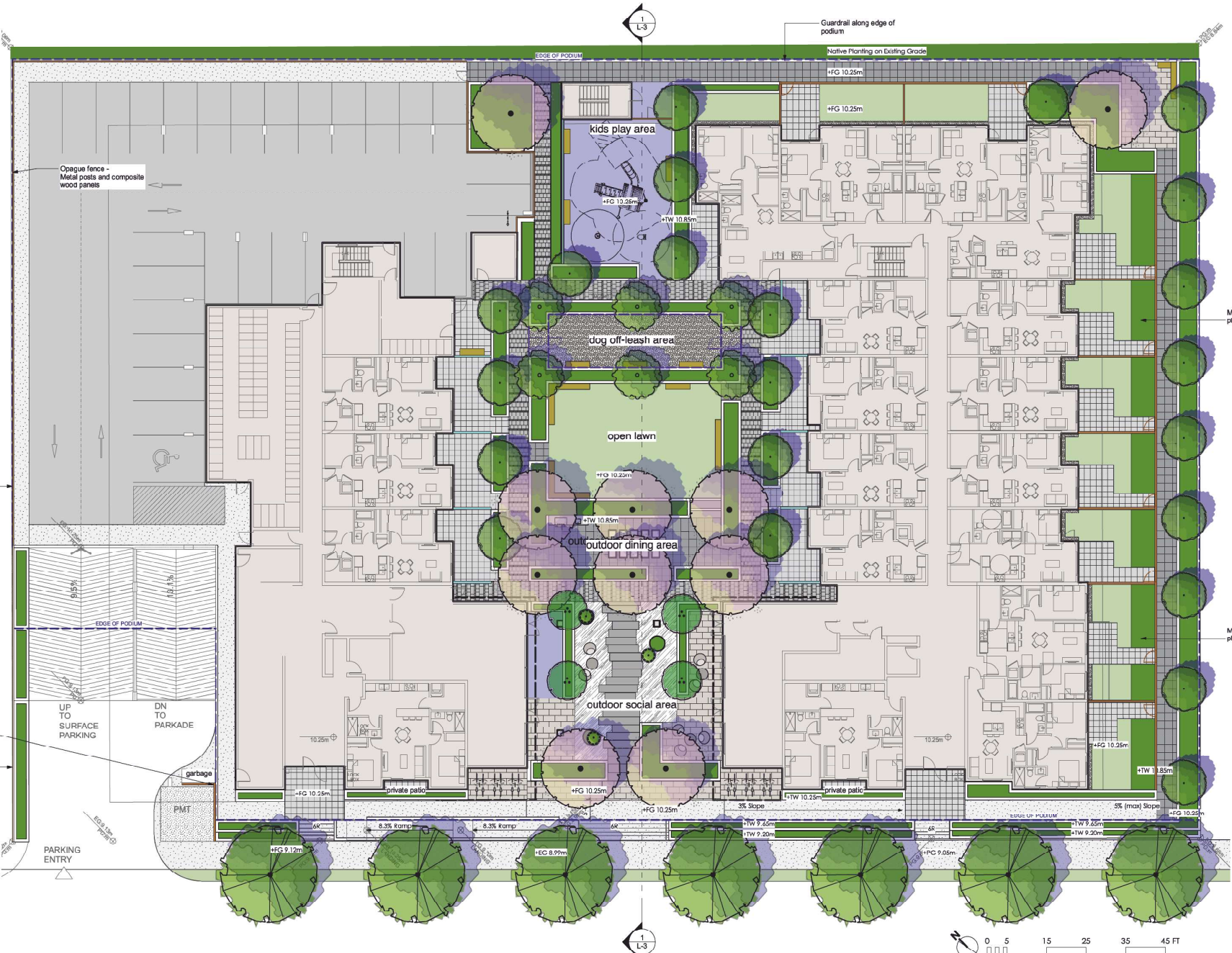
## FURNISHING LEGEND

Play Tower with Slide

Small Springler

Small Play Equipment





Opaque fence - Metal posts and composite wood panels

Opaque Fence

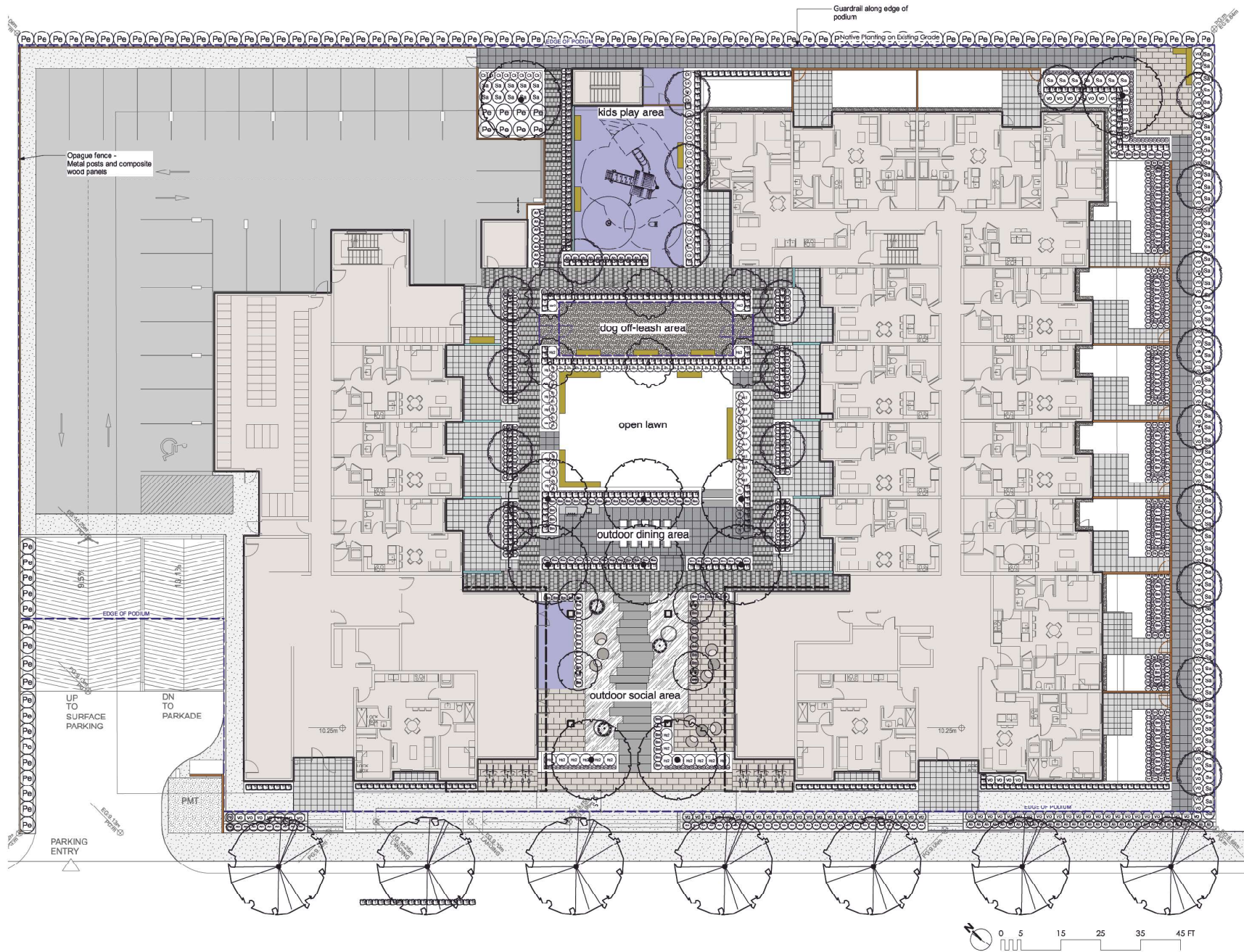
Fence with Vines

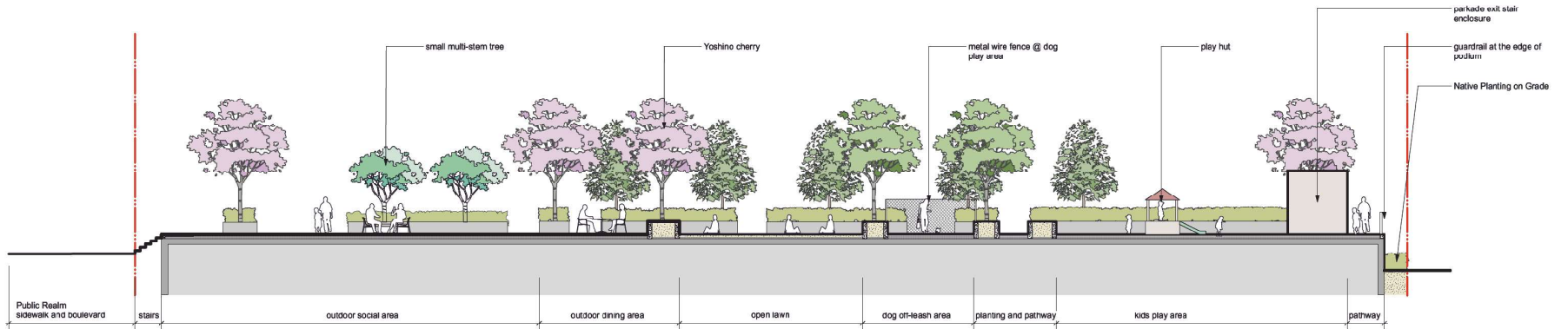
Semi-Transparent Fence & Planting on grade

PARKING ENTRY









1 Section through Amenity Courtyard  
Scale: 1/8" = 1'-0"

