

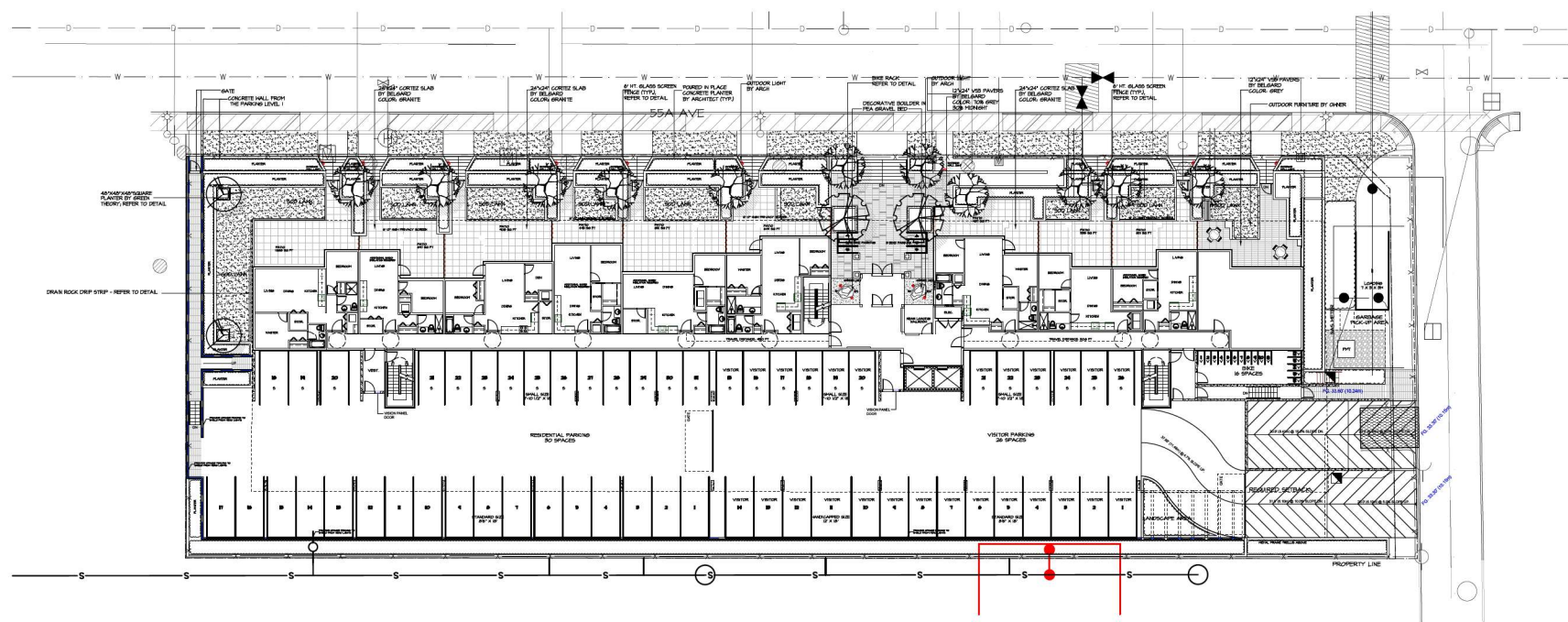
©Copyright reserved. This drawing and design is the property of M2 Landscape Architects and may not be reproduced or used for other projects without their permission.



#220 - 26 Lorne Mews
 New Westminster, British Columbia
 V3M 3L7
 Tel: 604.553.0044
 Fax: 604.553.0045
 Email: office@m2la.com



FENCE LEGEND	
	30" H. FENCE
	36" H. SCREEN



NO.	DATE	REVISION DESCRIPTION	DR.
10	28.AUG.22	REV. PER ACP COMMENTS	GB/LC
11	25.JUL.21	REV. AS PER NEW SITE PLAN	GB
12	25.JUL.20	REV. AS PER CITY COMMENTS	GB
13	25.JUL.20	ISSUE FOR DP	GB
14	22.JAN.20	ISSUE FOR DP	GB
15	20.FEB.21	ISSUE OPEN-SITE PLAN	GB
16	23.JUL.21	ISSUE FOR DP	JC
17	19.MAR.20	REV. AS PER CITY COMMENTS	DY
18	19.FEB.20	REV. AS PER NEW SITE PLAN	DY
19	10.FEB.20	REV. AS PER ANEA COMMENTS	JP
20	10.FEB.20	REVISION AS PER NEW SITE PLAN	JP
21	18.MAY.21	ISSUED FOR DP	DY
22	18.MAY.21	PRELIMINARY DESIGN	DY



PROJECT:
MULTI-RESIDENTIAL DEVELOPMENT
 19920 & 19970 55A Avenue
 Langley, BC

DRAWING TITLE:
GROUND FLOOR LAYOUT PLAN

DATE: 18.NOV.21	DRAWING NUMBER:
SCALE: 1/8"=1'-0"	L1
DRAWN: DY	
DESIGN: DY	
CHK'D: MTLM	

PLANT SCHEDULE

KEY	QTY	BOTANICAL NAME	COMMON NAME	PLANTED SIZE / REMARKS
TREE	2	ACER GRISEUM	PAPERBARK MAPLE	60" CAL, B4B
TREE	11	CORNUS FLORIDA	FLOWERING DOGWOOD	50" CAL, B4B
TREE	2	FRAXUS SERRULATA 'ANANASANA'	ANANASANA CHERRY	50" CAL, B4B
SHRUB	215	BUXUS SEP-PRUVENS AUREO-VAREGATA	VAREGATED ENGLISH BOXWOOD	12" POT
SHRUB	41	LONGICHA FUSCATA	SHRUB HONEYSUCKLE	12" POT
SHRUB	40	LONGICHA NITIDA SILVER BEAUTY	SILVER BEAUTY HONEYSUCKLE	12" POT, 30CM
SHRUB	301	TAKS X MEDIA 'HICKSI'	HICKS YEW	18" POT, 30CM
GRASS	143	ELYMUS HAEUILLANGIS BLUE TANGO	BLUE TANGO HEAT GRASS	11" POT
GRASS	14	MAKINOESOLA MAGRA 'ALL GOLD'	JAPANESE FOREST GRASS	11" POT
GRASS	6	OPILOPOSON PLANISCAEPS 'NIGRESCENS'	HONDO GRASS	11" POT
GRASS	50	PENNISETUM ALOPECUROIDES 'HAELIN'	DWARF FOUNTAIN GRASS	12" POT
PERENNIAL	14	GERANIUM PATRICIA GRABEBILLS	GRABEBILL GERANIUM	11" POT
PERENNIAL	28	HECUBA CARNIVAL WATERMELON	CORAL BELLS	11" POT
PERENNIAL	25	LAVENDULA ANGSTIFOLIA	ENGLISH LAVENDER	11" POT
PERENNIAL	53	HEPETA X VERANCA 'DROPHORE'	CATPANT	11" POT
PERENNIAL	151	ROSEOGIA FLOIDA VAR. BELLIVANTII 'SOLDILOGOS'	ROSEOGIA	11" POT

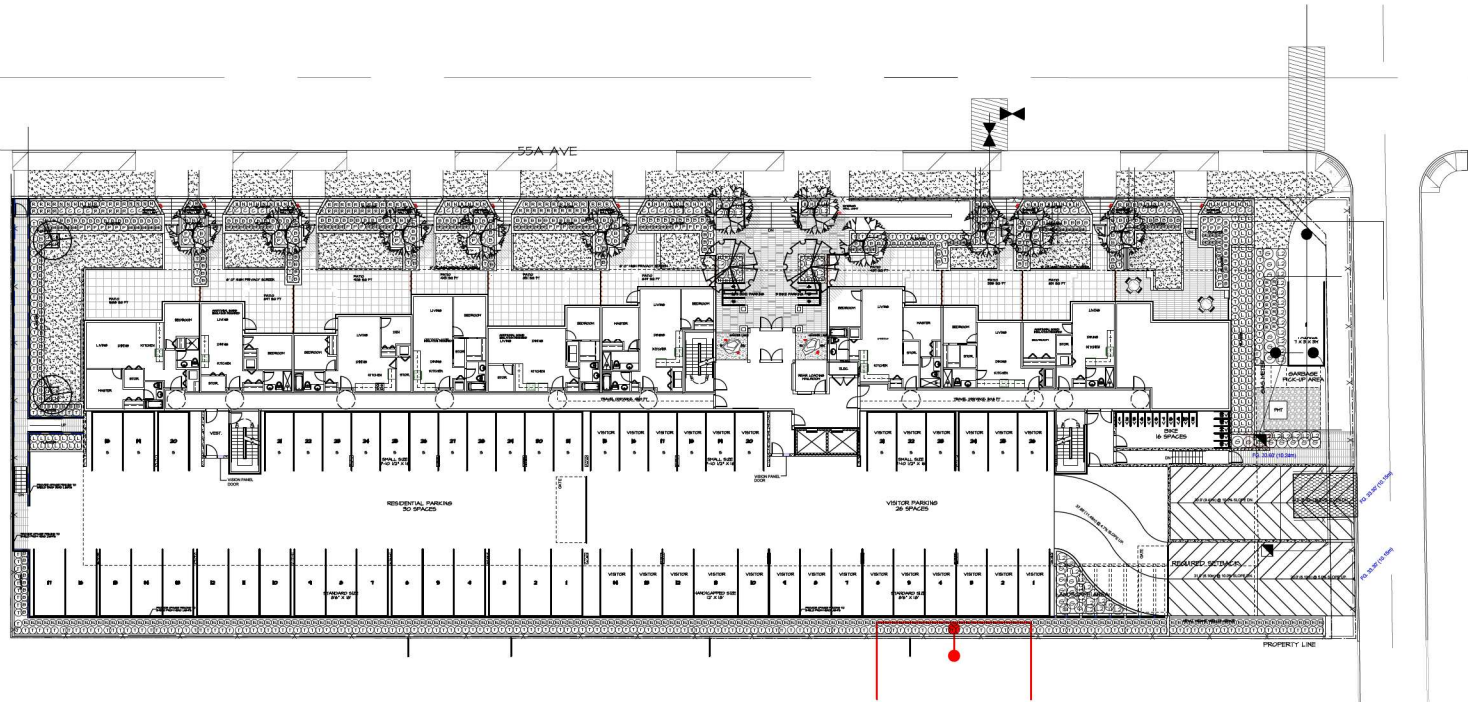
NOTES: * PLANT SIZES IN THIS LIST ARE SPECIFIED ACCORDING TO THE BC LANDSCAPE STANDARD LATEST EDITION. CONTAINER SIZES SPECIFIED AS PER CANITA STANDARDS. BOTH PLANT SIZE AND CONTAINER SIZE ARE THE MINIMUM ACCEPTABLE SIZES. * REFER TO SPECIFICATIONS FOR DEFINED CONTAINER MEASUREMENTS AND OTHER PLANT MATERIAL REQUIREMENTS. * SEARCH AND REVISE MAKE PLANT MATERIAL AVAILABLE FOR OPTIONAL REVIEW BY LANDSCAPE ARCHITECT AT SOURCE OF SUPPLY. AREA OF SEARCH TO INCLUDE LOWER MAINLAND AND FRASER VALLEY. * SUBSTITUTIONS OBTAIN WRITTEN APPROVAL FROM THE LANDSCAPE ARCHITECT PRIOR TO MAKING ANY SUBSTITUTIONS. TO THE SPECIFIED MATERIAL. UNAPPROVED SUBSTITUTIONS WILL BE REJECTED. ALLOW A MINIMUM OF FIVE DAYS PRIOR TO DELIVERY FOR REQUEST TO SUBSTITUTE. SUBSTITUTIONS ARE SUBJECT TO BC LANDSCAPE STANDARD - DEFINITION OF CONDITIONS OF AVAILABILITY.

ALL PLANT MATERIAL MUST BE PROVIDED FROM CERTIFIED DISEASE FREE NURSERY. PROVIDE CERTIFICATION UPON REQUEST.

©Copyright reserved. This drawing and design is the property of M2 Landscape Architects and may not be reproduced or used for other projects without their permission.



#220 - 26 Lorne Mews
 New Westminster, British Columbia
 V3M 3L7
 Tel: 604.553.0044
 Fax: 604.553.0045
 Email: office@m2la.com



NO.	DATE	REVISION DESCRIPTION	DR.
13	28.AUG.25	REV. PER ACP COMMENTS	GEV/LC
12	25.JUL.25	REV. AS PER NEW SITE PLAN	GEV
11	25.JUL.25	REV. AS PER CITY COMMENTS	GEV
10	22.JUL.25	ISSUE FOR DP	GEV
9	22.JUL.25	ISSUE FOR DP	GEV
8	20.JUL.25	ISSUE OFF-SITE PLAN	GEV
7	21.JUL.25	ISSUE FOR DP	GEV
6	19.MAR.25	REV. AS PER CITY COMMENTS	DY
5	19.FEB.25	REV. AS PER NEW SITE PLAN	DY
4	05.FEB.25	REV. AS PER ACP COMMENTS	JD
3	03.FEB.25	REVISION AS PER NEW SITE PLAN	JD
2	28.NOV.24	ISSUED FOR DP	DY
1	28.NOV.24	PRELIMINARY DESIGN	DY

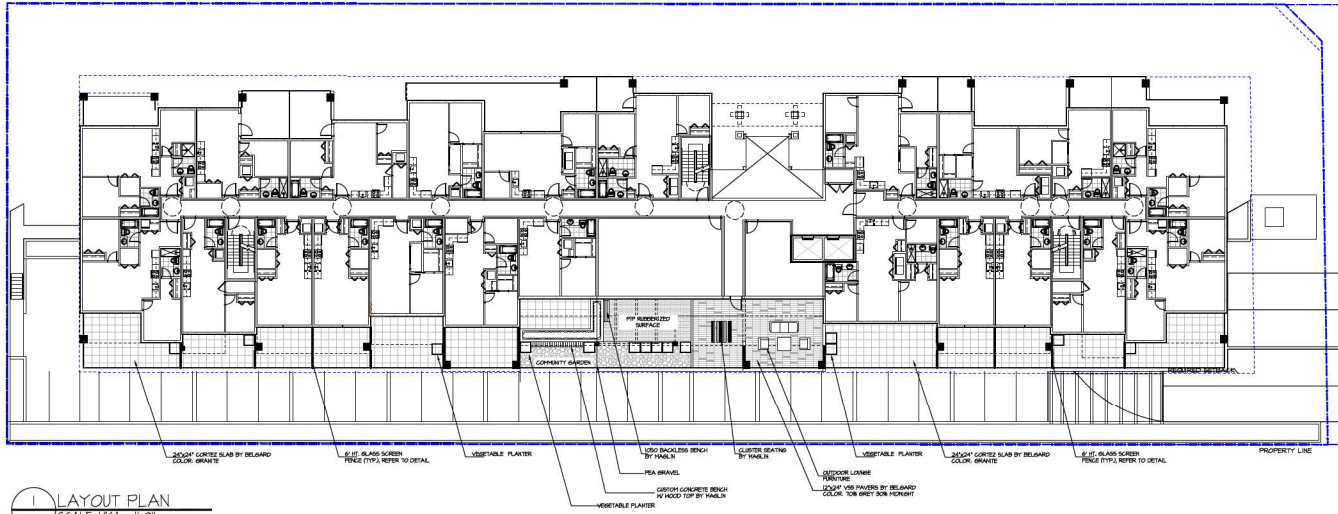


PROJECT:
MULTI-RESIDENTIAL DEVELOPMENT
 19920 & 19970 55A Avenue
 Langley, BC

DRAWING TITLE:
GROUND FLOOR PLANTING PLAN

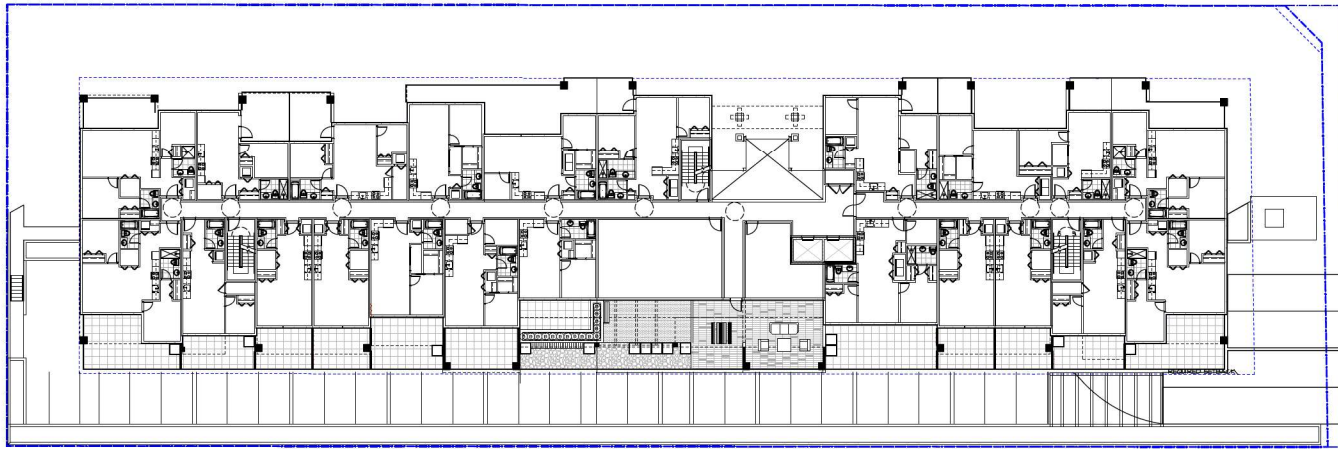
DATE: 18.NOV.24	DRAWING NUMBER:
SCALE: 1/8"=1'-0"	L2
DRAWN: DY	OF 7
DESIGN: DY	
CHK'D: MTLM	

55A AVE



1 LAYOUT PLAN
SCALE: 1/16" = 1'-0"

55A AVE



2 PLANTING PLAN
SCALE: 1/16" = 1'-0"

PLANT SCHEDULE				M2 JOB NUMBER: 18-064
KEY QTY	BOTANICAL NAME	COMMON NAME	PLANTED SIZE	REMARKS
SPECIES				
B	BURAS SEMPERVIRENS AUREO-VAREGATA	VAREGATED ENGLISH BROOMWOOD	12 POT	

NOTES: * PLANT SIZES IN THIS LIST ARE SPECIFIED ACCORDING TO THE BC LANDSCAPE STANDARD, LATEST EDITION. CONTAINER SIZES SPECIFIED AS PER DATA STANDARDS. BOTH PLANT SIZE AND CONTAINER SIZE ARE THE MINIMUM ACCEPTABLE SIZES. * REFER TO SPECIFICATIONS FOR DEFINED CONTAINER MEASUREMENTS AND OTHER PLANT MATERIAL REQUIREMENTS. * SEARCH AND REVEAL HAVE PLANT MATERIAL AVAILABLE FOR OPTIONAL REVIEW BY LANDSCAPE ARCHITECT AT SOURCE OF SUPPLY. AREA OF SEARCH TO INCLUDE LOWER MAINLAND AND FRASER VALLEY. * SUBSTITUTIONS OBTAIN WRITTEN APPROVAL FROM THE LANDSCAPE ARCHITECT PRIOR TO MAKING ANY SUBSTITUTIONS TO THE SPECIFIED MATERIAL. UNAPPROVED SUBSTITUTIONS WILL BE SELECTED. ALLOW A MINIMUM OF FIVE DAYS PRIOR TO DELIVERY FOR REQUEST TO SUBSTITUTE. SUBSTITUTIONS ARE SUBJECT TO BC LANDSCAPE STANDARD - DEFINITION OF CONDITIONS OF AVAILABILITY.

ALL PLANT MATERIAL MUST BE PROVIDED FROM CERTIFIED DISEASE FREE NURSERY. PROVIDE CERTIFICATION UPON REQUEST.

Copyright reserved. This drawing and design is the property of M2 Landscape Architects and may not be reproduced or used for other projects without their permission.



#220 - 26 Lorne Mews
New Westminster, British Columbia
V3M 3L7
Tel: 604.553.0044
Fax: 604.553.0045
Email: office@m2la.com



NO.	DATE	REVISION DESCRIPTION	DR.
1	18/01/18	PRELIMINARY DESIGN	DY
2	18/01/18	ISSUED FOR DP	DY
3	18/02/18	REVISION AS PER NEW SITE PLAN	JP
4	18/02/18	REVISION AS PER ANEAL COMMENTS	JP
5	18/02/18	REVISION AS PER NEW SITE PLAN	DY
6	18/04/18	REVISION PER CITY COMMENTS	DY
7	21/01/17	ISSUE FOR DP	JC
8	22/01/17	ISSUE FOR DP	GB
9	22/01/17	ISSUE FOR DP	GB
10	22/01/17	ISSUE FOR DP	GB
11	22/01/17	ISSUE FOR DP	GB
12	25/01/17	REVISION AS PER NEW SITE PLAN	GB
13	28/01/17	REV. PER ACP COMMENTS	GB/JC



PROJECT:
MULTI-RESIDENTIAL DEVELOPMENT
19920 & 19970 55A Avenue
Langley, BC

DRAWING TITLE:
SECOND FLOOR LAYOUT PLAN

DATE: 18/NOV/17	DRAWING NUMBER:
SCALE: 1/16" = 1'-0"	L3
DRAWN: DY	
DESIGN: DY	
CHK'D: MTLM	OF 7

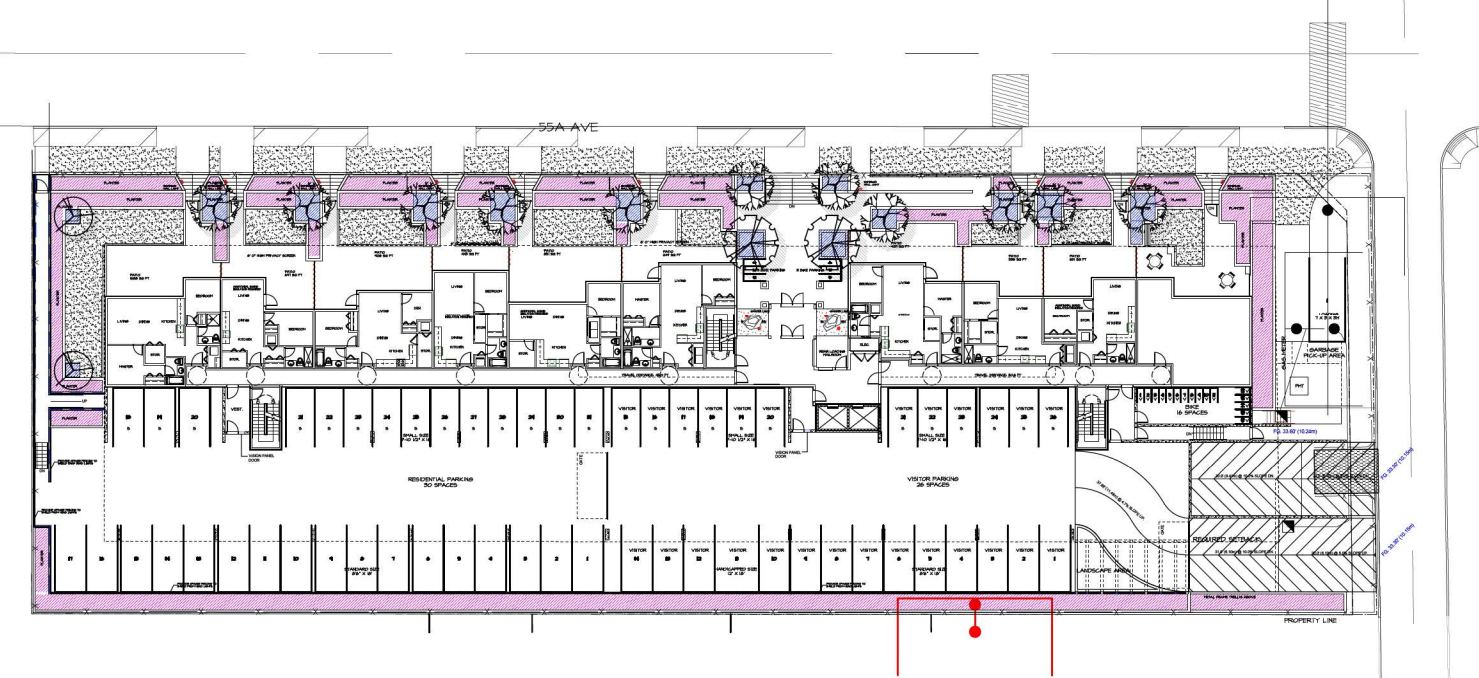
©Copyright reserved. This drawing and design is the property of M2 Landscape Architects and may not be reproduced or used for other projects without their permission.



#220 - 26 Lorne Mews
 New Westminster, British Columbia
 V3M 3L7
 Tel: 604.553.0044
 Fax: 604.553.0045
 Email: office@m2la.com



SOIL DEPTH LEGEND	
	SOIL DEPTH MORE THAN 3'
	SOIL DEPTH MORE THAN 2'



NO.	DATE	REVISION DESCRIPTION	DR.
13	28.AUG.25	REV. PER ACP COMMENTS	GB/LC
12	25.JUL.25	REV. AS PER NEW SITE PLAN	GB
11	22.JUL.25	REV. AS PER CITY COMMENTS	GB
10	22.JUL.25	ISSUE FOR DP	GB
9	22.JUL.25	ISSUE FOR DP	GB
8	22.JUL.25	ISSUE FOR DP	GB
7	22.JUL.25	ISSUE FOR DP	GB
6	19.AUG.24	REV. AS PER CITY COMMENTS	DY
5	19.AUG.24	REV. AS PER NEW SITE PLAN	DY
4	19.AUG.24	REV. AS PER ACP COMMENTS	JD
3	19.AUG.24	REVISION AS PER NEW SITE PLAN	JD
2	18.NOV.24	ISSUED FOR DP	DY
1	18.NOV.24	PRELIMINARY DESIGN	DY



PROJECT:
MULTI-RESIDENTIAL DEVELOPMENT
 19920 & 19970 55A Avenue
 Langley, BC

DRAWING TITLE:
SOIL DEPTHS PLAN

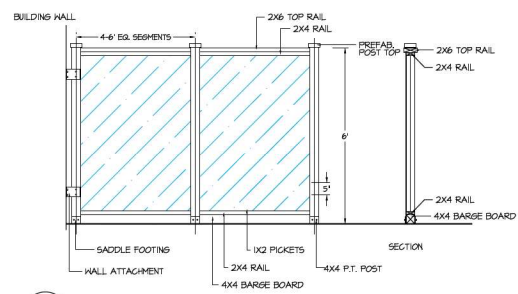
DATE: 18.NOV.24	DRAWING NUMBER:
SCALE: 1/8"=1'-0"	L4
DRAWN: DY	
DESIGN: DY	
CHK'D: MTLM	

M2LA PROJECT NUMBER: **JOB NO. 18-064**

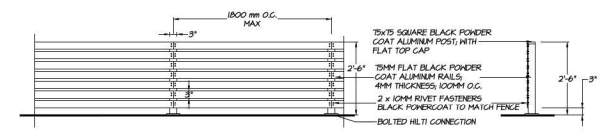


#220 - 26 Lorne Mews
New Westminster, British Columbia
V3M 3L7
Tel: 604.553.0044
Fax: 604.553.0045
Email: office@m2la.com

- NOTES:
1. ALUMINUM AND FROSTED GLASS
2. STAIN TO MATCH ARCH. THO COATS PREMIUM HEATHER PROOFING STAIN
3. ALL FASTENERS HOT-DIPPED GALVANIZED
4. MULTI MOUNT FENCE TO CONCRETE WALL (SIDE MOUNT OR TOP MOUNT)

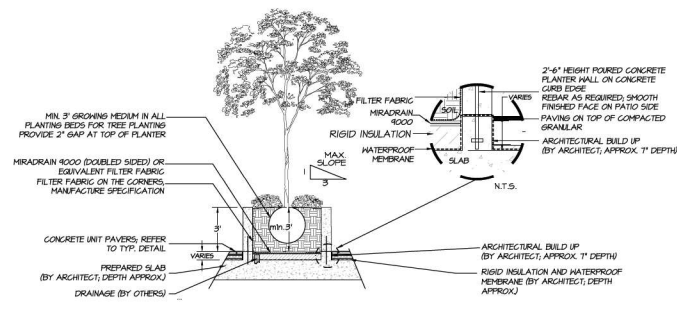


1 6' HT. FROSTED GLASS SCREEN
SCALE: 1/2" = 1'-0"

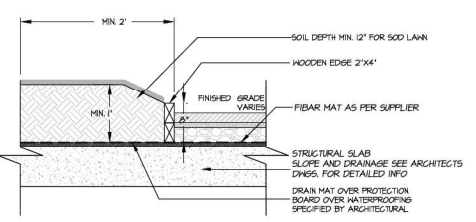


- NOTES:
1. ALL FASTENERS TO MATCH BLACK POWDER COAT COLOUR TO FENCE
2. INSTALL AS PER MANUFACTURERS SPECIFICATIONS

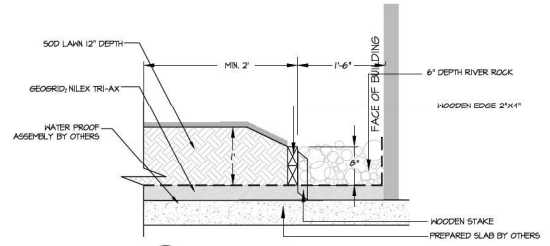
2 5' HT. ALUMINUM FENCE
SCALE: 1/2" = 1'-0"



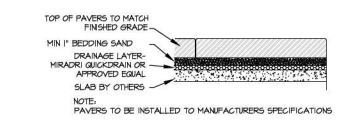
3 PLANTER ON SLAB
SCALE: 1/4" = 1'-0"



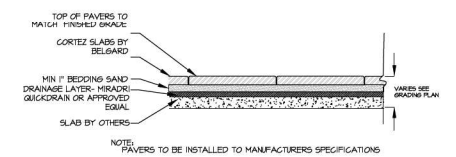
4 SOD LAWN ON SLAB
SCALE: 1" = 1'-0"



5 DRIP STRIP AND SOD LAWN
SCALE: 1" = 1'-0"



6 PAVERS ON SLAB
SCALE: 1" = 1'-0"



7 CORTEZ SLAB
SCALE: 1" = 1'-0"



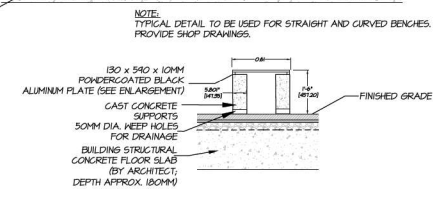
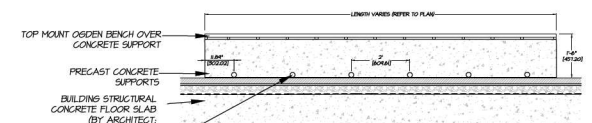
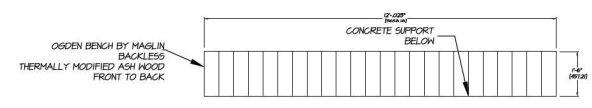
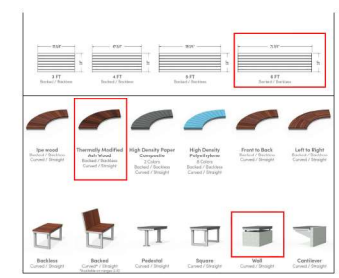
CORTEZ SLAB- GRANITE



V55 PAVERS- GREY



V55 PAVERS- MIDNIGHT



8 OSDEN BENCH W/ WOOD TOP BY MAGLIN
SCALE: 1/2" = 1'-0"

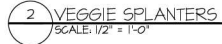
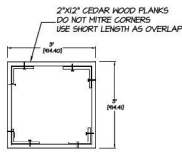
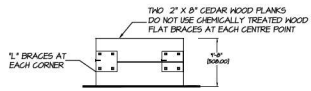
NO.	DATE	REVISION DESCRIPTION	DR.
10	28.AUG.25	REV. PER ACP COMMENTS	GB/LC
11	25.JUL.20	REV. AS PER NEW SITE PLAN	GB
12	25.JUL.20	REV. AS PER CITY COMMENTS	GB
13	25.JUL.20	ISSUE FOR DP	GB
14	22.AUG.19	ISSUE FOR DP	GB
15	25.OCT.21	ISSUE FOR DP	GB
16	25.OCT.21	ISSUE FOR DP	GB
17	25.JUL.21	ISSUE FOR DP	GB
18	25.OCT.21	ISSUE FOR DP	GB
19	25.OCT.21	ISSUE FOR DP	GB
20	25.OCT.21	ISSUE FOR DP	GB
21	25.OCT.21	ISSUE FOR DP	GB
22	25.OCT.21	ISSUE FOR DP	GB
23	25.OCT.21	ISSUE FOR DP	GB
24	25.OCT.21	ISSUE FOR DP	GB
25	25.OCT.21	ISSUE FOR DP	GB
26	25.OCT.21	ISSUE FOR DP	GB
27	25.OCT.21	ISSUE FOR DP	GB
28	25.OCT.21	ISSUE FOR DP	GB
29	25.OCT.21	ISSUE FOR DP	GB
30	25.OCT.21	ISSUE FOR DP	GB
31	25.OCT.21	ISSUE FOR DP	GB
32	25.OCT.21	ISSUE FOR DP	GB
33	25.OCT.21	ISSUE FOR DP	GB
34	25.OCT.21	ISSUE FOR DP	GB
35	25.OCT.21	ISSUE FOR DP	GB
36	25.OCT.21	ISSUE FOR DP	GB
37	25.OCT.21	ISSUE FOR DP	GB
38	25.OCT.21	ISSUE FOR DP	GB
39	25.OCT.21	ISSUE FOR DP	GB
40	25.OCT.21	ISSUE FOR DP	GB
41	25.OCT.21	ISSUE FOR DP	GB
42	25.OCT.21	ISSUE FOR DP	GB
43	25.OCT.21	ISSUE FOR DP	GB
44	25.OCT.21	ISSUE FOR DP	GB
45	25.OCT.21	ISSUE FOR DP	GB
46	25.OCT.21	ISSUE FOR DP	GB
47	25.OCT.21	ISSUE FOR DP	GB
48	25.OCT.21	ISSUE FOR DP	GB
49	25.OCT.21	ISSUE FOR DP	GB
50	25.OCT.21	ISSUE FOR DP	GB
51	25.OCT.21	ISSUE FOR DP	GB
52	25.OCT.21	ISSUE FOR DP	GB
53	25.OCT.21	ISSUE FOR DP	GB
54	25.OCT.21	ISSUE FOR DP	GB
55	25.OCT.21	ISSUE FOR DP	GB
56	25.OCT.21	ISSUE FOR DP	GB
57	25.OCT.21	ISSUE FOR DP	GB
58	25.OCT.21	ISSUE FOR DP	GB
59	25.OCT.21	ISSUE FOR DP	GB
60	25.OCT.21	ISSUE FOR DP	GB
61	25.OCT.21	ISSUE FOR DP	GB
62	25.OCT.21	ISSUE FOR DP	GB
63	25.OCT.21	ISSUE FOR DP	GB
64	25.OCT.21	ISSUE FOR DP	GB
65	25.OCT.21	ISSUE FOR DP	GB
66	25.OCT.21	ISSUE FOR DP	GB
67	25.OCT.21	ISSUE FOR DP	GB
68	25.OCT.21	ISSUE FOR DP	GB
69	25.OCT.21	ISSUE FOR DP	GB
70	25.OCT.21	ISSUE FOR DP	GB
71	25.OCT.21	ISSUE FOR DP	GB
72	25.OCT.21	ISSUE FOR DP	GB
73	25.OCT.21	ISSUE FOR DP	GB
74	25.OCT.21	ISSUE FOR DP	GB
75	25.OCT.21	ISSUE FOR DP	GB
76	25.OCT.21	ISSUE FOR DP	GB
77	25.OCT.21	ISSUE FOR DP	GB
78	25.OCT.21	ISSUE FOR DP	GB
79	25.OCT.21	ISSUE FOR DP	GB
80	25.OCT.21	ISSUE FOR DP	GB
81	25.OCT.21	ISSUE FOR DP	GB
82	25.OCT.21	ISSUE FOR DP	GB
83	25.OCT.21	ISSUE FOR DP	GB
84	25.OCT.21	ISSUE FOR DP	GB
85	25.OCT.21	ISSUE FOR DP	GB
86	25.OCT.21	ISSUE FOR DP	GB
87	25.OCT.21	ISSUE FOR DP	GB
88	25.OCT.21	ISSUE FOR DP	GB
89	25.OCT.21	ISSUE FOR DP	GB
90	25.OCT.21	ISSUE FOR DP	GB
91	25.OCT.21	ISSUE FOR DP	GB
92	25.OCT.21	ISSUE FOR DP	GB
93	25.OCT.21	ISSUE FOR DP	GB
94	25.OCT.21	ISSUE FOR DP	GB
95	25.OCT.21	ISSUE FOR DP	GB
96	25.OCT.21	ISSUE FOR DP	GB
97	25.OCT.21	ISSUE FOR DP	GB
98	25.OCT.21	ISSUE FOR DP	GB
99	25.OCT.21	ISSUE FOR DP	GB
100	25.OCT.21	ISSUE FOR DP	GB



PROJECT:
MULTI-RESIDENTIAL DEVELOPMENT
19920 & 19970 55A Avenue
Langley, BC

DRAWING TITLE:
LANDSCAPE DETAILS 1

DATE: 18.NOV.21	DRAWING NUMBER:
SCALE: AS SHOWN	
DRAWN: DY	L5
DESIGN: DY	
CHK'D: MTLM	
M2LA PROJECT NUMBER: 18-064-172P	JOB NO. 18-064



MTB-0210-00024
Legacy #M1PT7210-S-RB

200 SERIES



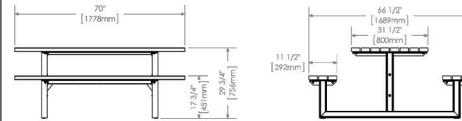
MATERIALS: Table frame is made from 3"x 2-3/8" structural I-Beam with mitered corners. Horizontal support beams are used for superior stability and structural integrity. Surface material is plastic - Brown color.

FINISH: All steel components are protected with E-Coat rust proofing. The Maglin Powdercoat System provides a durable finish on all metal surfaces.

INSTALLATION: The table is delivered pre-assembled. Holes (0.5") are provided for securing to base.

TO SPECIFY: Select MBE-0210-00024
Choose:
- Powdercoat Color

HEIGHT: 29.75" (75.6cm) LENGTH: 70" (177.8cm) WIDTH: 66.5" (168.9cm) WEIGHT: 385.39lbs (174.8kg)



MAGLIN®
Site Furniture

1 800 716 5508
4 971 280 8888
www.maglin.com
sales@maglin.com

All drawings, specifications, design and details on this page remain the property of Maglin Site Furniture Inc. and may not be used without Maglin's authorization. Details and specifications may vary due to continuing improvements of our products.



©Copyright reserved. This drawing and design is the property of M2 Landscape Architects and may not be reproduced or used for other projects without their permission.



#220 - 26 Lorne Mews
New Westminster, British Columbia
V3M 3L7
Tel: 604.553.0044
Fax: 604.553.0045
Email: office@m2la.com

NO.	DATE	REVISION DESCRIPTION	DR.
1	18NOV17	PRELIMINARY DESIGN	DY
2	18NOV17	ISSUES FOR DP	DY
3	18DEC17	REVISION AS PER NEW SITE PLAN	JP
4	18DEC17	REVISION AS PER ANEAL COMMENTS	JP
5	18DEC17	REVISION AS PER NEW SITE PLAN	DY
6	18MAR18	REVISION AS PER CITY COMMENTS	DY
7	21JUL17	ISSUE FOR DP	JP
8	21DEC17	ISSUE OFF-SITE PLAN	JP
9	22JAN18	ISSUE FOR DP	JP
10	22JAN18	ISSUE FOR DP	JP
11	22JAN18	REVISION AS PER CITY COMMENTS	JP
12	22JAN18	REVISION AS PER NEW SITE PLAN	JP
13	28AUG18	REV. PER ACP COMMENTS	GB/LC



PROJECT:
MULTI-RESIDENTIAL DEVELOPMENT
19920 & 19970 55A Avenue
Langley, BC

DRAWING TITLE:
LANDSCAPE DETAILS 2

DATE: 18NOV17	DRAWING NUMBER:
SCALE: AS SHOWN	L6
DRAWN: DY	
DESIGN: DY	
CHECK: MTLM	

M2LA PROJECT NUMBER: **JOB NO. 18-064**

18 064-17.rvt

PART ONE GENERAL REQUIREMENTS

1.0 REFERENCED DOCUMENTS
1.1 **CODES AND STANDARDS**
1.2 **GENERAL CONTRACT DOCUMENTS**

1.3 **B.C. LANDSCAPE ARCHITECTS' ASSOCIATION (LCA) STANDARDS**
1.4 **MAINTENANCE SPECIFICATIONS**

1.5 **STANDARD FOR IRRIGATION SYSTEMS, LATEST EDITION**

1.6 **IRRIGATION, IRRIGATION AND DRAINAGE SYSTEMS**

1.7 **IRRIGATION**

1.8 **IRRIGATION**

1.9 **IRRIGATION**

1.10 **IRRIGATION**

1.11 **IRRIGATION**

1.12 **IRRIGATION**

1.13 **IRRIGATION**

1.14 **IRRIGATION**

1.15 **IRRIGATION**

1.16 **IRRIGATION**

1.17 **IRRIGATION**

1.18 **IRRIGATION**

1.19 **IRRIGATION**

1.20 **IRRIGATION**

1.21 **IRRIGATION**

1.22 **IRRIGATION**

1.23 **IRRIGATION**

1.24 **IRRIGATION**

1.25 **IRRIGATION**

1.26 **IRRIGATION**

1.27 **IRRIGATION**

1.28 **IRRIGATION**

1.29 **IRRIGATION**

1.30 **IRRIGATION**

1.31 **IRRIGATION**

1.32 **IRRIGATION**

1.33 **IRRIGATION**

1.34 **IRRIGATION**

1.35 **IRRIGATION**

1.36 **IRRIGATION**

1.37 **IRRIGATION**

1.38 **IRRIGATION**

1.39 **IRRIGATION**

1.40 **IRRIGATION**

1.41 **IRRIGATION**

1.42 **IRRIGATION**

1.43 **IRRIGATION**

1.44 **IRRIGATION**

PART THREE SOFT LANDSCAPE DEVELOPMENT

3.1 **GENERAL**

3.2 **GENERAL**

3.3 **GENERAL**

3.4 **GENERAL**

3.5 **GENERAL**

3.6 **GENERAL**

3.7 **GENERAL**

3.8 **GENERAL**

3.9 **GENERAL**

3.10 **GENERAL**

3.11 **GENERAL**

3.12 **GENERAL**

3.13 **GENERAL**

3.14 **GENERAL**

3.15 **GENERAL**

3.16 **GENERAL**

3.17 **GENERAL**

3.18 **GENERAL**

3.19 **GENERAL**

3.20 **GENERAL**

3.21 **GENERAL**

3.22 **GENERAL**

3.23 **GENERAL**

3.24 **GENERAL**

3.25 **GENERAL**

3.26 **GENERAL**

3.27 **GENERAL**

3.28 **GENERAL**

3.29 **GENERAL**

3.30 **GENERAL**

3.31 **GENERAL**

3.32 **GENERAL**

3.33 **GENERAL**

3.34 **GENERAL**

3.35 **GENERAL**

3.36 **GENERAL**

3.37 **GENERAL**

3.38 **GENERAL**

3.39 **GENERAL**

3.40 **GENERAL**

3.41 **GENERAL**

3.42 **GENERAL**

PART THREE SOFT LANDSCAPE DEVELOPMENT - CONT

3.1 **GENERAL**

3.2 **GENERAL**

3.3 **GENERAL**

3.4 **GENERAL**

3.5 **GENERAL**

3.6 **GENERAL**

3.7 **GENERAL**

3.8 **GENERAL**

3.9 **GENERAL**

3.10 **GENERAL**

3.11 **GENERAL**

3.12 **GENERAL**

3.13 **GENERAL**

3.14 **GENERAL**

3.15 **GENERAL**

3.16 **GENERAL**

3.17 **GENERAL**

3.18 **GENERAL**

3.19 **GENERAL**

3.20 **GENERAL**

3.21 **GENERAL**

3.22 **GENERAL**

3.23 **GENERAL**

3.24 **GENERAL**

3.25 **GENERAL**

3.26 **GENERAL**

3.27 **GENERAL**

3.28 **GENERAL**

3.29 **GENERAL**

3.30 **GENERAL**

3.31 **GENERAL**

3.32 **GENERAL**

3.33 **GENERAL**

3.34 **GENERAL**

3.35 **GENERAL**

3.36 **GENERAL**

3.37 **GENERAL**

3.38 **GENERAL**

3.39 **GENERAL**

3.40 **GENERAL**

3.41 **GENERAL**

3.42 **GENERAL**

PART THREE SOFT LANDSCAPE DEVELOPMENT - CONT

3.1 **GENERAL**

3.2 **GENERAL**

3.3 **GENERAL**

3.4 **GENERAL**

3.5 **GENERAL**

3.6 **GENERAL**

3.7 **GENERAL**

3.8 **GENERAL**

3.9 **GENERAL**

3.10 **GENERAL**

3.11 **GENERAL**

3.12 **GENERAL**

3.13 **GENERAL**

3.14 **GENERAL**

3.15 **GENERAL**

3.16 **GENERAL**

3.17 **GENERAL**

3.18 **GENERAL**

3.19 **GENERAL**

3.20 **GENERAL**

3.21 **GENERAL**

3.22 **GENERAL**

3.23 **GENERAL**

3.24 **GENERAL**

3.25 **GENERAL**

3.26 **GENERAL**

3.27 **GENERAL**

3.28 **GENERAL**

3.29 **GENERAL**

3.30 **GENERAL**

3.31 **GENERAL**

3.32 **GENERAL**

3.33 **GENERAL**

3.34 **GENERAL**

3.35 **GENERAL**

3.36 **GENERAL**

3.37 **GENERAL**

3.38 **GENERAL**

3.39 **GENERAL**

3.40 **GENERAL**

3.41 **GENERAL**

3.42 **GENERAL**

Copyright reserved. This drawing and design is the property of M2 Landscape Architects and may not be reproduced or used for other projects without their permission.



#220 - 26 Lorne Meves
New Westminster, British Columbia
V3M 3L7
Tel: 604.553.0044
Fax: 604.553.0045
Email: office@m2la.com

1. Material Selection and Installation: The contractor shall select and install landscape materials in accordance with the specifications and standards of the LCA. The contractor shall ensure that all materials are of the highest quality and are suitable for the intended use. The contractor shall ensure that all materials are installed in accordance with the specifications and standards of the LCA. The contractor shall ensure that all materials are maintained in accordance with the specifications and standards of the LCA.

2. Maintenance and Care: The contractor shall ensure that all landscape materials are maintained in accordance with the specifications and standards of the LCA. The contractor shall ensure that all materials are watered, fertilized, and pruned in accordance with the specifications and standards of the LCA. The contractor shall ensure that all materials are protected from damage and theft in accordance with the specifications and standards of the LCA.

Table with 4 columns: Date, Rev. No., Description, Status. Rows include 18, 19, 20, 21, 22, 23, 24, 25, 26, 27, 28, 29, 30, 31, 32, 33, 34, 35, 36, 37, 38, 39, 40, 41, 42, 43, 44, 45, 46, 47, 48, 49, 50.

NO. DATE REVISION DESCRIPTION DR.

SCALE:

UNRAWN: DT

DESIGN: DT

CHKD: MTLA

MLZA PROJECT NUMBER: JOB NO. 18-064

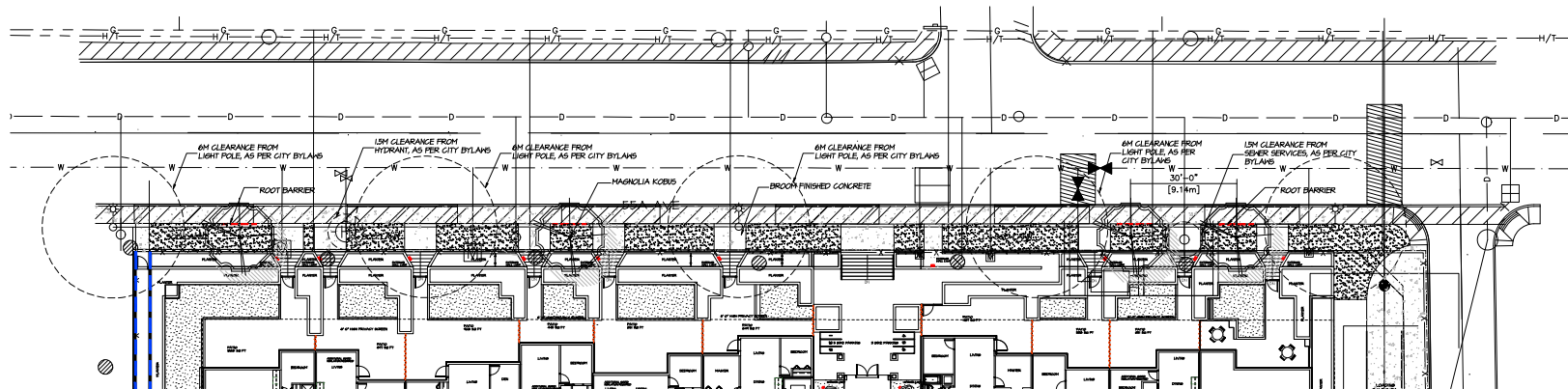
DRAWING TITLE: LANDSCAPE SPECIFICATIONS

DRAWING NUMBER: L7

DATE: (06/10/21)

DRAWING NUMBER: L7

DATE: (06/10/21)



PLANT SCHEDULE -OFF-SITE			M2 JOB NUMBER: 18-084
KEY QTY	BOTANICAL NAME	COMMON NAME	PLANTED SIZE / REMARKS
5	MAGNOLIA KOEUBI	KOBUIS MAGNOLIA	6CM CAL; 2M HT; B&B

NOTES: * PLANT SIZES IN THIS LIST ARE SPECIFIED ACCORDING TO THE BC LANDSCAPE STANDARD, LATEST EDITION. CONTAINER SIZES SPECIFIED AS PER CITY STANDARDS. BOTH PLANT SIZE AND CONTAINER SIZE ARE THE MINIMUM ACCEPTABLE SIZES. * REFER TO SPECIFICATIONS FOR DERIVED CONTAINER MEASUREMENTS AND OTHER PLANT MATERIAL REQUIREMENTS. * SEARCH AND REVIEW MAKE PLANT MATERIAL AVAILABLE FOR OPTIONAL REVIEW BY LANDSCAPE ARCHITECT AT SOURCE OF SUPPLY. * AREA OF SEARCH TO INCLUDE LOWER MAINLAND AND FRASER VALLEY. * SUBSTITUTIONS OBTAIN WRITTEN APPROVAL FROM THE LANDSCAPE ARCHITECT PRIOR TO MAKING ANY SUBSTITUTIONS TO THE SPECIFIED MATERIAL. UNAPPROVED SUBSTITUTIONS WILL BE REJECTED. ALLOW A MINIMUM OF FIVE DAYS PRIOR TO DELIVERY FOR REQUEST TO SUBSTITUTE. SUBSTITUTIONS ARE SUBJECT TO BC LANDSCAPE STANDARD - DEFINITION OF CONDITIONS OF AVAILABILITY.

ALL PLANT MATERIAL MUST BE PROVIDED FROM CERTIFIED DISEASE FREE NURSERY. PROVIDE CERTIFICATION UPON REQUEST.

MINIMUM TREE PLANTING CLEARANCES

Poles

Minimum offset to:			
- Lamp standards	6m	(20)	
- Stoolwood hydro poles	3m	(10)	
- Regulatory Street Signage (oncoming traffic)	6m	(20)	
- Parking meters	0.9m	(3)	

Underground Utilities

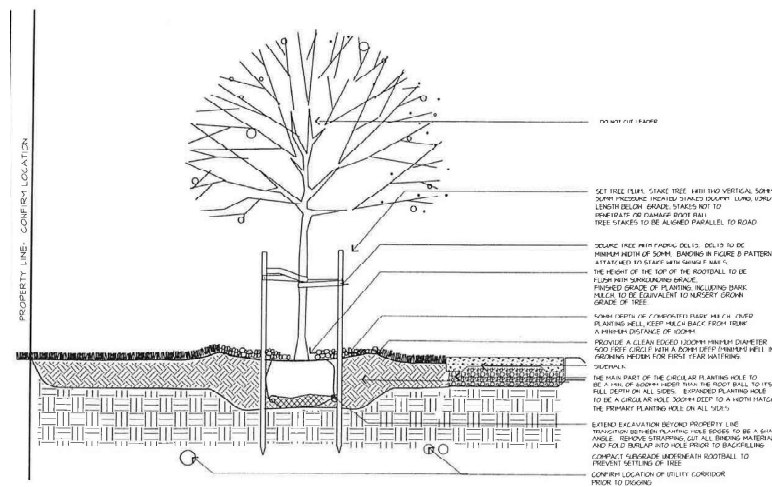
Minimum Offset to:			
- Service connections/manholes and valves	1.2m	(4)	
- Catch Basins	2.0m	(6.5)	
- Sewer Services	1.5m	(5)	
- Utility Mains	0.9m	(3)	
- Hydrants	1.5m	(5)	

ROAD ELEMENTS

Minimum offset to:			
- Curb face	0.75m	(2.5)	
- Sidewalk	0.6m	(2.0)	
- Driveway Crossings	1.8m	(6.0)	
- Corner 8.0m	(26.0)		
- Buildings - (may vary according to species)	3.0m	(10.0)	
- Bus Stops - clearance is from curb face	2.0m	(6.6)	

- DO NOT PLANT TREES**
- Under high voltage transmission lines
 - Under existing canopies or overhead signs
 - In loading zones, taxi pick up zones, police/emergency access zones.

- LANDSCAPE DRAWINGS AND CIVIL DRAWINGS SHALL BE COORDINATED.
 - REFER TO CITY OF LANGLEY'S STREET TREE PROGRAM FOR MATERIALS, INSTALLATION, PLANTING PROCEDURE AND MAINTENANCE



D-03 SECTION D-03 STANDARD TREE PLANTING DETAIL

NOTES:
 FOR USE IN OPEN SPACE AREAS WHERE SOILS HAVE BEEN COMPACTED PRIOR TO PLANTING.
 PROTECT TREES FROM DAMAGE DURING TRANSPORT AND PLANTING. TREE ROOTS NOT TO BE EXPOSED TO SUN OR FROST.
 CONFIRM TREE LOCATION AGAINST ALL REQUIRED OFFSETS.
 ALL STREET TREE PLANTING MUST BE LAD BY HAND AS UNDERGROUND SERVICES MAY EXIST.
 CONFIRM EXISTING TOPSOIL IS SUITABLE FOR REUSE. AN EXISTING MEDIAN, CURBLINE OR ANY OBSTACLE IS NOT AROUND BACKFILL TOPSOIL WITH ORGANIC GROWING MEDIUM TO BE CONTACTED WITH BACKFILL TO ELIMINATE AIR POCKETS.
 CONFIRM TREE DRAINAGE WORK.
 CONTACT PARKS DEPT IF PROBLEM NOTED.

REVISION NUMBER: **D-03**

DATE: 10/11/18
 DRAWN BY: ECM
 DWG NO: 18-084

REVISION DATE

TITLE: STANDARD TREE PLANTING DETAIL

DATE: 10/11/18

THE CITY OF LANGLEY STREET TREE PROGRAM

©Copyright reserved. This drawing and design is the property of M2 Landscape Architects and may not be reproduced or used for other projects without their permission.



#220 - 26 Lorne Mews
 New Westminster, British Columbia
 V3M 3L7
 Tel: 604.553.0044
 Fax: 604.553.0045
 Email: office@m2la.com



NO.	DATE	REVISION DESCRIPTION	DR.
1	10/11/18	PRELIMINARY DESIGN	DY
2	10/11/18	ISSUE FOR DP	DY
3	10/11/18	REVISION AS PER NEW SITE PLAN	DY
4	10/11/18	REVISION AS PER ARCAD COMMENTS	JS
5	10/11/18	REVISION AS PER CITY COMMENTS	DY
6	10/11/18	REVISION AS PER NEW SITE PLAN	DY
7	10/11/18	ISSUE FOR DP	JS
8	10/11/18	REVISION AS PER CITY COMMENTS	DY
9	10/11/18	REVISION AS PER NEW SITE PLAN	DY
10	10/11/18	ISSUE FOR DP	JS
11	10/11/18	REVISION AS PER CITY COMMENTS	DY
12	10/11/18	REVISION AS PER NEW SITE PLAN	DY



PROJECT: **MULTI-RESIDENTIAL DEVELOPMENT**
 19920 & 19970 55A Avenue
 Langley, BC

DRAWING TITLE: **OFF-SITE PLAN**

DATE: 10/11/18	DRAWING NUMBER:
SCALE: 1/8"=1'-0"	L1
DRAWN: DY	
DESIGN: DY	
CHKD: MTLM	

M2LA PROJECT NUMBER: **JOB NO. 18-084**