

WESMONT APARTMENTS EASTLEIGH, 20619 & 20629 EASTLEIGH CRESCENT, LANGLEY, BC



KEYSTONE
ARCHITECTURE

300 - 33131 | SOUTH FRASER WAY, ABBOTSFORD BC
V2S 2B1 | 604.850.0577
410 - 333 | 117th AVENUE SW, CALGARY AB
T2R 1L9 | 587.291.4768
INFO@KEYSTONEARCH.CA



LANDSCAPE ARCHITECTURE DIVISION

ISSUED FOR
DEVELOPMENT
PERMIT

NO.	ISSUE/REVISION	DATE
1	ISSUED FOR DP	07-28-23
2	RE-ISSUED FOR DP	09-26-23
3	RE-ISSUED FOR DP	10-05-23
4	RE-ISSUED FOR DP	11-06-23

WESMONT
APARTMENTS
EASTLEIGH

20619 & 20629 EASTLEIGH CRESCENT,
LANGLEY, BC

PROJECT # 23112
CITY FILE #



COVER SHEET

SHEET SCHEDULE

Sheet Number	Sheet Title
L-0.00	COVER SHEET
L-1.01	SITE PLAN
L-1.02	PODIUM PLAN
L-1.03	GRADING PLANS
L-1.04	OFF-SITE PLAN
L-2.00	PLANTING PRECEDENTS
L-2.01	SITE PLANTING PLAN
L-2.02	PODIUM PLANTING PLAN

DESIGN RATIONALE

THE LANDSCAPE OF WESMONT APARTMENTS ON EASTLEIGH IS DESIGNED TO REFLECT AN INDUSTRIAL, MODERN, AND SLEEK LEXICAL WITH BUNKS UP LUXURY THROUGH PLAN MATERIAL. THE SITE PLAN SHOWCASES APARTMENTS THAT HAVE A CONNECTION TO EASTLEIGH CRESCENT WITH AN EDGE DEFINED BY SMOOTH FINISH CONCRETE WALLS WITH LARGE REVEALS THAT COMPLEMENT A DECORATIVE CABLE FENCING THAT VISUALLY SEPARATES PUBLIC AND PRIVATE SPACES. UNIT ADDRESSES AND ASSOCIATED LIGHTING WILL ALSO STRENGTHEN THE ROAD FRONTAGE CONNECTION. FINALLY A CANOPY OF FRUIT TREES WITH AN UNDERSTOREY OF EDIBLES CONNECTS THE SURFACE PARKING LOT TO THE STREET.

THE OUTDOOR AMENITY SPACE CAN BE EXPLORED ON THE SECOND LEVEL WHERE STRONG CONNECTIONS HAVE BEEN MADE BETWEEN THE INDOOR AND OUTDOOR AMENITY SPACES WITH DOORS EXITING OUT TO AN OUTDOOR BBQ AREA FROM THE INTERIOR KITCHEN SPACE, AND AN OUTDOOR WORKOUT SPACE CONNECTED TO THE INDOOR GYM. ADDITIONAL AMENITIES INCLUDE A CHILDREN'S PLAY AREA, A DOG RUN, AND A FIRE PIT GATHERING SPACE. DUE TO PRIMARILY A NORTHERN EXPOSURE, A STRONG EMPHASIS WILL BE PUT ON ENHANCING THE SPACE WITH LUSH, SHADE-LOVING PLANTS THAT WILL MAKE THE SPACES FEEL INVITING AND INTENTIONAL.

WESMONT

T 604.371.0250

111 - 23189 FRANCIS AVENUE
LANGLEY, BC V1M 0G4



KEYSTONE ARCHITECTURE & PLANNING LTD.

T 604.850.0577
F 1.855.398.4578
T 587.291.4768

300 - 33131 SOUTH FRASER WAY
ABBOTSFORD, BC V2S 2B1
410 - 222 11TH AVENUE SW,
CALGARY, AB T2R 1L9

E-MAIL: MAIL@KEYSTONEARCH.CA
WEBSITE: KEYSTONEARCH.CA

KEYSTONE
ARCHITECTURE

LANDSCAPE ARCHITECTURE DIVISION

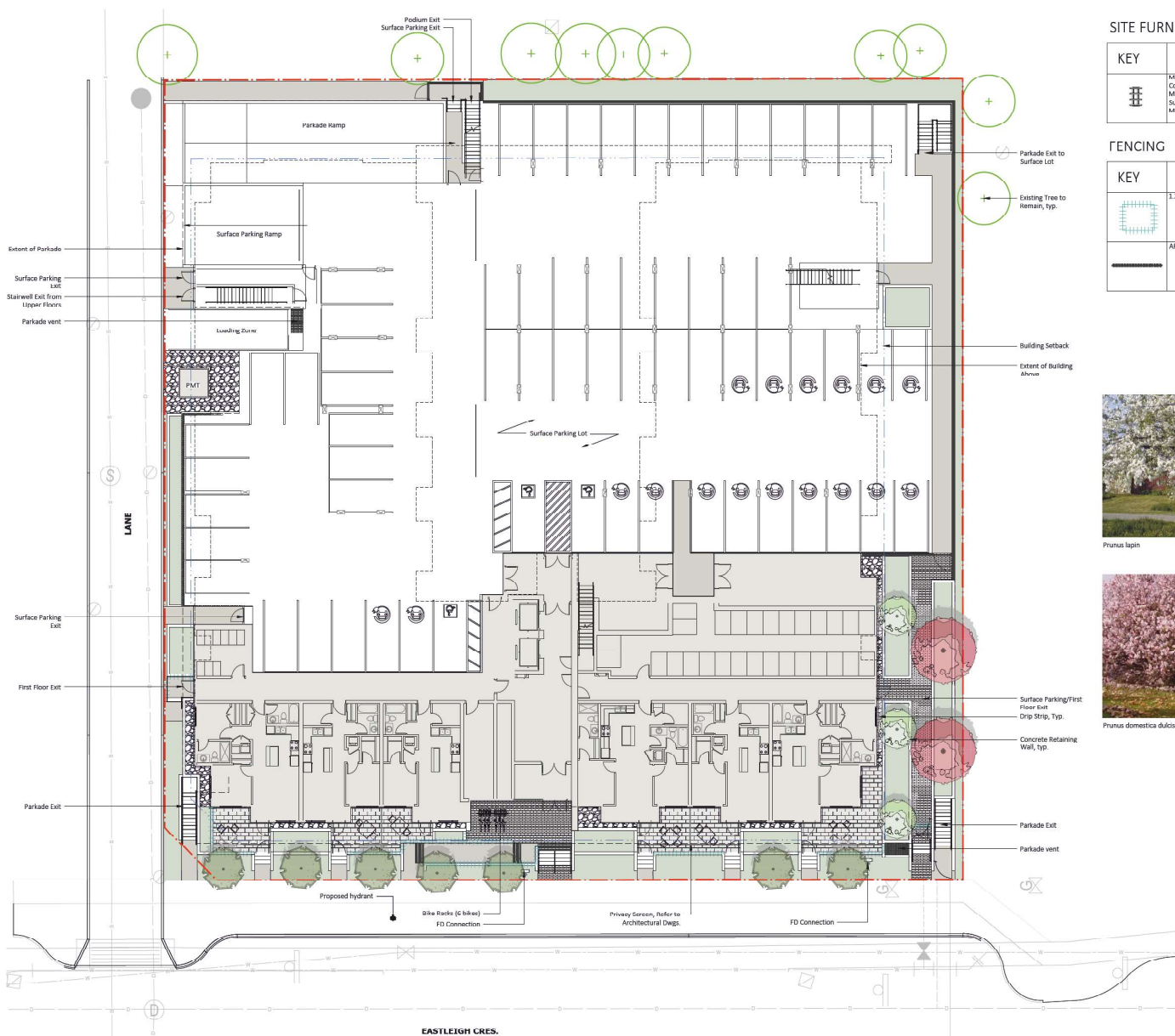
T 604.850.0577 EXT. 216

300 - 33131 SOUTH FRASER WAY
ABBOTSFORD, BC V2S 2B1

E-MAIL: JENNIFER@KEYSTONEARCH.CA

SCALE

L-0.00



SITE FURNISHINGS

KEY	DESCRIPTION
	MAGLIN 350 BIKE RACK COLOUR: TBD Manufacturer: MAGLIN SITE FURNISHINGS Supplier: MAGLIN SITE FURNISHINGS Minimum: 12 WEEKS

FENCING

KEY	DESCRIPTION
	1.2m HIGH DECORATIVE CABLE FENCE
	ARCHITECTURAL GUARDRAIL



Prunus lapin



Prunus domestica dulcis 'Hall's Hardy'

HARDSCAPE MATERIALS

KEY	DESCRIPTION
	FLOOR PAVERS Size: 75 x 450 x 100mm Colour: NATURAL (90%) + CHARCOAL (10%) Manufacturer: BASALTE
	HAMPION CONCRETE SLABS Size: 606 x 301 x 50.8mm Colour: WHITE Manufacturer: NEWSTONE GROUP
	CONCRETE RETAINING WALL

SOFTSCAPE MATERIALS

KEY	DESCRIPTION
	SHRUB PLANTING GROWING MEDIUM SHRUBS - 450mm MIN. DEPTH TREES - 900mm MIN. DEPTH
	GRANULAR DRIP STRIP



Tilia cordata 'Summer Sprite'



Decorative Cable Fence Precursor



Maglin 350 Bike Rack

TREE LEGEND

Prunus lapin	Prunus domestica dulcis 'Hall's Hardy'	Tilia cordata 'Summer Sprite'	Existing Tree

TREE SCHEDULE

QUAN	BOTANICAL NAME	COMMON NAME	SIZE
2	Prunus domestica dulcis 'Hall's Hardy'	Hall's Hardy Almond	845, 65m cal.
3	Prunus lapin	Lapin Sweet Cherry	845, 65m cal.
8	Tilia cordata 'Summer Sprite'	Summer Sprite Linden	845, 65m cal.



ISSUED FOR DEVELOPMENT PERMIT

NO.	ISSUE/REVISION	DATE
1	ISSUED FOR DP	07-28-23
2	RE-ISSUED FOR DP	09-26-23
3	RE-ISSUED FOR DP	10-05-23
4	RE-ISSUED FOR DP	11-06-23

WESMONT APARTMENTS FASTFIGH

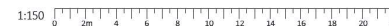
20619 & 20629 EASTLEIGH CRESCENT,
LANGLEY, BC

PROJECT # 23112
CITY FILE #



SITE PLAN

SCALE 1:150



HARDSCAPE MATERIALS

KEY	DESCRIPTION
	PLANK PAVER Size: 72 x 400 x 100mm Colour: NATURAL (90%) + CHARCOAL (10%) Manufacturer: BASALITE
	HAMPTON CONCRETE SLABS Size: 606 x 301 x 50.8mm Colour: WHITE Manufacturer: NEWSTONE GROUP
	RUBBER PLAYTILES Colour: 100% RECYCLED BLACK Manufacturer: DINFLEX Supplier: HABITAT SYSTEMS
	CONCRETE RETAINING WALL



WOOD FENCE WITH WELDED WIRE MESH PRECEDENT



KOMPAN DOUBLE TOWER WITH BRIDGE



GRAVEL IN CONNER MAZE

ROMEX PRO FLOOR - WHITE HAMPTON SLAB



NATURAL PLANK PAVER - CHARCOAL PLANK PAVER

SOFTSCAPE MATERIALS

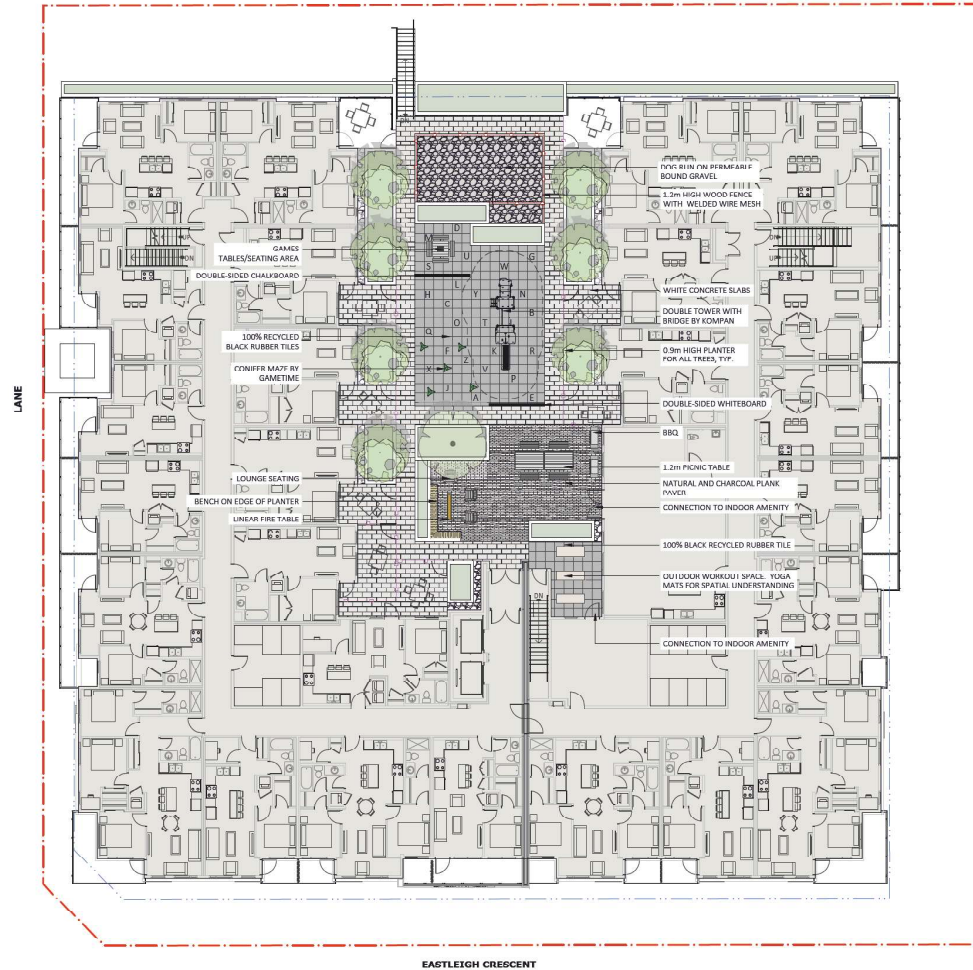
KEY	DESCRIPTION
	SHRUB PLANTING FORM: 100% PERMEABLE SHRUBS - 450mm MIN. DEPTH TREES - 900mm MIN. DEPTH
	GRANULAR DRIP STRIP
	SOD
	RECYCLED PAVEMENT Product: Rompac - Profi-Deko Manufacturer: Romex

SITE FURNISHINGS

KEY	DESCRIPTION
	MAGLIN LEXION 4 TABLE Colour: TBD Manufacturer: MAGLIN SITE FURNISHINGS Supplier: MAGLIN SITE FURNISHINGS Mount: SURFACE
	MAGLIN 755 CHAIR Colour: TBD Manufacturer: MAGLIN SITE FURNISHINGS Supplier: MAGLIN SITE FURNISHINGS Mount: SURFACE
	MAGLIN 1100 GAME TABLE Colour: TBD Manufacturer: MAGLIN SITE FURNISHINGS Supplier: MAGLIN SITE FURNISHINGS Mount: SURFACE

FENCING

KEY	DESCRIPTION
	1.2M HIGH FENCE
	ARCHITECTURAL GUARDRAIL
	1.2M WOOD FENCE WITH WELDED WIRE MESH



EASTLEIGH CRESCENT

1:150 0 2m 4m 6m 8m 10m 12m 14m 16m 18m 20m 25



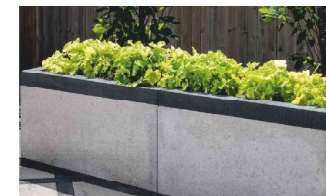
MAGLIN 1.2M IRONIC TABLE



MAGLIN LOUNGE SEATING



SOLISUNAR FIRE TABLE



ARTFORM PRECAST PLANTER WALLS

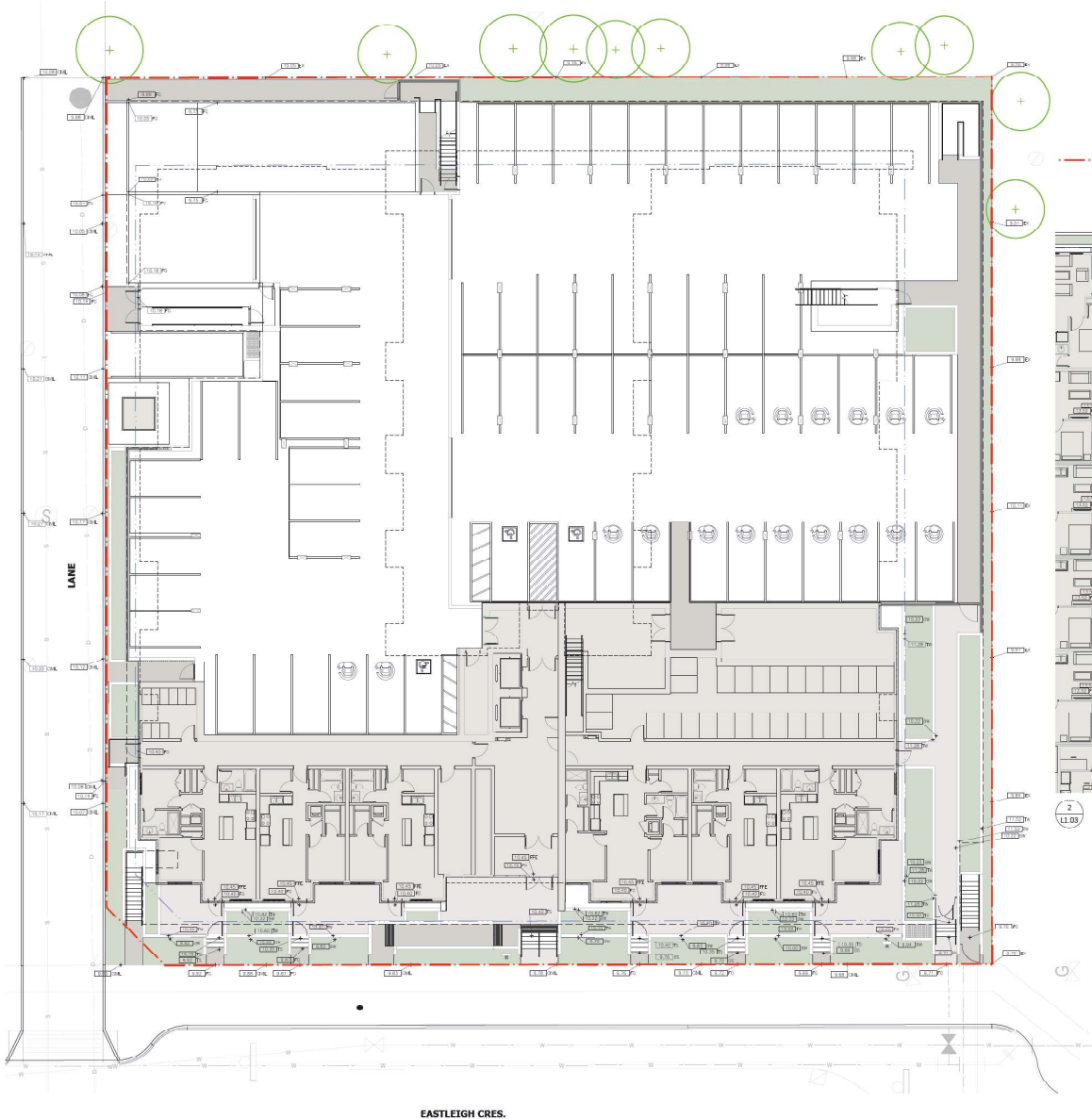


FIRE PIT SPATIAL PRECEDENT

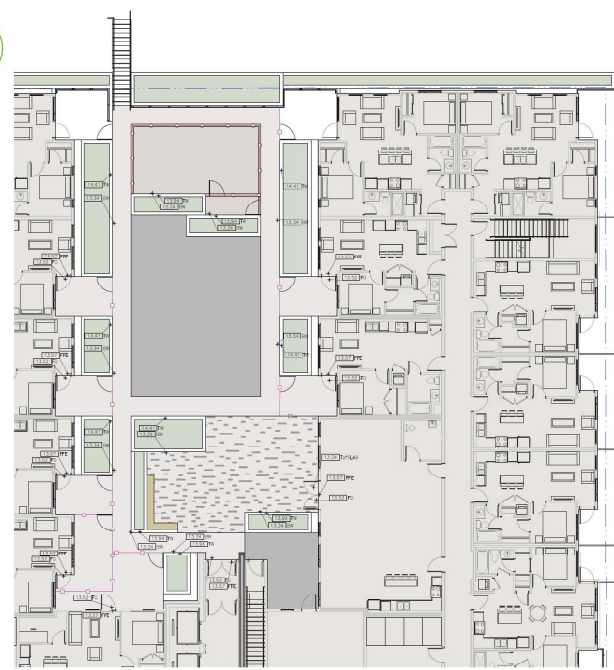


NO.	ISSUE/REVISION	DATE
1	ISSUED FOR NP	07-28-23
2	RE-ISSUED FOR DP	09-26-23
3	RE-ISSUED FOR DP	10-05-23
4	RE-ISSUED FOR DP	11-06-23





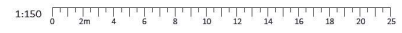
1
L1.03
SITE GRADING PLAN
Scale 1:150



2
L1.03
PODIUM GRADING PLAN
Scale 1:150

GRADING LEGEND

KEY	DESCRIPTION
	FINISHED FLOOR ELEVATION
	FINISHED GRADE
	TOP OF WALL
	BOTTOM OF WALL
	TOP OF STAIR
	BOTTOM OF STAIR
	TOP OF SLAB
	PROPOSED GRADE BY CIVIL
	EXISTING GRADE



LANDSCAPE ARCHITECTURE DIVISION
ISSUED FOR DEVELOPMENT PERMIT

NO.	ISSUE/REVISION	DATE
1	ISSUED FOR DP	07-28-23
2	RE-ISSUED FOR DP	09-26-23
3	RE-ISSUED FOR DP	10-05-23
4	RE-ISSUED FOR DP	11-06-23

WESMONT APARTMENTS FASTIFIGH

20619 & 20629 EASTLEIGH CRESCENT,
LANGLEY, BC

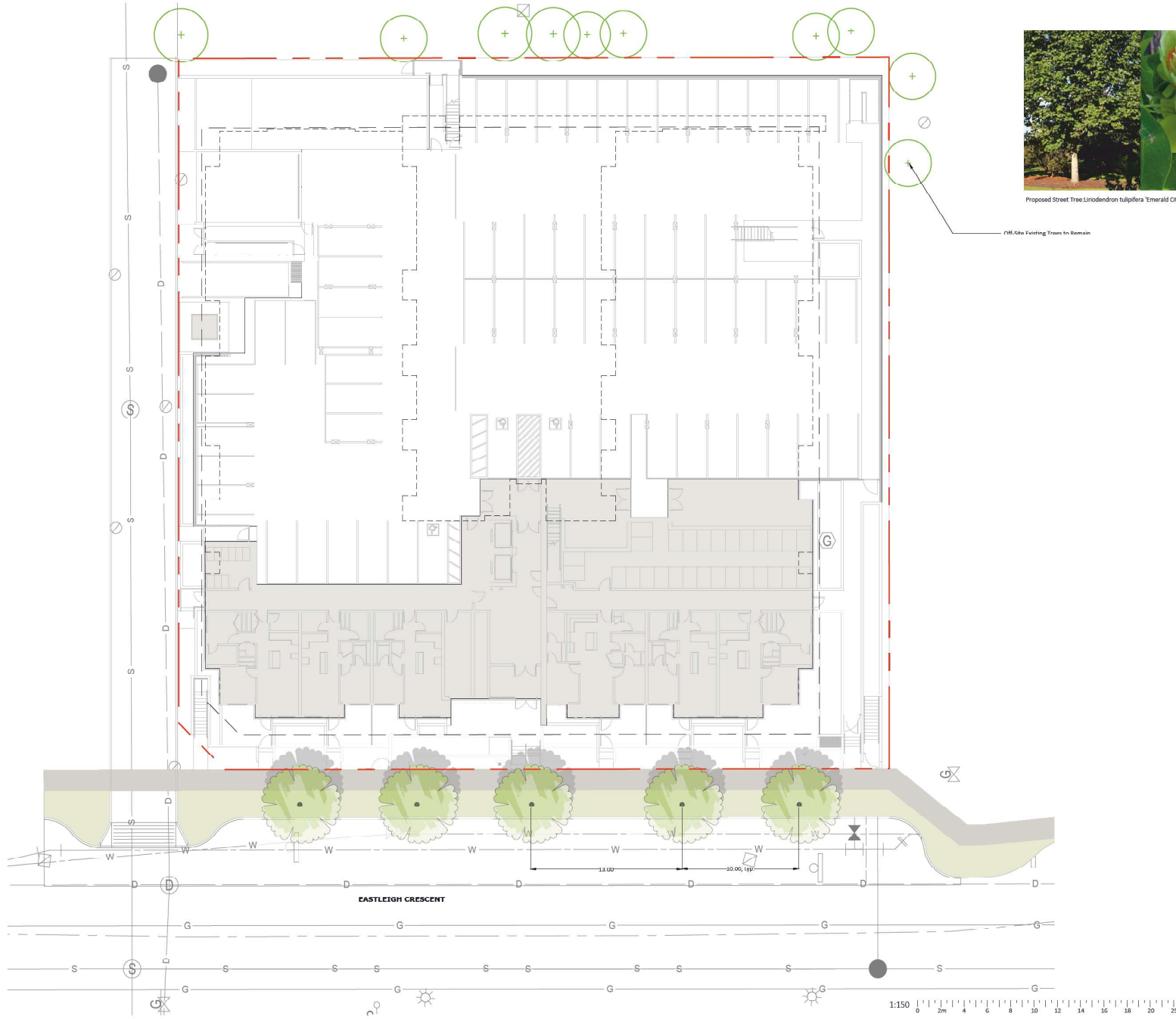
PROJECT # 23112
CITY FILE #



GRADING PLANS

SCALE 1:150





Proposed Street Tree *Linodendron tulipifera* 'Emerald City'

Site Existing Trees To Remain



LANDSCAPE ARCHITECTURE DIVISION

**ISSUED FOR
DEVELOPMENT
PERMIT**

NO.	ISSUE/REVISION	DATE
1	ISSUED FOR DP	07-28-23
2	RE-ISSUED FOR DP	09-26-23
3	RE-ISSUED FOR DP	10-05-23
4	RE-ISSUED FOR DP	11-06-23

**WESMONT
APARTMENTS
FASTFIGH**

20619 & 20629 EASTLEIGH CRESCENT,
LANGLEY, BC

PROJECT # 23112
CITY FILE #



OFF-SITE PLAN

SCALE 1:150





LANDSCAPE ARCHITECTURE DIVISION

**ISSUED FOR
DEVELOPMENT
PERMIT**

NO.	ISSUE/REVISION	DATE
1	ISSUED FOR DP	07-28-23
2	RE-ISSUED FOR DP	09-26-23
3	RE-ISSUED FOR DP	10-05-23
4	RE-ISSUED FOR DP	11-06-23



HYDRANGEA



LIRIOPE



RHODODENDRON



CARYOPTERIS



LAVANDULA



VACCINIUM



AZALEA



ERICA



HYDRANGEA



HMFROCALIIS



IFICOTHOF



ROSA



AZALEA



WFIGFIA



FRAGARIAS



KAI MITA



SANGUISORBA



VACCINIUM



PANICUM



NANDINA



ORIGANUM



CAREX



CORNUS



ENKIANTHUS



ARCHITECTURAL PALETTE



TELLIMA



ASPLENIUM



ILEX

**WESMONT
APARTMENTS
FASTI FIGH**

20619 & 20629 EASTLEIGH CRESCENT,
LANGLEY, BC

PROJECT # 23112
CITY FILE #



**PLANTING
PRECEDENTS**

SCALE N.T.S.



LANDSCAPE ARCHITECTURE DIVISION

ISSUED FOR
DEVELOPMENT
PERMIT

NO.	ISSUE/REVISION	DATE
1	ISSUED FOR DP	07-28-23
2	RE-ISSUED FOR DP	09-26-23
3	RE-ISSUED FOR DP	10-05-23
4	RE-ISSUED FOR DP	11-06-23

WESMONT
APARTMENTS
FASTIFIGH

20619 & 20629 EASTLEIGH CRESCENT,
LANGLEY, BC

PROJECT # 23112
CITY FILE #

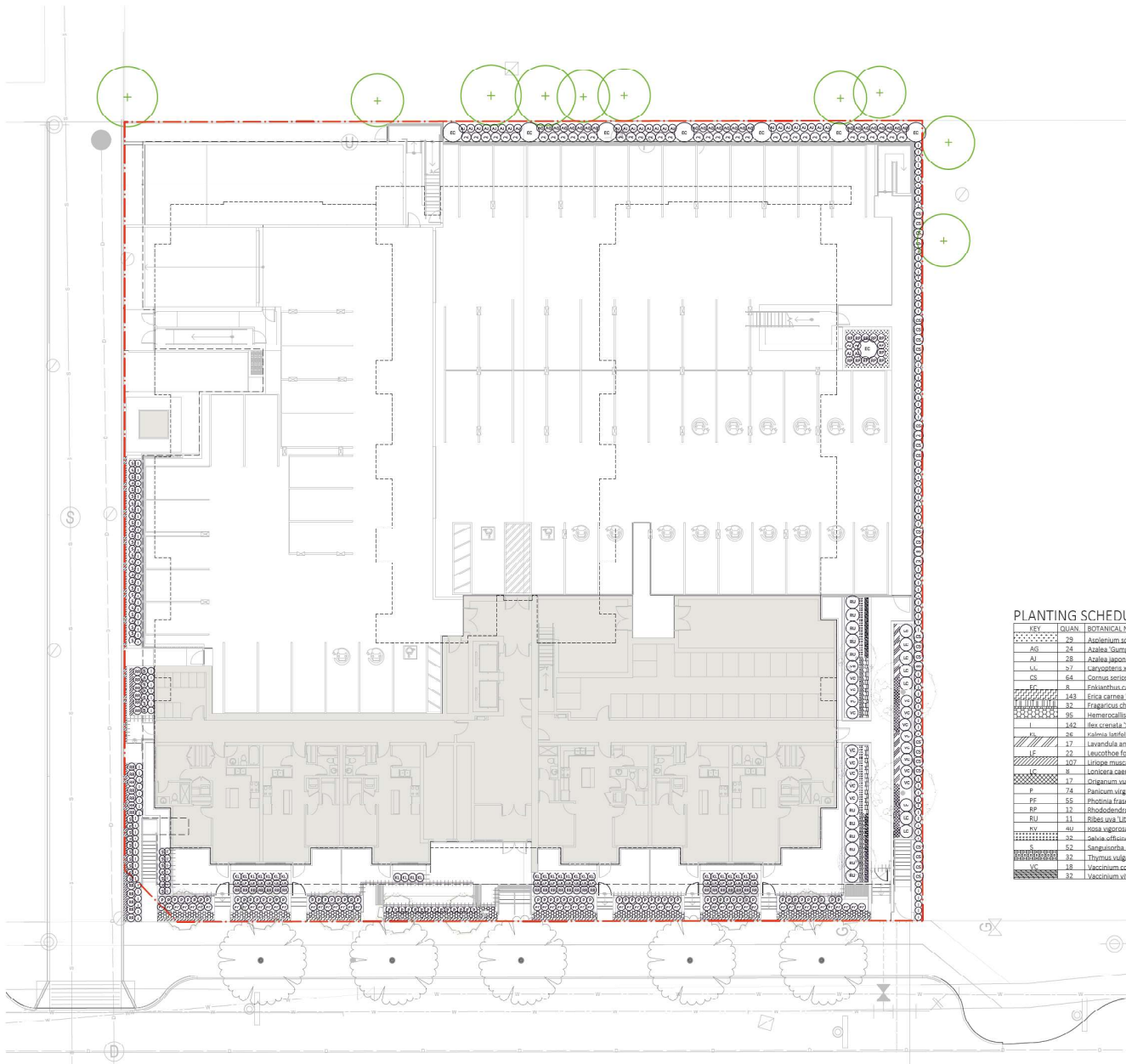


SITE PLANTING
PLAN

SCALE 1:150



L-2.01



PLANTING SCHEDULE

KEY	QUAN	BOTANICAL NAME	COMMON NAME	SIZE
[Symbol]	28	Asplenium scolopendrium	Hart's Tongue Fern	No. 1 Pot
[Symbol]	24	Azalea japonica 'White'	Gumpo White Azalea	No. 3 Pot
[Symbol]	28	Azalea japonica 'Fridoline'	Fridoline Azalea	No. 3 Pot
[Symbol]	37	Larix laricina 'Seymour Midget'	Seymour Midget Bluebeard	No. 4 Pot
[Symbol]	60	Cornus sericea 'Yellow'	Yellow Dwarf Dogwood	No. 3 Pot
[Symbol]	8	Fuchsia campanulata	Red vein Fuchsia	No. 10 Pot
[Symbol]	143	Erica carnea 'Springwood White'	Springwood White Heather	No. 1 Pot
[Symbol]	37	Fragaria chiloensis	Beach Strawberry	No. 1 Pot
[Symbol]	96	Hemerocallis 'Moonlit Masquerade'	Moonlit Masquerade Daylily	No. 1 Pot
[Symbol]	142	Ilex crenata 'Sky Parasol'	Sky Parasol Japanese Holly	No. 5 Pot
[Symbol]	26	Jasminum sambac 'Yulan'	Minuet Mandarin Jasmin	No. 3 Pot
[Symbol]	17	Lavandula angustifolia 'Munstead'	Munstead English Lavender	No. 1 Pot
[Symbol]	22	Leucothoe fontanesiana 'Rainbow Improved'	Rainbow Improved Leucothoe	No. 3 Pot
[Symbol]	107	Liriodendron 'Big Blue'	Big Blue Liriodendron	No. 1 Pot
[Symbol]	4	Lonicera caerulea 'Vegetarian Sugar Pie'	Honeybee Honeysuckle	No. 3 Pot
[Symbol]	17	Oreganum vulgare	Greek Oregano	No. 1 Pot
[Symbol]	74	Panicum virgatum 'Prairie Flame'	Prairie Flame Switch Grass	No. 1 Pot
[Symbol]	55	Phlox paniculata 'Fire Fantasy'	Fire Fantasy Phlox	No. 3 Pot
[Symbol]	12	Rhododendron 'Purple Gem'	Purple Gem Rhododendron	No. 3 Pot
[Symbol]	11	Ribes ssp. 'Little Ben'	Little Ben Gooseberry	No. 3 Pot
[Symbol]	40	Rosa rugosa 'Ice Ribbon'	Ice Ribbon Rose	No. 1 Pot
[Symbol]	32	Sedum officinale 'Tricolor'	Tricolor Sage	No. 1 Pot
[Symbol]	52	Sanguinaria officinalis 'Tanna'	Tanna Great Burnet	No. 1 Pot
[Symbol]	38	Thymus vulgaris	Garden Thyme	No. 1 Pot
[Symbol]	18	Vaccinium corymbosum 'North Country'	North Country Blueberry	No. 3 Pot
[Symbol]	32	Vaccinium vitis-idaea	Ligonberry	No. 1 Pot



LANDSCAPE ARCHITECTURE DIVISION

ISSUED FOR
DEVELOPMENT
PERMIT

NO.	ISSUE/REVISION	DATE
1	ISSUED FOR DP	07-28-23
2	RE-ISSUED FOR DP	09-26-23
3	RE-ISSUED FOR DP	10-05-23
4	RE-ISSUED FOR DP	11-06-23

WESMONT
APARTMENTS
FASTIFIGH

20619 & 20629 EASTLEIGH CRESCENT,
LANGLEY, BC

PROJECT # 23112
CITY FILE #



PODIUM PLANTING
PLAN

SCALE 1:150



L-2.02

PLANTING SCHEDULE

KEY	QUAN.	BOTANICAL NAME	COMMON NAME	SIZE
.....	121	<i>Asplenium adnigrum</i> (fern)	Mini's Turage Fern	No. 3 Pot.
AG	6	<i>Asalea 'Gumpo White'</i>	Gumpo White Asalea	No. 3 Pot.
HOH	54	<i>Carex oshimensis</i> 'Everlime'	Everlime Japanese Sedge	No. 3 Pot.
HA	5	<i>Hydrangea arborescens</i> 'Innochee Wae White'	Innochee Wae White hydrangea	No. 3 Pot.
HM	41	<i>Hydrangea macrophylla</i> 'Wae BT Grumpy'	Wae BT Gumpo Hydrangea	No. 3 Pot.
LC	50	<i>Leucothoe fontaniana</i> 'Rainbow Improved'	Rainbow Improved Leucothoe	No. 3 Pot.
PD	93	<i>Heandine domestica</i> 'Tropaeo'	Tropaeo's Heandine Bambusa	No. 3 Pot.
RP	16	<i>Rhododendron</i> 'Purple Gem'	Purple Gem Rhododendron	No. 3 Pot.
.....	56	<i>Tillima grandiflora</i>	Fringecop	No. 3 Pot.
.....	20	<i>Waigala Florida</i> 'Midnight Sun'	Midnight Sun Waigala	No. 2 Pot.

