

**PLANT SCHEDULE** PMG PROJECT NUMBER: 20-087 GROUND FLOOR

KEY	QTY	BOTANICAL NAME	COMMON NAME	PLANTED SIZE / REMARKS
TREE	8	CERCIS CANADENSIS 'FOREST PANSY'	FOREST PANSY REDBUD	5CM CAL; B&B
SHRUB	5	STYRAX JAPONICUS 'PINK CHIMES'	PINK FLOWERED JAPANESE SNOWBELL	6CM CAL; 1.8M STD; B&B
B	113	BUXUS MICROPHYLLA 'WINTER GEM'	LITTLE-LEAF BOX	#3 POT; 40CM
R	3	RHODODENDRON 'PURPLE SPLENDOR'	RHODODENDRON; DARK PURPLE; L. MAY	#3 POT; 50CM 80CM B&B
R01	52	ROSA MEIDLAND 'FERDY'	MEIDLAND ROSE; CORAL PINK	#2 POT; 40CM
S	10	SKIMMIA JAPONICA (10% MALE)	JAPANESE SKIMMIA	#3 POT; 50CM
T	28	SPIRAEA JAPONICA 'LITTLE PRINCESS'	LITTLE PRINCESS SPIRAEA; PINK	#2 POT; 40CM
T	149	TAXUS X MEDIA 'HICKSII'	HICK'S YEWS	#3 POT; 80CM
GRASS	42	CAREX OSHIMENSIS 'EVERGOLD'	EVERGOLD JAPANESE SEDGE	#1 POT
C	41	HAKONECHLOA MACRA 'AUREOLA'	GOLD VARIEGATED JAPANESE FOREST GRASS	#1 POT
PO	7	PENNISETUM ORIENTALE	ORIENTAL FOUNTAIN GRASS	#1 POT
PERENNIAL	34	IBERIS SEMPERVIRENS 'SNOWFLAKE'	SNOWFLAKE EVERGREEN CANDYTUFT	9CM POT

NOTES: \* PLANT SIZES IN THIS LIST ARE SPECIFIED ACCORDING TO THE BC LANDSCAPE STANDARD AND CANADIAN LANDSCAPE STANDARD, LATEST EDITION. CONTAINER SIZES SPECIFIED AS PER CNLA STANDARD. BOTH PLANT SIZE AND CONTAINER SIZE ARE THE MINIMUM ACCEPTABLE SIZES. \* REFER TO SPECIFICATIONS FOR DEFINED CONTAINER MEASUREMENTS AND OTHER PLANT MATERIAL REQUIREMENTS. \* SEARCH AND REVIEW: MAKE PLANT MATERIAL AVAILABLE FOR OPTIONAL REVIEW BY LANDSCAPE ARCHITECT AT SOURCE OF SUPPLY. AREA OF SEARCH TO INCLUDE LOWER MAINLAND AND FRASER VALLEY. \* SUBSTITUTIONS: OBTAIN WRITTEN APPROVAL FROM THE LANDSCAPE ARCHITECT PRIOR TO MAKING ANY SUBSTITUTIONS TO THE SPECIFIED MATERIAL. UNAPPROVED SUBSTITUTIONS WILL BE REJECTED. ALLOW A MINIMUM OF FIVE DAYS PRIOR TO DELIVERY FOR REQUEST TO SUBSTITUTE. SUBSTITUTIONS ARE SUBJECT TO BC LANDSCAPE STANDARD AND CANADIAN LANDSCAPE STANDARD - DEFINITION OF CONDITIONS OF AVAILABILITY. ALL LANDSCAPE MATERIAL AND WORKMANSHIP MUST MEET OR EXCEED BC LANDSCAPE STANDARD AND CANADIAN LANDSCAPE STANDARD LATEST EDITION. ALL PLANT MATERIAL MUST BE PROVIDED FROM CERTIFIED DISEASE FREE NURSERY

NO.	DATE	REVISION DESCRIPTION	DR.
3	21.MR.01	UPDATED SITE PLAN	MM
2	21.JAN.27	NEW SITE PLAN	MM
1	21.JAN.21	NEW SITE PLAN	MM

NO.	DATE	REVISION DESCRIPTION	DR.
3	21.MR.01	UPDATED SITE PLAN	MM
2	21.JAN.27	NEW SITE PLAN	MM
1	21.JAN.21	NEW SITE PLAN	MM

CLIENT:

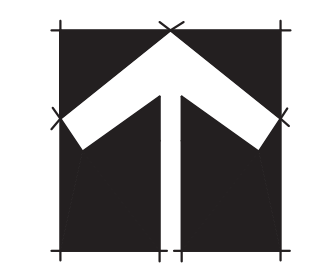
PROJECT:  
**PROPOSED RESIDENTIAL DEVELOPMENT**

5394-5402 207 STREET  
CITY OF LANGLEY, B.C.

DRAWING TITLE:  
**LANDSCAPE PLAN**

DATE: 20.OCT.13 DRAWING NUMBER:  
SCALE: 1/16"=1'-0"  
DRAWN: MM  
DESIGN: MM  
CHK'D: PCM

**L1**  
OF 4

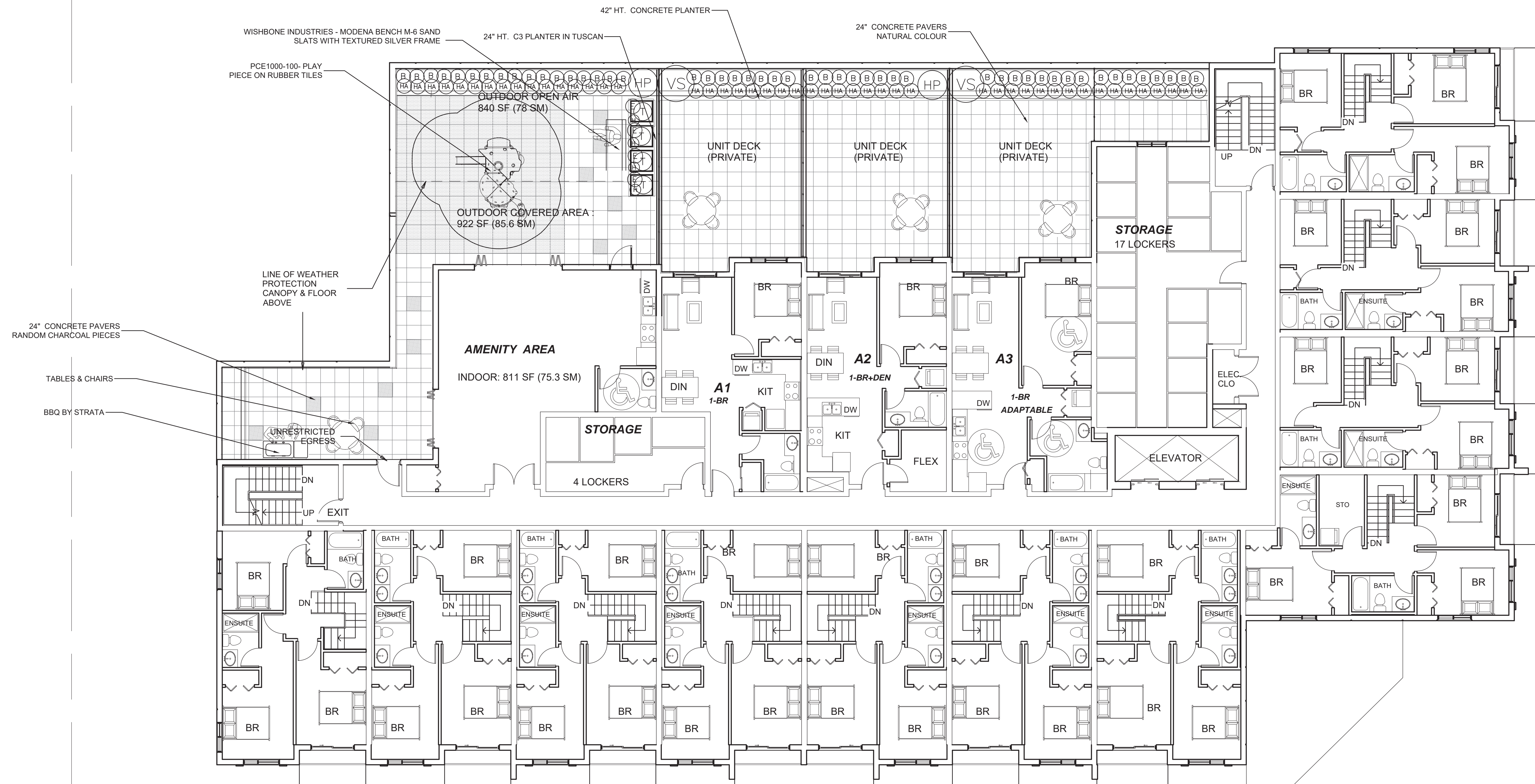


SEAL:



PLANT SCHEDULE				PMG PROJECT NUMBER: 20-087 SECOND FLOOR
KEY	QTY	BOTANICAL NAME	COMMON NAME	PLANTED SIZE / REMARKS
<b>SHRUB</b>				
(B)	49	BUXUS MICROPHYLLA 'WINTER GEM'	LITTLE-LEAF BOX	#3 POT; 40CM
(HP)	2	HYDRANGEA PANICULATA 'LIMELIGHT'	LIMELIGHT HYDRANGEA; LIMEGREEN-PINK	#2 POT; 50CM
(T)	4	TAXUS X MEDIA 'HICKSII'	HICK'S YEW	#3 POT; 80CM
(VS)	2	VIBURNUM P.T. 'SUMMER SNOWFLAKE'	SUMMER SNOWFLAKE VIBURNUM	#3 POT; 60CM
<b>GRASS</b>				
(HA)	48	HAKONECHLOA MACRA 'AUREOLA'	GOLD VARIEGATED JAPANESE FOREST GRASS	#1 POT
<b>PERENNIAL</b>				
(H)	4	HEUCHERA MACRANTHA 'PALACE PURPLE'	CORAL BELLS; PURPLE-RED	15CM POT
(E)	2	EUONYMUS JAPONICA 'EMERALD GAITY'	EUONYMUS; SILVER VARIEGATED	#1 POT; 25CM #2 POT; 40CM

NOTES: \* PLANT SIZES IN THIS LIST ARE SPECIFIED ACCORDING TO THE BC LANDSCAPE STANDARD AND CANADIAN LANDSCAPE STANDARD, LATEST EDITION. CONTAINER SIZES SPECIFIED AS PER CNLA STANDARD. BOTH PLANT SIZE AND CONTAINER SIZE ARE THE MINIMUM ACCEPTABLE SIZES. \* REFER TO SPECIFICATIONS FOR DEFINED CONTAINER MEASUREMENTS AND OTHER PLANT MATERIAL REQUIREMENTS. \* SEARCH AND REVIEW: MAKE PLANT MATERIAL AVAILABLE FOR OPTIONAL REVIEW BY LANDSCAPE ARCHITECT AT SOURCE OF SUPPLY. AREA OF SEARCH TO INCLUDE LOWER MAINLAND AND FRASER VALLEY. \* SUBSTITUTIONS: OBTAIN WRITTEN APPROVAL FROM THE LANDSCAPE ARCHITECT PRIOR TO MAKING ANY SUBSTITUTIONS TO THE SPECIFIED MATERIAL. UNAPPROVED SUBSTITUTIONS WILL BE REJECTED. ALLOW A MINIMUM OF FIVE DAYS PRIOR TO DELIVERY FOR REQUEST TO SUBSTITUTE. SUBSTITUTIONS ARE SUBJECT TO BC LANDSCAPE STANDARD AND CANADIAN LANDSCAPE STANDARD. DEFINITION OF CONDITIONS OF AVAILABILITY. ALL LANDSCAPE MATERIAL AND WORKMANSHIP MUST MEET OR EXCEED BC LANDSCAPE STANDARD AND CANADIAN LANDSCAPE STANDARD LATEST EDITION. ALL PLANT MATERIAL MUST BE PROVIDED FROM CERTIFIED DISEASE FREE NURSERY



NO.	DATE	REVISION DESCRIPTION	DR.
2	21.MR.01	UPDATED 2ND FLOOR	MM
1	21.JAN.21	UPDATED SECOND FLOOR	MM

CLIENT:

PROJECT:

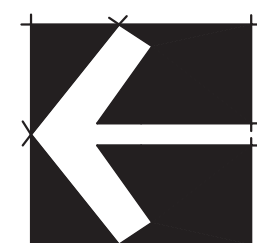
**PROPOSED RESIDENTIAL DEVELOPMENT**

5394-5402 207 STREET  
CITY OF LANGLEY, B.C.

DRAWING TITLE:

**LANDSCAPE PLAN - LEVEL 2**

DATE:	20.OCT.13	DRAWING NUMBER:	
SCALE:	1/8"=1'-0"		
DRAWN:	MM		
DESIGN:	MM		
CHK'D:	PCM		



**L2**

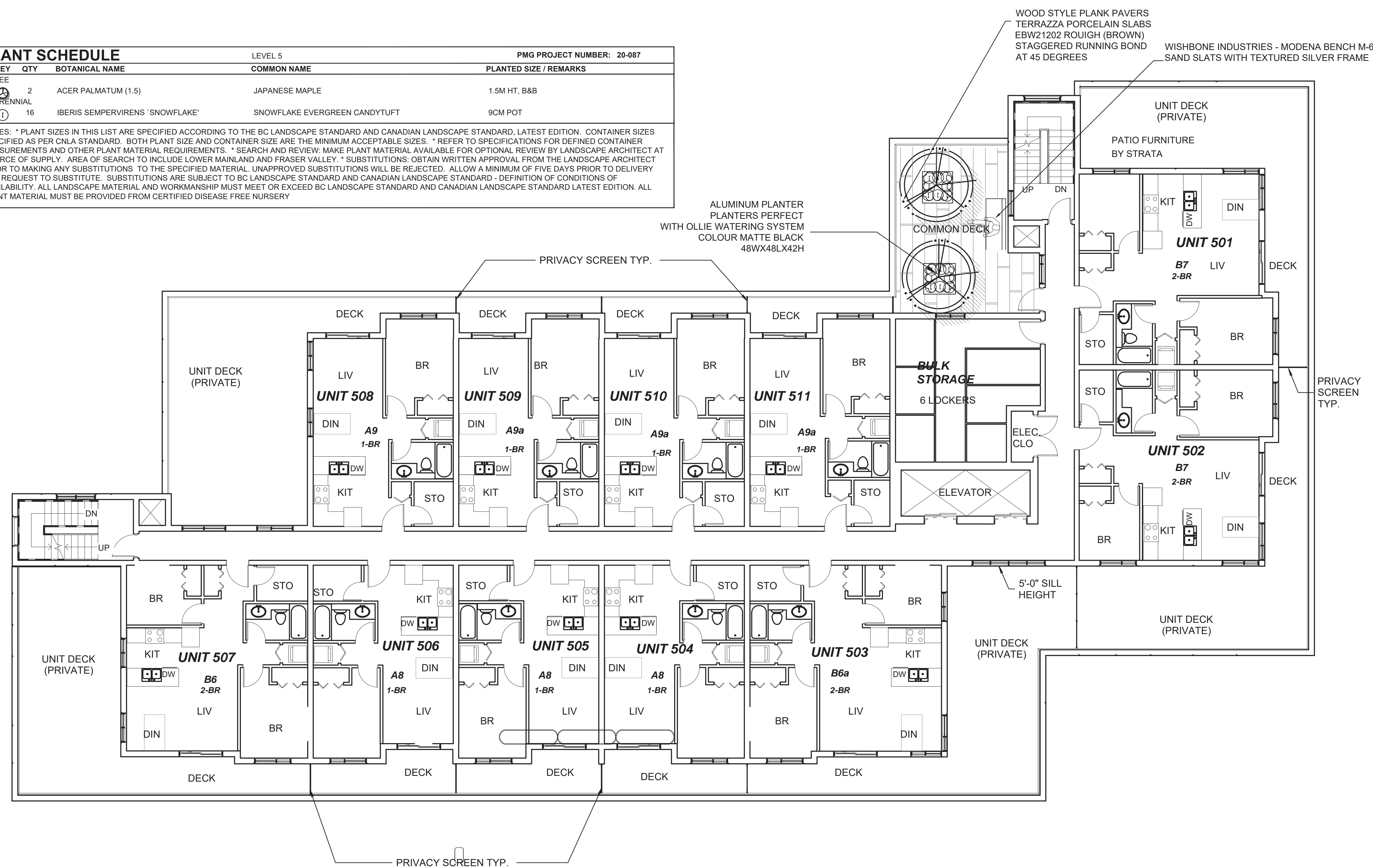
OF 4

SEAL:



PLANT SCHEDULE		LEVEL 5	PMG PROJECT NUMBER: 20-087	
KEY	QTY	BOTANICAL NAME	COMMON NAME	PLANTED SIZE / REMARKS
TREE				
⊗	2	ACER PALMATUM (1.5)	JAPANESE MAPLE	1.5M HT, B&B
Ⓜ	16	IBERIS SEMPERVIRENS 'SNOWFLAKE'	SNOWFLAKE EVERGREEN CANDYTUFT	9CM POT

NOTES: \* PLANT SIZES IN THIS LIST ARE SPECIFIED ACCORDING TO THE BC LANDSCAPE STANDARD AND CANADIAN LANDSCAPE STANDARD, LATEST EDITION. CONTAINER SIZES SPECIFIED AS PER CNLA STANDARD. BOTH PLANT SIZE AND CONTAINER SIZE ARE THE MINIMUM ACCEPTABLE SIZES. \* REFER TO SPECIFICATIONS FOR DEFINED CONTAINER MEASUREMENTS AND OTHER PLANT MATERIAL REQUIREMENTS. \* SEARCH AND REVIEW: MAKE PLANT MATERIAL AVAILABLE FOR OPTIONAL REVIEW BY LANDSCAPE ARCHITECT AT SOURCE OF SUPPLY. AREA OF SEARCH TO INCLUDE LOWER MAINLAND AND FRASER VALLEY. \* SUBSTITUTIONS: OBTAIN WRITTEN APPROVAL FROM THE LANDSCAPE ARCHITECT PRIOR TO MAKING ANY SUBSTITUTIONS TO THE SPECIFIED MATERIAL. UNAPPROVED SUBSTITUTIONS WILL BE REJECTED. ALLOW A MINIMUM OF FIVE DAYS PRIOR TO DELIVERY FOR REQUEST TO SUBSTITUTE. SUBSTITUTIONS ARE SUBJECT TO BC LANDSCAPE STANDARD AND CANADIAN LANDSCAPE STANDARD - DEFINITION OF CONDITIONS OF AVAILABILITY. ALL LANDSCAPE MATERIAL AND WORKMANSHIP MUST MEET OR EXCEED BC LANDSCAPE STANDARD AND CANADIAN LANDSCAPE STANDARD LATEST EDITION. ALL PLANT MATERIAL MUST BE PROVIDED FROM CERTIFIED DISEASE FREE NURSERY



NO.	DATE	REVISION DESCRIPTION	DR.
1	21.JAN.21	UPDATED SECOND FLOOR	MM

CLIENT:

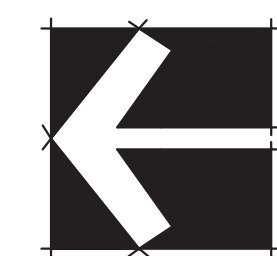
PROJECT:  
**PROPOSED RESIDENTIAL DEVELOPMENT**

5394-5402 207 STREET  
CITY OF LANGLEY, B.C.

DRAWING TITLE:  
**LANDSCAPE PLAN - LEVEL 5**

DATE: 20.OCT.13 DRAWING NUMBER:  
SCALE: 1/8"=1'-0"  
DRAWN: MM  
DESIGN: MM  
CHK'D: PCM

**L3**  
OF 4

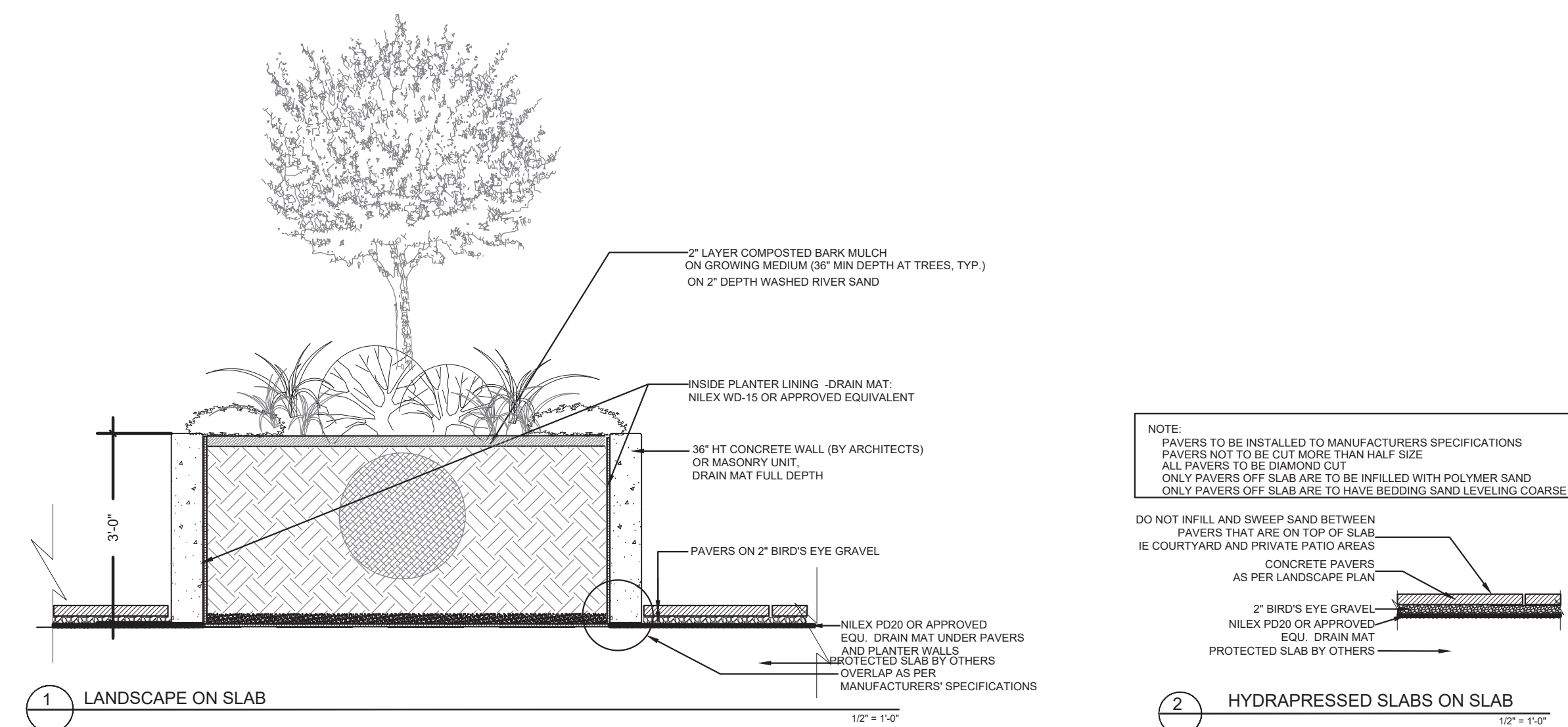
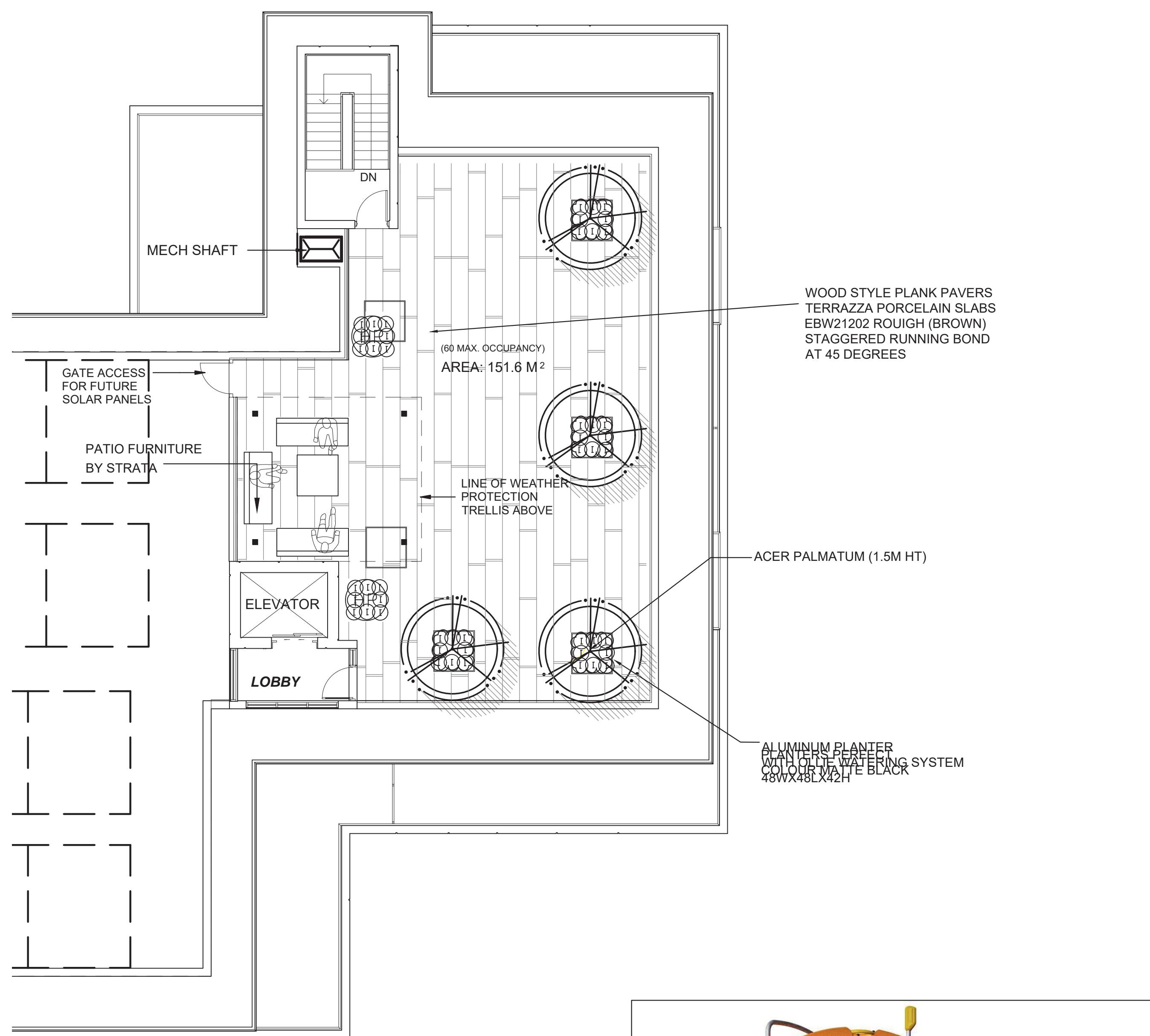


SEAL:



PLANT SCHEDULE				ROOF	PMG PROJECT NUMBER: 20-087
KEY	QTY	BOTANICAL NAME	COMMON NAME	PLANTED SIZE / REMARKS	
TREE					
⊕	4	ACER PALMATUM (1.5)	JAPANESE MAPLE	1.5M HT, B&B	
SHRUB					
⊕	2	HYDRANGEA PANICULATA 'LIMELIGHT'	LIMELIGHT HYDRANGEA; LIMEGREEN-PINK	#2 POT; 50CM	
PERENNIAL					
①	48	IBERIS SEMPERVIRENS 'SNOWFLAKE'	SNOWFLAKE EVERGREEN CANDYTUFT	9CM POT	

NOTES: \* PLANT SIZES IN THIS LIST ARE SPECIFIED ACCORDING TO THE BC LANDSCAPE STANDARD AND CANADIAN LANDSCAPE STANDARD, LATEST EDITION. CONTAINER SIZES SPECIFIED AS PER CNLA STANDARD. BOTH PLANT SIZE AND CONTAINER SIZE ARE THE MINIMUM ACCEPTABLE SIZES. \* REFER TO SPECIFICATIONS FOR DEFINED CONTAINER MEASUREMENTS AND OTHER PLANT MATERIAL REQUIREMENTS. \* SEARCH AND REVIEW: MAKE PLANT MATERIAL AVAILABLE FOR OPTIONAL REVIEW BY LANDSCAPE ARCHITECT AT SOURCE OF SUPPLY. AREA OF SEARCH TO INCLUDE LOWER MAINLAND AND FRASER VALLEY. \* SUBSTITUTIONS: OBTAIN WRITTEN APPROVAL FROM THE LANDSCAPE ARCHITECT PRIOR TO MAKING ANY SUBSTITUTIONS TO THE SPECIFIED MATERIAL. UNAPPROVED SUBSTITUTIONS WILL BE REJECTED. ALLOW A MINIMUM OF FIVE DAYS PRIOR TO DELIVERY FOR REQUEST TO SUBSTITUTE. SUBSTITUTIONS ARE SUBJECT TO BC LANDSCAPE STANDARD AND CANADIAN LANDSCAPE STANDARD - DEFINITION OF CONDITIONS OF AVAILABILITY. ALL LANDSCAPE MATERIAL AND WORKMANSHIP MUST MEET OR EXCEED BC LANDSCAPE STANDARD AND CANADIAN LANDSCAPE STANDARD LATEST EDITION. ALL PLANT MATERIAL MUST BE PROVIDED FROM CERTIFIED DISEASE FREE NURSERY



KOMPAN TODDLER PCE1000-100-PLAY PIECE ON RUBBER TILES



TERRAZZA PORCELAIN SLABS - EBW21202 ROUGH (BROWN), RUNNING BOND



WISHBONE INDUSTRIES - MODENA BENCH M-6 SAND SLATS WITH TEXTURED SILVER FRAME

NO.	DATE	REVISION DESCRIPTION	DR.
2	21.MR.01	UPDATED ROOF PLAN	MM
1	21.JAN.21	UPDATED SECOND FLOOR	MM

CLIENT:

PROJECT:  
**PROPOSED RESIDENTIAL DEVELOPMENT**  
5394-5402 207 STREET  
CITY OF LANGLEY, B.C.

DRAWING TITLE:  
**LANDSCAPE ROOF PLAN**

DATE: 20.OCT.13 DRAWING NUMBER:  
SCALE: 1/8"=1'-0"  
DRAWN: MM **L4**  
DESIGN: MM  
CHK'D: PCM OF 4

